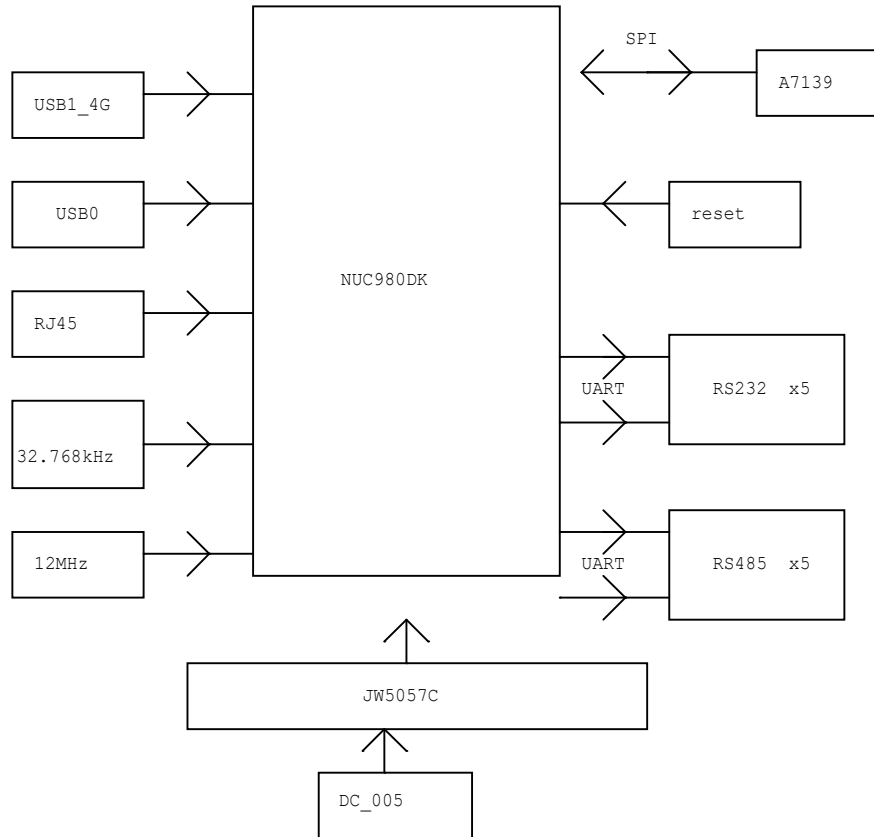



Release Note



		深圳市云联芯科技有限公司	
		ShenZhen iyunlink Technology Co.,LTD	
Design Name			
NK-980V1			
Size	Page Name		Rev
A	Block Diagram		<RevCode>
Date:	Thursday, August 26, 2021		Sheet 1 of 11

PIN	FUNCTION
PA0	I2C0_SDA
PA1	I2C0_SCL
PA2	I2S_LRCK
PA3	I2S_BCLK
PA4	I2S_DI
PA5	I2S_DO
PA6	I2S_MCLK
PA7	EBI_nWE
PA8	EBI_nRE
PA9	EBI_nCS0
PA10	EBI_ADDR10 (LCD_RS)
PA11	EBI_ADDR9 (LCD_RESET)
PA12	EBI_ADDR8 (LCD_BL)

PIN	FUNCTION
PB0	ADC_AIN[0]
PB1	ADC_AIN[1] UART9_TXD
PB2	ADC_AIN[2]
PB3	ADC_AIN[3] UART9_RXD
PB4	I2C1_SCL ADC_AIN[4] UART7_RXD
PB5	I2C2_SCL ADC_AIN[5]
PB6	I2C1_SDA ADC_AIN[6] UART7_TXD
PB7	I2C2_SDA ADC_AIN[7]
PB8	LED_Y
PB13	LED_R

PIN	FUNCTION
PC0	EBI_DATA0
PC1	EBI_DATA1
PC2	EBI_DATA2
PC3	EBI_DATA3
PC4	EBI_DATA4
PC5	EBI_DATA5
PC6	EBI_DATA6
PC7	EBI_DATA7
PC8	EBI_DATA8
PC9	EBI_DATA9
PC10	EBI_DATA10
PC11	EBI_DATA11
PC12	EBI_DATA12
PC13	EBI_DATA13
PC14	EBI_DATA14
PC15	EBI_DATA15

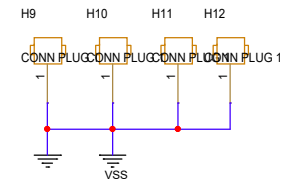
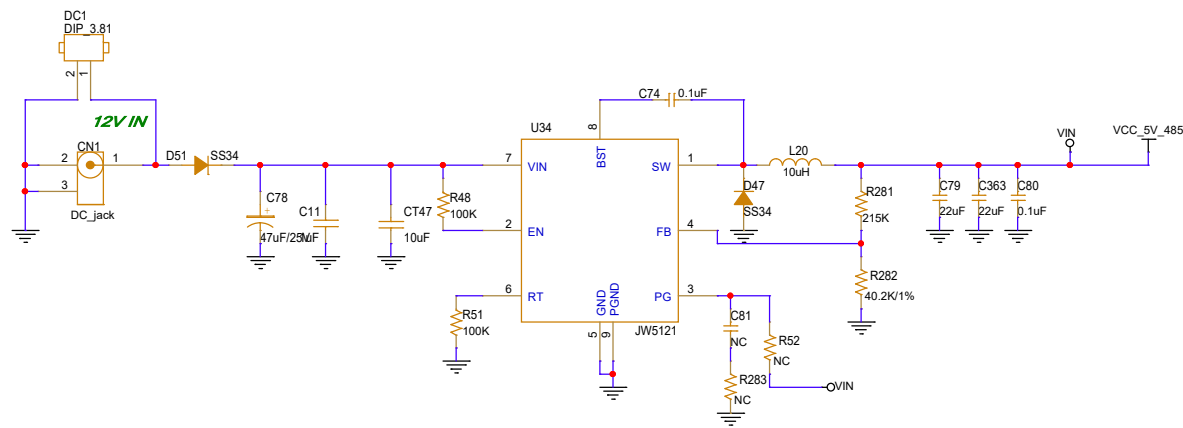
PIN	FUNCTION
PD2	QSPI0_SS0
PD3	QSPI0_CLK
PD4	QSPI0_DO
PD5	QSPI0_DI
PD6	QSPI0_D2
PD7	QSPI0_D3
PD8	SPI0_SS0
PD9	SPI0_CLK
PD10	SPI0_DO UART6_TXD
PD11	SPI0_DI UART6_RXD
PD12	UART4_TXD PWM00
PD13	UART4_RXD PWM01
PD14	I2C3_SCL PWM02
PD15	I2C3_SDA PWM03

PIN	FUNCTION
PE0	RMII0_RXERR
PE1	RMII0_CRSDV
PE2	RMII0_RXD1
PE3	RMII0_RXD0
PE4	RMII0_REFCLK
PE5	RMII0_TXEN
PE6	RMII0_TXD1
PE7	RMII0_TXD0
PE8	RMII0_MDIO
PE9	RMII0_MDC
PE10	Key1
PE11	USB0_VBUSVLD
PE12	Key2

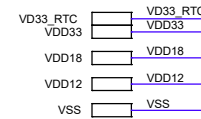
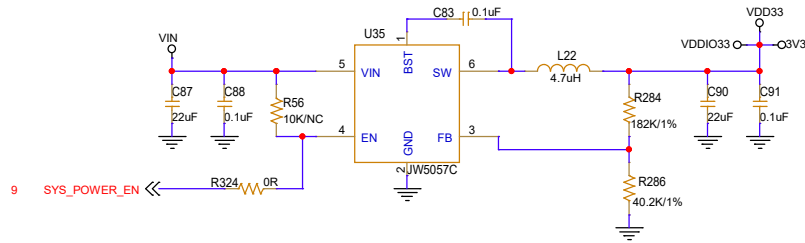
PIN	FUNCTION
PF0	SD1_CMD eMMC1_CMD
PF1	SD1_CLK eMMC1_CLK
PF2	SD1_DATA0 eMMC1_DATA0
PF3	SD1_DATA1 eMMC1_DATA1
PF4	SD1_DATA2 eMMC1_DATA2
PF5	SD1_DATA3 eMMC1_DATA3
PF6	SD1_nCD
PF7	PWM02
PF8	PWM03
PF9	UART1_RXD PWM10
PF10	UART1_TXD PWM11
PF11	UART0_RXD
PF12	UART0_TXD

PIN	FUNCTION
PG0	CFG[0]
PG1	CFG[1]
PG3	CFG[3]
PG5	CFG[5]
PG6	UART5_RXD PWM10
PG7	UART5_TXD PWM11
PG8	CFG[8]
PG9	CFG[9]
PG11	JTAG0_TDO SPI1_SS0 PWM10
PG12	JTAG0_TCK SPI1_CLK PWM11
PG13	JTAG0_TMS SPI1_DO PWM12 UART5_RXD
PG14	JTAG0_TDI SPI1_DI PWM13 UART5_TXD
PG15	JTAG0_NTRST LED_G

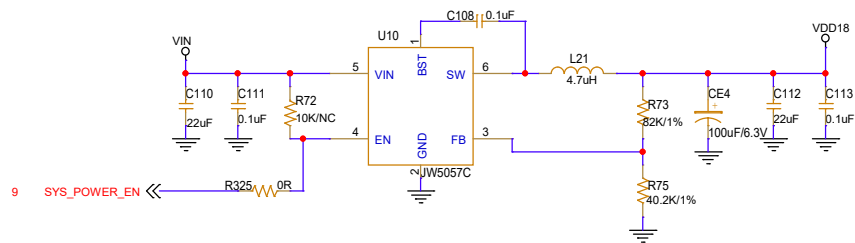
云联芯科技		深圳市云联芯科技有限公司	
ShenZhen iyunlink Technology Co.,LTD			
Design Name		NK-980V1	
Size A	Page Name	Rev <RevCode>	
	GPI0 LIST		
Date:	Thursday, August 26, 2021	Sheet	2 of 11



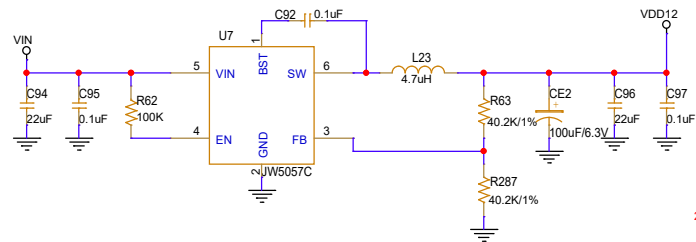
3.3V



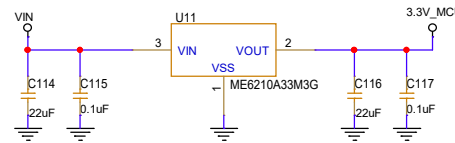
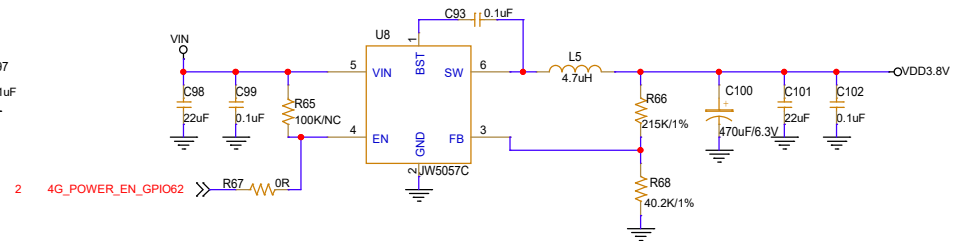
1.8V



1.2V



3.8V 4G Power



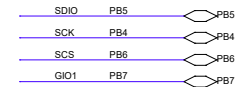
USB0_ID	1	USB0_ID
PA0	2	PA.0/QSPI0_SS1/I2C0_SDA/UART1_RXD/EINT0/TM0_ECNT/CAN3_RXD
PA1	3	PA.1/EBI_nCS2/EBI_MCLK/I2C0_SCL/UART1_TXD/EINT1/TM1_ECNT/CAN3_TXD
PA2	4	PA.2/UART6_CTS/I2S_BCLK/SC0_CDU/JTAG1_TDO/TM2_ECNT
PA3	5	PA.3/UART6_RTS/I2S_BCLK/SC0_PWR/JTAG1_TCK/TM3_ECNT
PA4	6	PA.4/UART6_RXD/I2S_D0/SC0_DAT/JTAG1_TMS/TM4_ECNT
PA5	7	PA.5/UART6_TXD/I2S_D0/SC0_CLK/JTAG1_TDI/TM5_ECNT
PA6	8	PA.6/EBI_nCS1/I2S_MCLK/SC0_RST/JTAG1_nTRST
VD33	9	VD33
VD12	10	VD12
VD18	11	VD18
VD18	12	MVDD
VD12	13	MVDD
PA7	14	PA.7/EBI_nWE/UART2_CTS/TM3_EXT
PA8	15	PA.8/EBI_nRE/UART2_RTS/TM3_TGL
PA9	16	PA.9/EBI_nCS0/UART2_RXD/TM2_EXT
PA10	17	PA.10/EBI_ADDR10/UART2_TXD/TM2_TGL
PA11	18	PA.11/EBI_ADDR9/UART8_RXD/TM4_EXT
PA12	19	PA.12/EBI_ADDR8/UART8_TXD/TM4_TGL
VD33	20	VD33
PC9	21	VD10
PG8	22	PG.8/EBI_ADDR7/UART8_CTS/PWM13/CFG.9_PwrOnSel9
PG7	23	PG.7/EBI_ADDR6/UART8_RTS/PWM12/CFG.9_PwrOnSel8
PG6	24	PG.6/EBI_ADDR5/UART5_TXD/PWM11/CFG.7_PwrOnSel7
PG5	25	PG.5/EBI_ADDR4/UART5_RXD/PWM10/CFG.6_PwrOnSel6
PG3	26	PG.3/EBI_ADDR12/UART5_RTS/CFG.5_PwrOnSel5
PG1	27	PG.1/EBI_ADDR3/UART2_RTS/PWM0/CFG.3_PwrOnSel3
PG0	28	PG.0/EBI_ADDR1/UART2_TXD/PWM0/CFG.1_PwrOnSel1
PB6	29	PB.6/EBI_ADDR0/UART2_RXD/CLK_OUT/PWM0/CFG.0_PwrOnSel0
PB4	30	PB.4/EBI_ADDR14/I2C1_SCL/I2S_BCLK/USBH0_DP/UART7_RXD/SPI1_CLK/ADC_AIN4
VD33_ADC	32	AVDDADC
VD33_ADC	33	AVDDADC
PB7	34	PB.7/EBI_ADDR15/I2C2_SDA/I2S_D0/USBH0_DM/UART7_CTS/SPI1_MOSI/ADC_AIN7
PB5	35	PB.5/EBI_ADDR16/I2C2_SCL/I2S_D0/USBH0_DP/UART7_RTS/SPI1_MISO/ADC_AIN5
PB1	36	PB.1/EBI_ADDR17/I2C3_SDA/I2S_MCLK/CAN2_RXD/TM0_EXT/SPI1_SS1/UART9_TXD/ADC_AIN1
PB3	37	PB.3/EBI_ADDR18/I2C3_SCL/EINT2/CAN2_TXD/TM0_TGL/SPI0_SS1/UART9_RXD/ADC_AIN3
PB2	38	PB.2/EBI_ADDR2/UART9_RTS/ADC_AIN2
VD33_RTC	39	VBAT33
32K_IN	40	32K_IN
PB8	42	X32_OUT
VD12	43	PB.8/EBI_ADDR11/I2C2_SCL/CAN2_RXD/UART8_TXD/S0_nCD/TM0_EXT
PC0	44	VDD
PC1	45	PC.0/EBI_DATA0/I2C2_SDA/CAN2_TXD/UART8_RXD/SPI0_SS1/TM0_TGL
PC2	46	PC.2/EBI_DATA1/INAND_nCS0/UART7_TXD
PC3	47	PC.3/EBI_DATA2/INAND_nWP/UART7_RXD
PC4	48	PC.4/EBI_DATA3/CAPO_CLK/INAND_ALE/I2C1_SCL/UART3_TXD/CAN0_RXD
PC5	49	PC.5/EBI_DATA4/CAPO_PCLK/INAND_CLE/I2C1_SCL/UART3_RXD/SPI0_MOSI/CAN0_TXD
PC6	50	PC.6/EBI_DATA5/CAPO_HSYN/CAN0_nWE/SPI0_SS0/S0_CMD/UART1_TXD/EMMC0_CMD
PC7	51	PC.7/EBI_DATA6/CAPO_VSYN/CAN0_nRE/SC1_RST/SPI0_CLK/S0_CMD/CLK/UART1_RXD/EMMC0_CLK
PC8	52	PC.8/EBI_DATA7/CAPO_FIELD/INAND_RDY/SC1_CLK/SPI0_MISO/S0_DATA0/UART1_RTS/EMMC0_DATA0
PC9	53	PC.9/EBI_DATA8/CAPO_DATA0/INAND_DATA0/SC1_DAT/SPI0_MISO/S0_DATA1/UART1_CTS/EMMC0_DATA0
PC10	54	PC.10/EBI_DATA9/CAPO_DATA1/INAND_DATA1/SC1_PWR/SC0_DATA2/UART4_TXD/EMMC0_DATA2
PC11	55	PC.11/EBI_DATA10/CAPO_DATA2/INAND_DATA2/SC1_CD/S0_DATA3/UART4_RXD/EMMC0_DATA3
PC12	56	PC.12/EBI_DATA11/CAPO_DATA3/INAND_DATA3/SC1_RST
PC13	57	PC.13/EBI_DATA12/CAPO_DATA4/INAND_DATA4/SC0_CLK/S0_nCD/UART8_TXD
PC14	58	PC.14/EBI_DATA13/CAPO_DATA5/INAND_DATA5/SC0_DAT/UART8_RXD
PC15	59	PC.15/EBI_DATA14/CAPO_DATA6/INAND_DATA6/SC0_PWR/SPI0_MOSI/UART8_RTS
VD33	60	PC.15/EBI_DATA15/CAPO_DATA7/INAND_DATA7/SC0_CDU/UART8_CTS
PD2	61	VD10
PD3	62	PD.2/QSPI0_SS0/UART3_TXD/TM4_EXT
PD4	63	PD.3/QSPI0_CLK/UART3_RXD/TM4_TGL
VSS	64	PD.4/QSPI0_MOSI/UART3_RTS/TM5_EXT
VSS	64	VSS

NUC980DK

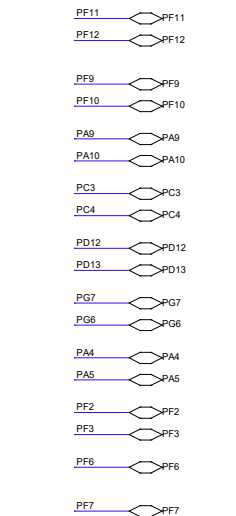
128	VSS
127	USB0_REXT
126	VD33
125	USB0_DP
124	USB0_DM
123	VD12
122	USB1_REXT
121	VD33
120	USB1_DP
119	USB1_DM
118	VD12
117	PE12
116	PE11
115	PE10
114	PE9
113	PE8
112	PE7
110	PE5
108	PE3
107	PE2
106	PE1
105	PE0
104	12M_OUT
103	12M_IN
102	VD33
101	XT_IN
100	PF.12/UART0_TXD
99	PF.11/UART0_RXD
98	PF.10
97	PF.8
96	PF.7
95	VSS
94	VD12
93	PB13
92	PF.6
91	PF.5
90	PF.4
89	PF.3
88	PF.2
87	PF.1
86	PF.0
85	VD33
84	VD18
83	VD18
82	VD12
81	nRST
80	PG15
79	PG14
78	PG13
77	PG12
76	PG11
75	PD15
74	PD14
73	PD13
72	PD12
71	PD11
70	PD10
68	PD9
68	PD8
67	PD7
66	PD6
65	PD5

128	VSS
127	USB0_REXT
126	VD33
125	USB0_DP
124	USB0_DM
123	VD12
122	USB1_REXT
121	VD33
120	USB1_DP
119	USB1_DM
118	VD12
117	PE12
116	PE11
115	PE10
114	PE9
113	PE8
112	PE7
110	PE5
108	PE3
107	PE2
106	PE1
105	PE0
104	12M_OUT
103	12M_IN
102	VD33
101	XT_IN
100	PF.12/UART0_TXD
99	PF.11/UART0_RXD
98	PF.10
97	PF.8
96	PF.7
95	VSS
94	VD12
93	PB13
92	PF.6
91	PF.5
90	PF.4
89	PF.3
88	PF.2
87	PF.1
86	PF.0
85	VD33
84	VD18
83	VD18
82	VD12
81	nRST
80	PG15
79	PG14
78	PG13
77	PG12
76	PG11
75	PD15
74	PD14
73	PD13
72	PD12
71	PD11
70	PD10
68	PD9
68	PD8
67	PD7
66	PD6
65	PD5

SPI



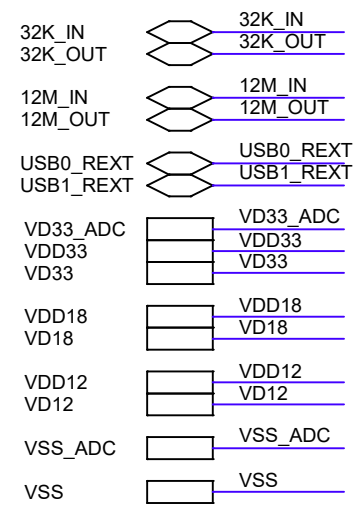
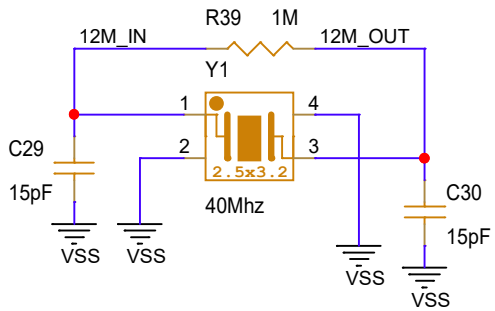
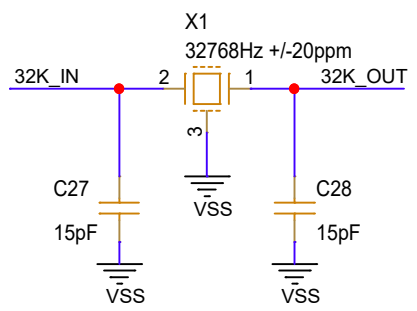
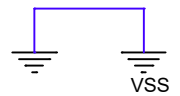
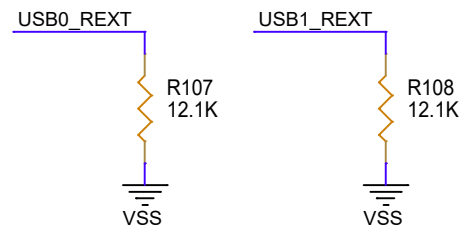
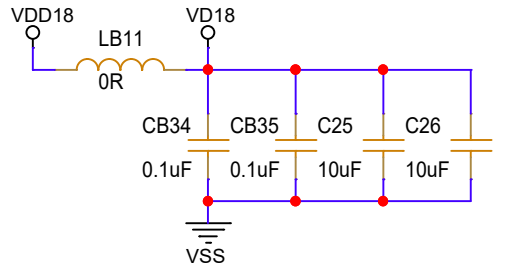
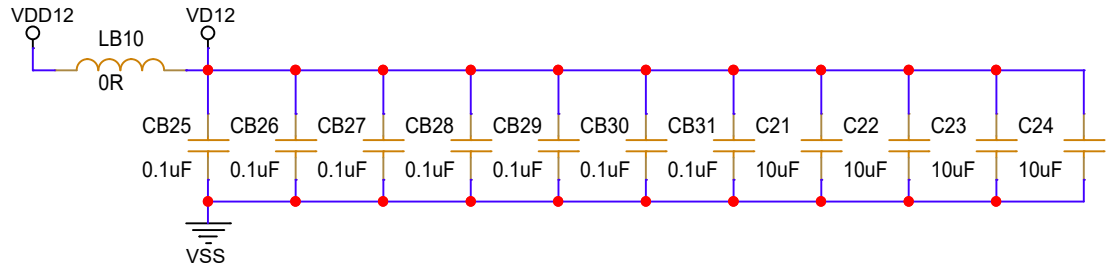
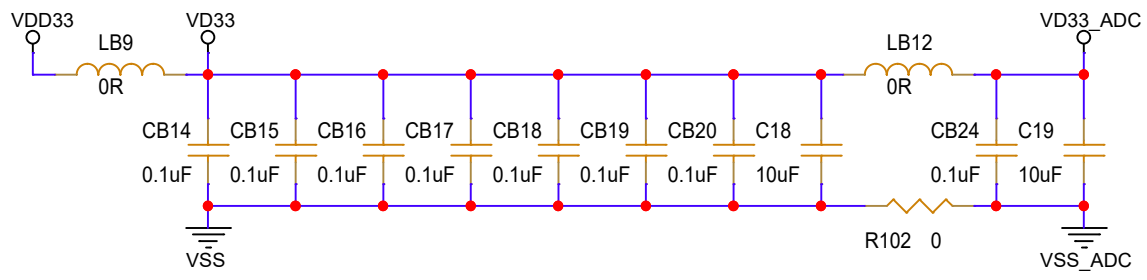
UAUT




4G_POWER_EN_GPI02
HWD_IN_GPI037 2

云联芯科技 深圳市云联芯科技有限公司
ShenZhen iyunlink Technology Co.,LTD

Design Name: NUC980V1
Size: Custom Page Name: NUC980DK Rev: <RevCode>
Date: Saturday, August 28, 2021 Sheet: 4 of 11




深圳市云联芯科技有限公司
ShenZhen iyunlink Technology Co.,LTD

Design Name		NK-980V1	
Size A	Page Name	Power Filter	Rev <RevCode>
Date:	Friday, August 27, 2021	Sheet	5 of 11

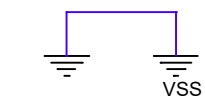
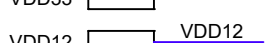
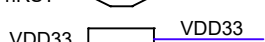
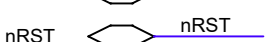
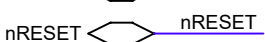
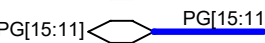
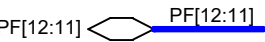
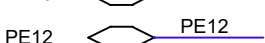
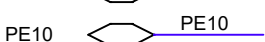
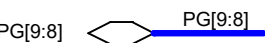
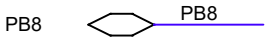
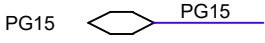
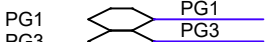
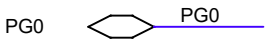
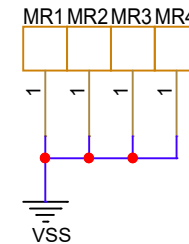
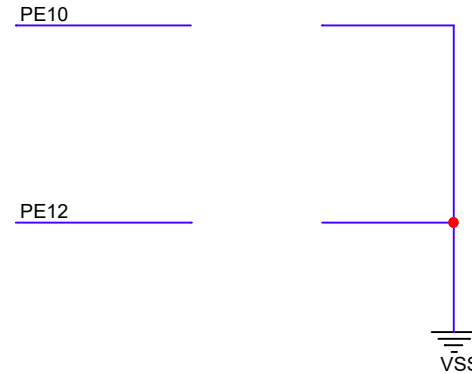
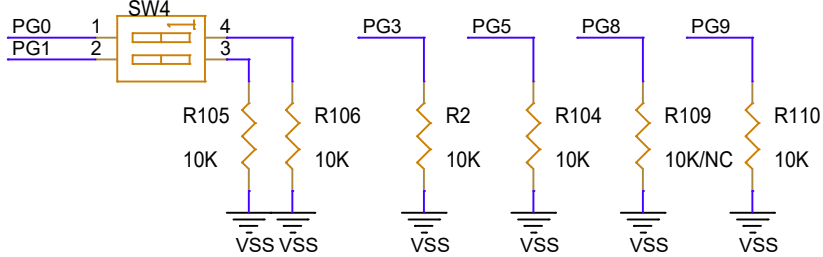
PG1	PG0	Booting from
ON(0)	ON(0)	USB
ON(0)	OFF(1)	SD/eMMC
OFF(1)	ON(0)	NAND Flash
OFF(1)	OFF(1)	QSPI Flash_0

PG3	Watch Dog
ON(0)	OFF
OFF(1)	ON

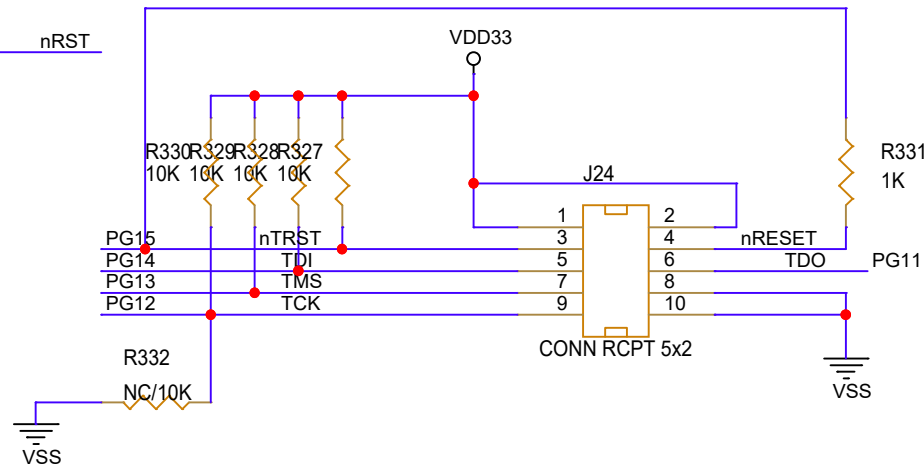
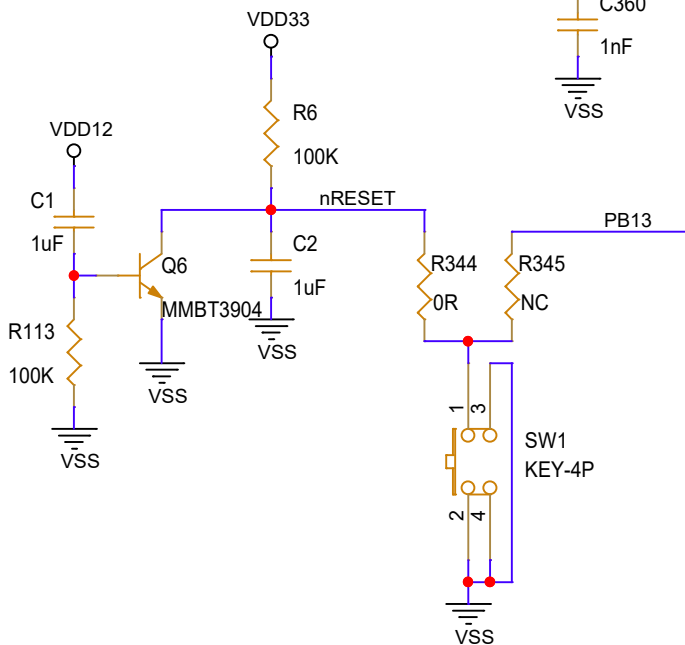
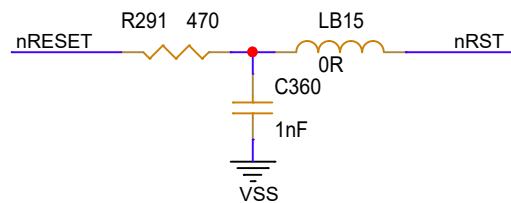
PG5	UART0 Message
ON(0)	ON
OFF(1)	OFF

PG9	PG8	QSPI Source if PG[1:0]=11
ON(0)	ON(0)	SPI-NAND, 1-bit
ON(0)	OFF(1)	SPI-NAND, 4-bit
OFF(1)	ON(0)	SPI-NOR, 4-bit
OFF(1)	OFF(1)	SPI-NOR, 1-bit

Power On Setting



LED4 LED5



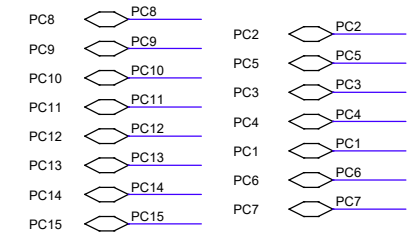
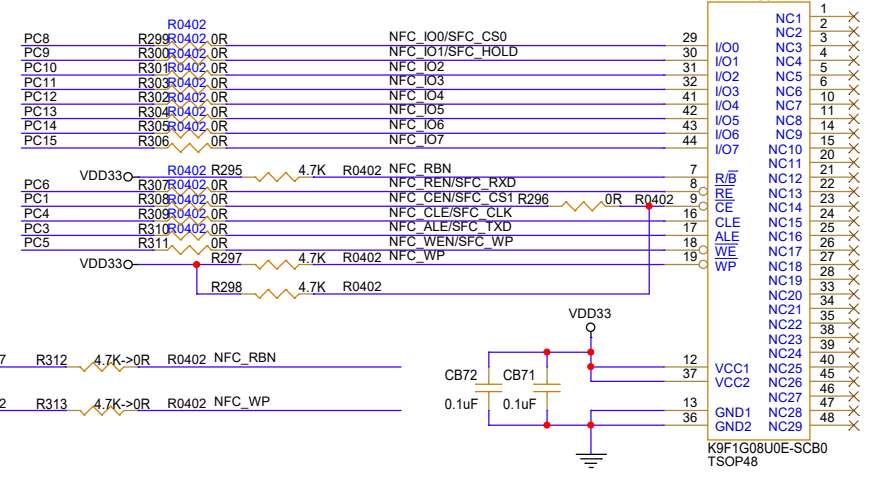
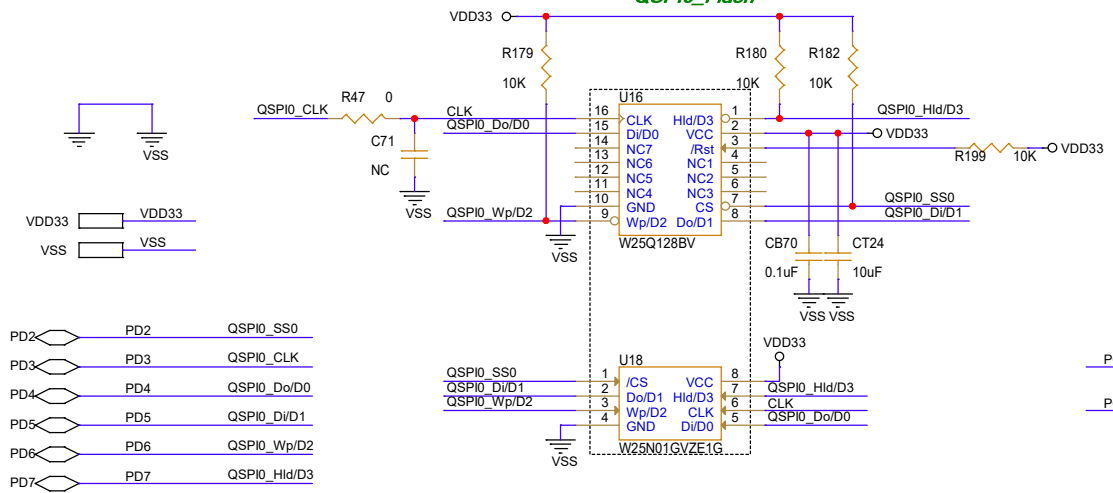
云联芯科技

深圳市云联芯科技有限公司

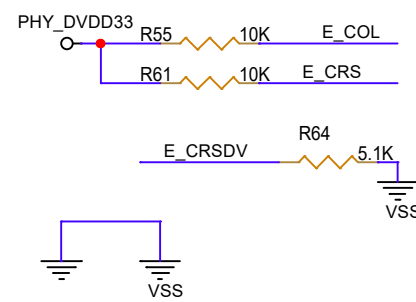
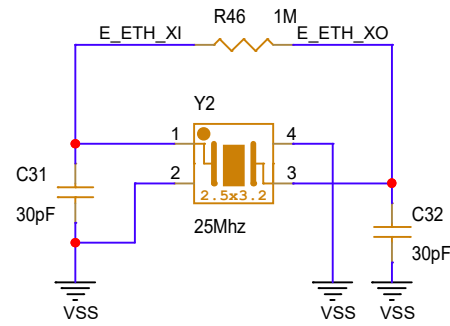
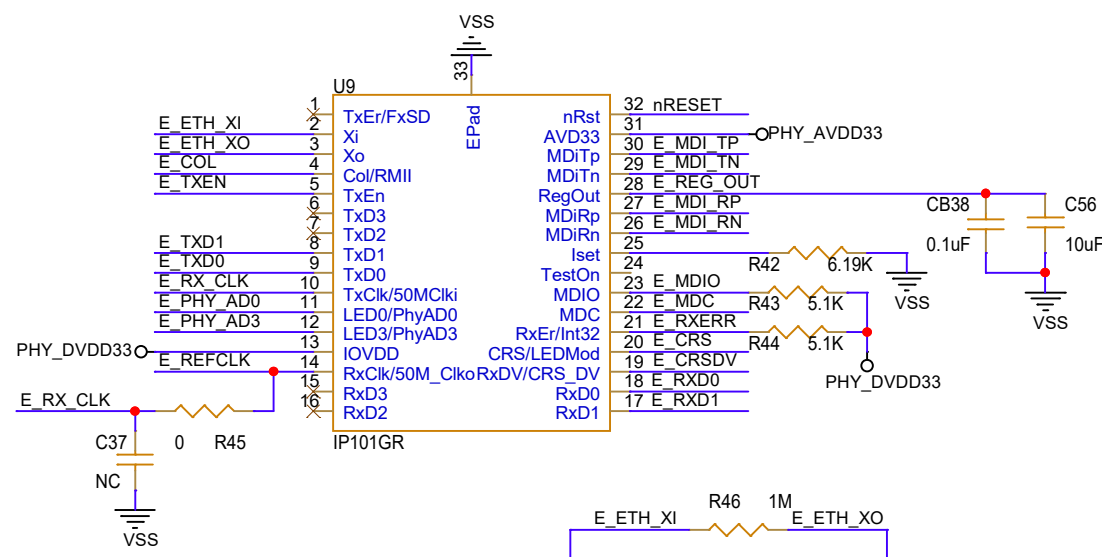
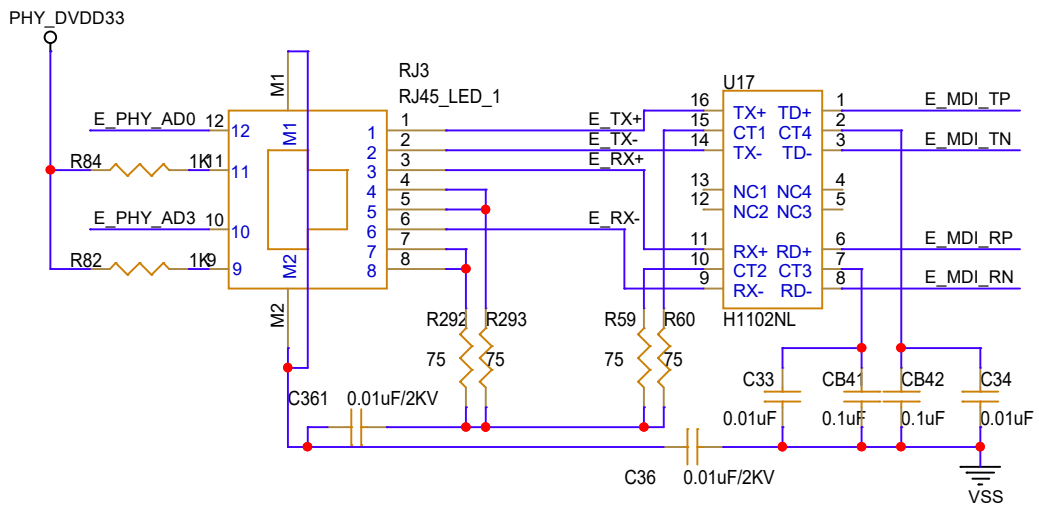
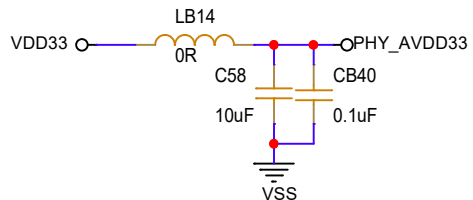
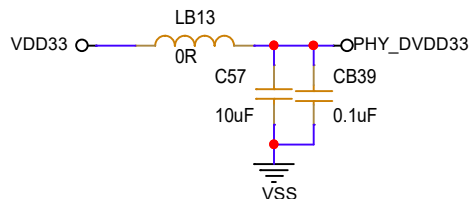
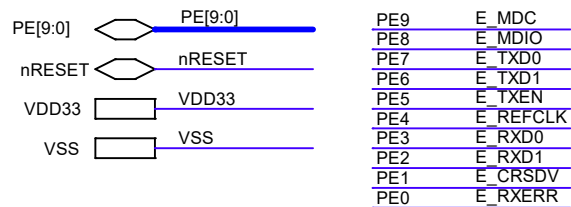
Shenzhen iyunlink Technology Co.,LTD

Design Name		NK-980V1	
Size A	Page Name	Configure	Rev <RevCode>
Date:	Tuesday, August 31, 2021	Sheet	6 of 11

QSPI0_Flash

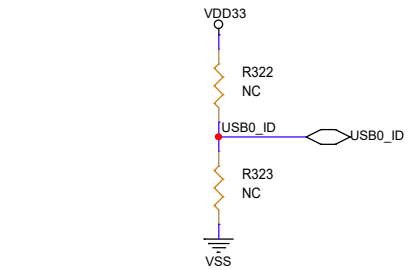
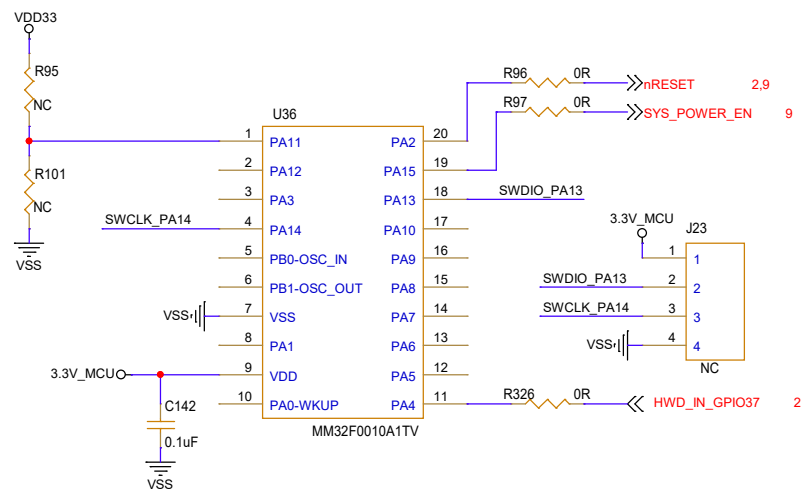
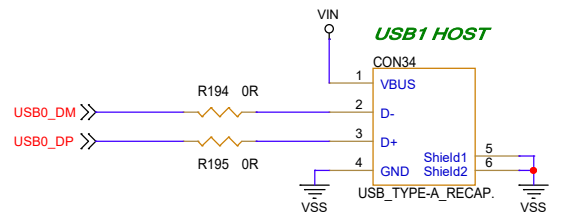
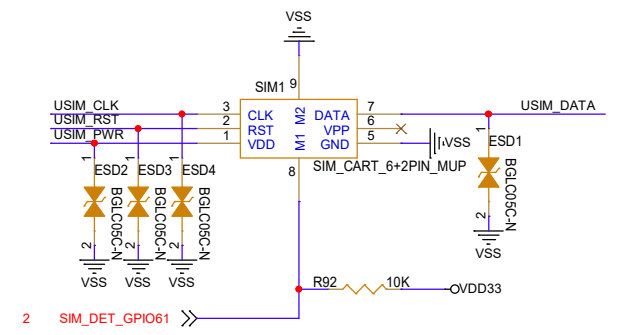
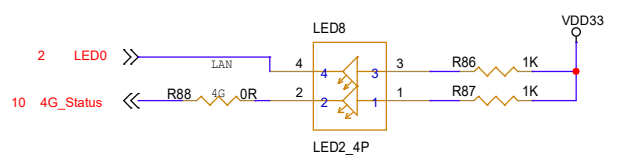
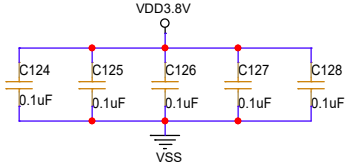
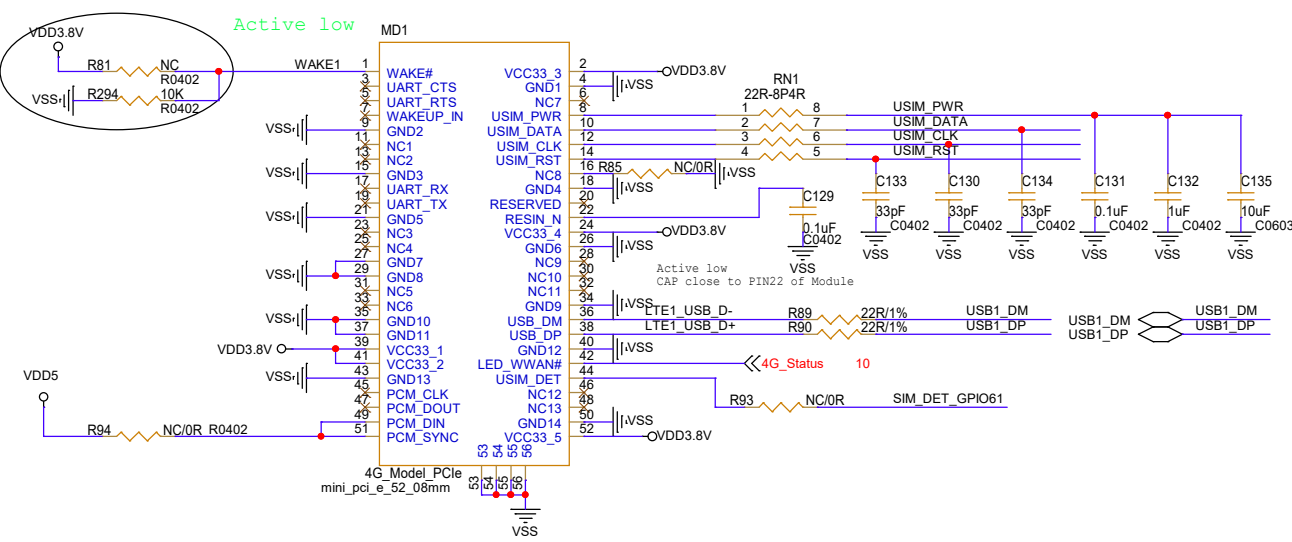


云联芯科技		深圳市云联芯科技有限公司	
ShenZhen iyunlink Technology Co.,LTD			
Design Name		NK-980V1	
Size B	Page Name	SPI Nand Flash	Rev <RevCode>
Date:	Friday, August 27, 2021	Sheet	7 of 11



云联芯科技 **深圳市云联芯科技有限公司**
ShenZhen iyunlink Technology Co.,LTD

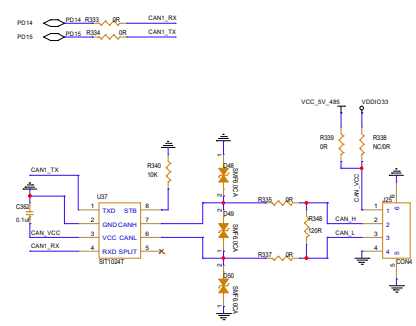
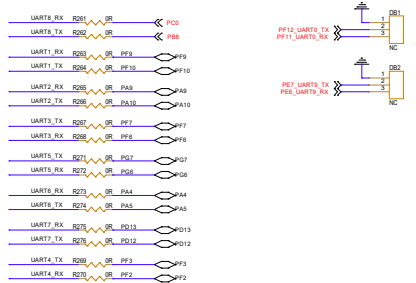
Design Name		NK-980V1	
Size	Page Name	Rev	
Custom	RMII_PE	<RevCode>	
Date:	Thursday, October 07, 2021	Sheet	8 of 11



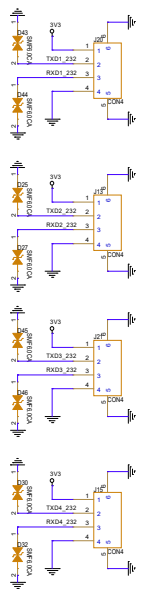
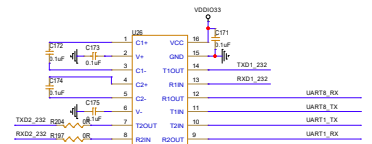
云联芯科技 **深圳市云联芯科技有限公司**
ShenZhen iyunlink Technology Co.,LTD

Design Name	NK-980V1	
Size	Page Name	Rev
B	USB4G	<RevCode>
Date:	Thursday, September 02, 2021	Sheet 9 of 11

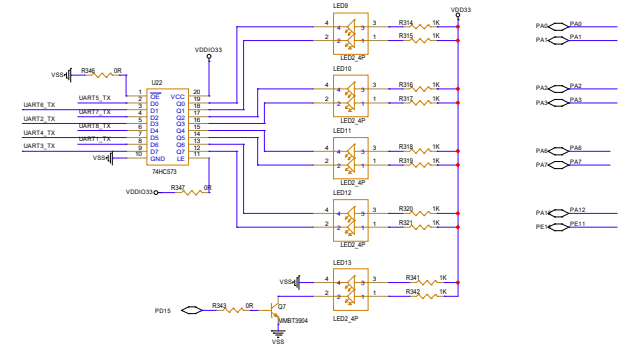
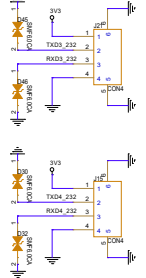
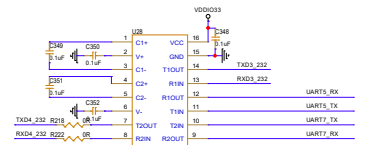
UAUT



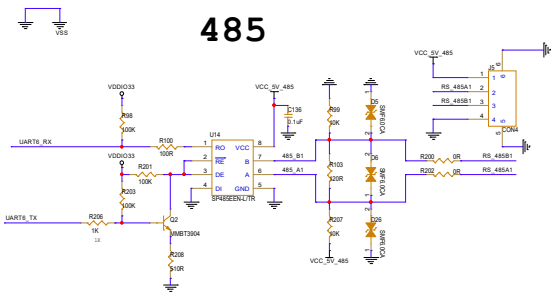
232



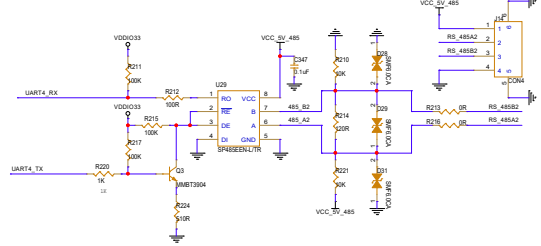
232



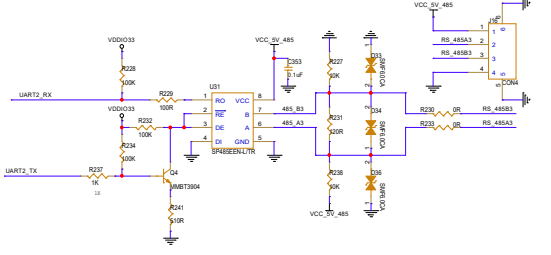
485



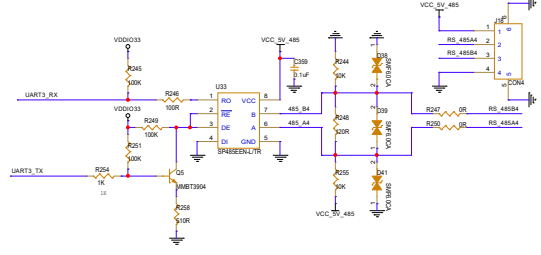
485

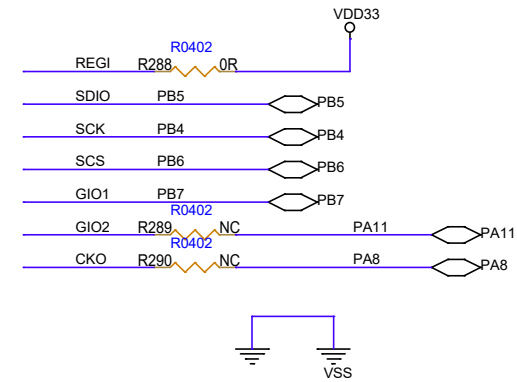
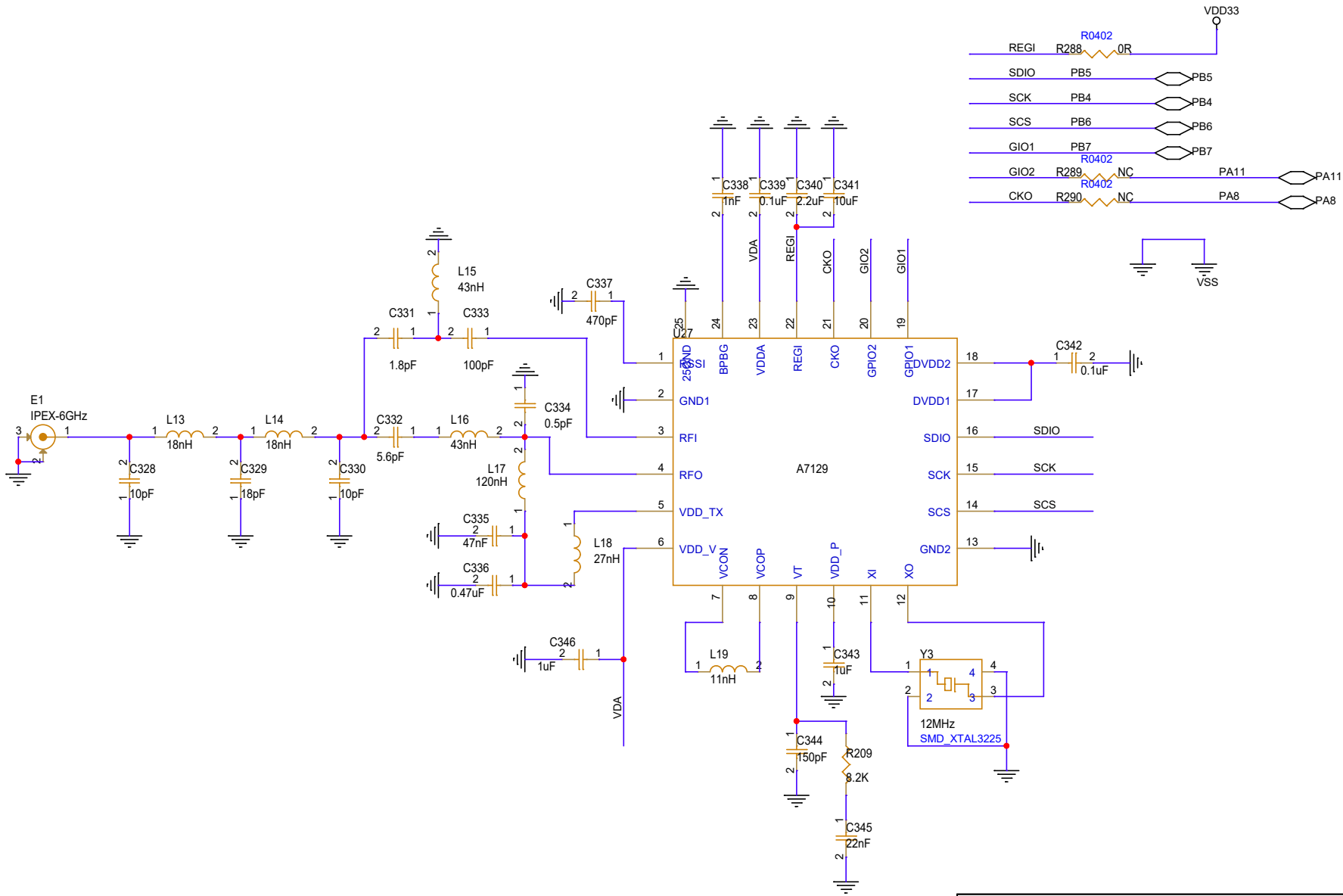


485



485





云联芯科技 **深圳市云联芯科技有限公司**
ShenZhen iyunlink Technology Co.,LTD

Design Name		NK-980V1
Size	Page Name	Rev
Custom	A7139	<RevCode>
Date:	Thursday, August 26, 2021	Sheet 11 of 11