

List of Intel Atom processors

Intel Atom is Intel's line of low-power, low-cost and low-performance x86 and x86-64 microprocessors. Atom, with codenames of *Silverthorne* and *Diamondville*, was first announced on March 2, 2008.

For nettop and netbook Atom microprocessors after *Diamondville*, the memory and graphics controller are moved from the northbridge to the CPU. This explains the drastically increased transistor count for post-*Diamondville* Atom microprocessors.

Nettop processors (small desktop)

Bonnell microarchitecture

"Diamondville" (45 nm)

- All models support: MMX, SSE, SSE2, SSE3, SSSE3, Intel 64, XD bit (an NX bit implementation), Hyper-Threading
- Transistors: 47 million
- Die size: 25.96 mm² (3.27 × 7.94)
- Package size: 22 mm × 22 mm

Model	sSpec number	Cores	Clock rate	L2 cache	FSB	Mult.	Voltage	TDP	Socket	Release date	Part number(s)	Release price (USD)
Atom 230 (https://ark.intel.com/content/www/us/en/ark/products/35635.html)	SLB6Z (C0)	1	1.6 GHz	512 KB	533 MT/s	12×	0.9–1.1625 V	4 W	BGA 437	June 3, 2008	AU80586RE025D	\$29
Atom 330 (https://ark.intel.com/content/www/us/en/ark/products/35641.html)	SLG9Y (C0)	2	1.6 GHz	2 × 512 KB	533 MT/s	12×	0.9–1.1625 V	8 W	BGA 437	June 3, 2008	AU80587RE0251M	\$43

"Pineview" (45 nm)

- All models support: MMX, SSE, SSE2, SSE3, SSSE3, Intel 64, XD bit (an NX bit implementation), Hyper-Threading
- Integrated GMA 3150 GPU and DDR3/DDR2 single-channel memory controller^[1]
- Transistors: 123 million (single-core), 176 million (dual-core)
- Die size: 66 mm² (9.56 × 6.89) (single-core), 87 mm² (9.56 × 9.06) (dual core)
- Package size: 22 mm × 22 mm

Model	sSpec number	Cores	Clock rate	GPU frequency	L2 cache	I/O bus	Memory	Voltage	TDP	Socket	Release date	Part number(s)	Release price (USD)
Atom D410 (https://ark.intel.com/content/www/us/en/ark/products/43517.html)	SLBMH (A0)	1	1.67 GHz	400 MHz	512 KB	DMI	1 × DDR2-800	0.8–1.175 V	10 W	FC-BGA 559	January 4, 2010	AU80610004671AA	\$43
Atom D425 (https://ark.intel.com/content/www/us/en/ark/products/49489.html)	SLBX D (A0)	1	1.83 GHz	400 MHz	512 KB	DMI	1 × DDR2-800 1 × DDR3-800	0.8–1.175 V	10 W	FC-BGA 559	June 21, 2010	AU80610006252AA	\$42
Atom D510 (https://ark.intel.com/content/www/us/en/ark/products/43098.html)	SLBLA (B0)	2	1.67 GHz	400 MHz	2 × 512 KB	DMI	1 × DDR2-800	0.8–1.175 V	13 W	FC-BGA 559	December 21, 2009	AU80610004392AA	\$63
Atom D525 (https://ark.intel.com/content/www/us/en/ark/products/49490.html)	SLBXC (B0)	2	1.83 GHz	400 MHz	2 × 512 KB	DMI	1 × DDR2-800 1 × DDR3-800	0.8–1.175 V	13 W	FC-BGA 559	June 21, 2010	AU80610006225AA	\$63

Saltwell microarchitecture

"Cedarview" (32 nm)

- All models support: MMX, SSE, SSE2, SSE3, SSSE3, Intel 64, XD bit (an NX bit implementation), Hyper-Threading (except D2500)
- Integrated PowerVR SGX545-based Intel GMA 3600/GMA 3650 GPU and DDR3 single-channel memory controller^[2]
- Package size: 22 mm × 22 mm

Model	sSpec number	Cores	Clock rate	GPU frequency	L2 cache	I/O bus	Memory	Voltage	TDP	Socket	Release date	Part number(s)	Release price (USD)
Atom D2500 (http://ark.intel.com/content/www/us/en/ark/products/59682.html)	SR0D8 (B2) SR0W0 (B3)	2	1.87 GHz	400 MHz	2 × 512 KB	DMI	1 × DDR3-800 1 × DDR3-1066	0.91–1.21 V	10 W	FC-BGA 559	November, 2011	DF8064101055400	\$42
Atom D2550 (http://ark.intel.com/content/www/us/en/ark/products/65470.html)	SR0QB (B2) SR0VY (B3)	2	1.87 GHz	640 MHz	2 × 512 KB	DMI	1 × DDR3-800 1 × DDR3-1066	0.91–1.21 V	10 W	FC-BGA 559	March, 2012	DF8064101211300	\$47
Atom D2560 (http://ark.intel.com/content/www/us/en/ark/products/69362.html)	SR0QD (B2) SR0W4 (B3)	2	2 GHz	640 MHz	2 × 512 KB	DMI	1 × DDR3-800 1 × DDR3-1066	0.91–1.21 V	10 W	FC-BGA 559	October, 2012	DF8064101213700	\$47
Atom D2700 (http://ark.intel.com/content/www/us/en/ark/products/59683.html)	SR0D9 (B2)	2	2.13 GHz	640 MHz	2 × 512 KB	DMI	1 × DDR3-800 1 × DDR3-1066	0.91–1.21 V	10 W	FC-BGA 559	November, 2011	DF8064101055647	\$52
Atom D2701 ^[3]	SR0W6	2	2.13 GHz	640 MHz	2 × 512 KB		2 × DDR3-800 2 × DDR3-1066		10 W			DF8064101365900	

Netbook processors (sub-notebook)

Bonnell microarchitecture

"Diamondville" (45 nm)

- All models support: MMX, SSE, SSE2, SSE3, SSSE3, Enhanced Intel SpeedStep Technology (EIST), XD bit (an NX bit implementation), Hyper-Threading
- Transistors: 47 million
- Die size: 26 mm²
- Package size: 22 mm × 22 mm

Model	sSpec number	Cores	Clock rate	L2 cache	FSB	Mult.	Voltage	TDP	Socket	Release date	Part number(s)	Release price (USD)
Atom N270 (https://ark.intel.com/content/www/us/en/ark/products/36331.html)	SLB73 (C0)	1	1.6 GHz	512 KB	533 MT/s	12×	0.9–1.1625 V	2.5 W	BGA 437	June 3, 2008	AU80586GE025D	\$44
Atom N280 (https://ark.intel.com/content/www/us/en/ark/products/41411.html)	SLGL9 (C0)	1	1.67 GHz	512 KB	667 MT/s	10×	0.9–1.1625 V	2.5 W	BGA 437	February 6, 2009	AU80586GF028D	

"Pineview" (45 nm)

- All models support: MMX, SSE, SSE2, SSE3, SSSE3, Intel 64, Enhanced Intel SpeedStep Technology (EIST), XD bit (an NX bit implementation), Hyper-Threading
- Integrated GMA 3150 GPU and DDR3/DDR2 single-channel memory controller supporting up to 2 GB^[4]
- Transistors: 123 million (single-core), 176 million (dual-core)
- Die size: 66 mm² (9.56 × 6.89) (single-core), 87 mm² (9.56 × 9.06) (dual core)
- Package size: 22 mm × 22 mm



Intel Atom N455

Model	sSpec number	Cores	Clock rate	GPU frequency	L2 cache	I/O bus	Memory	Voltage	TDP	Socket	Release date	Part number(s)	Release price (USD)
Atom N435	SLC4C (A0)	1	1.33 GHz	200 MHz	512 KB	DMI	1 × DDR2-667 1 × DDR3-800	0.8–1.175 V	5.0 W	FC-BGA 559	June 2011	AU80610007533AA	
Atom N450 (http://ark.intel.com/content/www/us/en/ark/products/42503.html)	SLBMG (A0)	1	1.67 GHz	200 MHz	512 KB	DMI	1 × DDR2-667	0.8–1.175 V	5.5 W	FC-BGA 559	December 21, 2009	AU80610004653AA	\$63
Atom N455 (http://ark.intel.com/content/www/us/en/ark/products/49491.html)	SLBX9 (A0)	1	1.67 GHz	200 MHz	512 KB	DMI	1 × DDR2-800 1 × DDR3-800	0.8–1.175 V	6.5 W	FC-BGA 559	June 1, 2010	AU80610006237AA	\$75
Atom N470 (http://ark.intel.com/content/www/us/en/ark/products/46467.html)	SLBMF (A0)	1	1.83 GHz	200 MHz	512 KB	DMI	1 × DDR2-667	0.8–1.175 V	6.5 W	FC-BGA 559	March 1, 2010	AU80610003495AA	\$75
Atom N475 (http://ark.intel.com/content/www/us/en/ark/products/49492.html)	SLBX5 (A0)	1	1.83 GHz	200 MHz	512 KB	DMI	1 × DDR2-800 1 × DDR3-800	0.8–1.175 V	6.5 W	FC-BGA 559	June 1, 2010	AU80610006240AA	\$75
Atom N550 (http://ark.intel.com/content/www/us/en/ark/products/50154.html)	SLBXF (B0)	2	1.5 GHz	200 MHz	2 × 512 KB	DMI	1 × DDR2-800 1 × DDR3-800	0.8–1.175 V	8.5 W	FC-BGA 559	August 23, 2010	AU80610006291AA	\$86
Atom N570 (http://ark.intel.com/content/www/us/en/ark/products/55637.html)	SLBXE (B0)	2	1.67 GHz	200 MHz	2 × 512 KB	DMI	1 × DDR2-800 1 × DDR3-800	0.8–1.175 V	8.5 W	FC-BGA 559	March 1, 2011	AU80610006243AA	\$86

Saltwell microarchitecture

"Cedarview" (32 nm)

- All models support: MMX, SSE, SSE2, SSE3, SSSE3, Intel 64, Enhanced Intel SpeedStep Technology (EIST), XD bit (an NX bit implementation), Hyper-Threading
- Integrated PowerVR SGX545-based Intel GMA 3600/GMA 3650 GPU and DDR3 single-channel memory controller^[2]
- Package size: 22 × 22 mm

Model	sSpec number	Cores	Clock rate	GPU frequency	L2 cache	I/O bus	Memory	Voltage	TDP	Socket	Release date	Part number(s)	Release price (USD)
Atom N2100	SR0DC (B2)	1	1.6 GHz	400 MHz	512 KB	DMI	1 × DDR3-800			FC-BGA 559		DF8064101064902	
Atom N2600 (https://ark.intel.com/content/www/us/en/ark/products/58916.html)	SR0DB (B2) SR0W2 (B3)	2	1.6 GHz	400 MHz	2 × 512 KB	DMI	1 × DDR3-800	0.91–1.21 V	3.5 W	FC-BGA 559	December, 2011	DF8064101050706	\$42
Atom N2800 (https://ark.intel.com/content/www/us/en/ark/products/58917.html)	SR0DA (B2) SR0W1 (B3)	2	1.87 GHz	640 MHz	2 × 512 KB	DMI	1 × DDR3-1066	0.91–1.21 V	6.5 W	FC-BGA 559	December, 2011	DF8064101050503	\$47

MID processors/SoCs (UMPC/Smartphone/IoT)

Bonnell microarchitecture

"Silverthorne" (45 nm)

- All models support: MMX, SSE, SSE2, SSE3, SSSE3, Enhanced Intel SpeedStep Technology (EIST), XD bit (an NX bit implementation), Hyper-Threading
- Models Z520, Z520PT, Z530, Z530P, Z540, Z550 and Z560 support Intel VT-x
- Model Z515 supports *Intel Burst Performance Technology*
- Uses the *Poulsbo* chipset.
- Transistors: 47 million
- Die size: 26 mm²
- Package size: 13 mm × 14 mm / 22 mm × 22 mm (processors ending with the *P* or *PT* sSpec number)

Model	sSpec number	Cores	Clock rate	L2 cache	FSB	Mult.	Voltage	TDP	Socket	Release date	Part number(s)	Release price (USD)
Atom Z500 (https://ark.intel.com/content/www/us/en/ark/products/35472.html)	SLB6Q (C0)	1	800 MHz	512 KB	400 MT/s	8×	0.712–1.1 V	0.65 W	BGA 441	April 2, 2008	AC80566UC800DE	\$45
Atom Z510 (https://ark.intel.com/content/www/us/en/ark/products/35469.html)	SLB2C (C0)	1	1.1 GHz	512 KB	400 MT/s	11×	0.75–1.1 V	2 W	BGA 441	April 2, 2008	AC80566UC005DE	\$45
Atom Z510P (https://ark.intel.com/content/www/us/en/ark/products/41175.html)	SLGPQ (C0)	1	1.1 GHz	512 KB	400 MT/s	11×	0.8–1.1 V	2.2 W	BGA 437	March 2, 2009	CH80566EC005DW	N/A
Atom Z510PT (https://ark.intel.com/content/www/us/en/ark/products/41176.html)	SLGPR (C0)	1	1.1 GHz	512 KB	400 MT/s	11×	0.75–1.1 V	2.2 W	BGA 437	March 2, 2009	CH80566EC005DT	N/A
Atom Z515 (https://ark.intel.com/content/www/us/en/ark/products/40740.html)	SLGMG (C0)	1	1.2 GHz	512 KB	400 MT/s	12×	0.712–1 V	1.4 W	BGA 441	April 8, 2009	AC80566UC009DV	N/A
Atom Z520 (https://ark.intel.com/content/www/us/en/ark/products/35466.html)	SLB2H (C0)	1	1.33 GHz	512 KB	533 MT/s	10×	0.75–1.1 V	2 W	BGA 441	April 2, 2008	AC80566UE014DW	\$65
Atom Z520PT (https://ark.intel.com/content/www/us/en/ark/products/41174.html)	SLGPP (C0)	1	1.33 GHz	512 KB	533 MT/s	10×	0.9–1.1 V	2.2 W	BGA 437	March 2, 2009	CH80566EE014DT	N/A
Atom Z530 (https://ark.intel.com/content/www/us/en/ark/products/35463.html)	SLB6P (C0)	1	1.6 GHz	512 KB	533 MT/s	12×	0.75–1.1 V	2 W	BGA 441	April 2, 2008	AC80566UE025DW	\$95
Atom Z530P (https://ark.intel.com/content/www/us/en/ark/products/41173.html)	SLGPN (C0)	1	1.6 GHz	512 KB	533 MT/s	12×	0.8–1.1 V	2.2 W	BGA 437	March 2, 2009	CH80566EE025DW	N/A
Atom Z540 (https://ark.intel.com/content/www/us/en/ark/products/35460.html)	SLB2M (C0)	1	1.87 GHz	512 KB	533 MT/s	14×	0.75–1.1 V	2.4 W	BGA 441	April 2, 2008	AC80566UE036DW	\$160
Atom Z550 (https://ark.intel.com/content/www/us/en/ark/products/40741.html)	SLGPT (C0)	1	2 GHz	512 KB	533 MT/s	15×	0.75–1.1 V	2.4 W	BGA 441	April 8, 2009	AC80566UE041DW	N/A
Atom Z560 (https://ark.intel.com/content/www/us/en/ark/products/49669.html)	SLH63 (C0)	1	2.13 GHz	512 KB	533 MT/s	16×	0.75–1.1 V	2.5 W	BGA 441	Q2 2010	AC80566UE046DW	\$144

"Lincroft" (45 nm)

- All models support: MMX, SSE, SSE2, SSE3, SSSE3, Enhanced Intel SpeedStep Technology (EIST), XD bit (an NX bit implementation), Hyper-Threading. All except Z605 support Intel Burst Performance Technology (BPT).
- GMA 600 GPU and DDR2 single-channel memory controller are integrated into the processor.^[5]
- Transistors: 140 million
- Die size: 7.34 mm × 8.89 mm = 65.2526 mm²
- Package size: 13.8 mm × 13.8 × 1.0 mm
- Steppings: C0

Model	sSpec number	Cores	Clock rate	GPU frequency	L2 cache	I/O bus	Memory	Voltage	TDP	Socket	Release date	Part number(s)	Release price (USD)
Atom Z600 (https://ark.intel.com/content/www/us/en/ark/products/49656.html)	SLBZP (C0) SLBR9	1	1.2 GHz	200 MHz	512 KB	DMI	1 × LPDDR-400	0.7625–1.1 V	1.3 W	FC-BGA 518	May 4, 2010	AY80609004002AC	
Atom Z605	SLC3C (C0) SLBSA SLC3C	1	1 GHz	—	512 KB	DMI	1 × DDR-400 1 × DDR2-800		2.2 W	FC-BGA 518	May 4, 2010	AY80609005805AA	
Atom Z610	SLBZQ (C0) SLBS7	1	800 MHz	—	512 KB	DMI	1 × DDR-400 1 × DDR2-800		1.3 W	FC-BGA 518	May 4, 2010	AY80609005793AA	
Atom Z612	SLBZN (C0) SLBS8	1	900 MHz	—	512 KB	DMI	1 × DDR-400 1 × DDR2-800		1.3 W	FC-BGA 518	May 4, 2010	AY80609003042AC	
Atom Z615 (https://ark.intel.com/content/www/us/en/ark/products/49660.html)	SLBZL (C0) SLBS9	1	1.6 GHz	400 MHz	512 KB	DMI	1 × DDR2-800	0.7625–1.1 V	2.2 W	FC-BGA 518	May 4, 2010	AY80609005802AA	
Atom Z620	SLBZE (C0) SLBR8	1	900 MHz	—	512 KB	DMI	1 × DDR-400 1 × DDR2-800		1.3 W	FC-BGA 518	May 4, 2010	AY80609003996AC	
Atom Z625 (https://ark.intel.com/content/www/us/en/ark/products/49662.html)	SLBZD (C0) SLBR7	1	1.9 GHz	400 MHz	512 KB	DMI	1 × DDR2-800	0.7625–1.1 V	2.2 W	FC-BGA 518	May 4, 2010	AY80609003987AB	

Saltwell microarchitecture

"Penwell" (32 nm)

- All models support: MMX, SSE, SSE2, SSE3, SSSE3, Enhanced Intel SpeedStep Technology (EIST), XD bit (an NX bit implementation), Intel Burst Performance Technology (BPT), Hyper-Threading.
- Integrated PowerVR SGX540 GPU and DDR3 single-channel memory controller
- Package size: 12 mm × 12 × 1.0 mm
- Transistors: 140 million
- Die size: 65.2526 mm² (7.34 mm x 8.89 mm)

Model	sSpec number	Cores	Clock rate	GPU frequency	L2 cache	I/O bus	Memory	Voltage	TDP	Socket	Release date	Part number(s)	Release price (USD)
Atom Z2420 (https://ark.intel.com/content/www/us/en/ark/products/70814.html)	SR0YF (D1) SR0Z5 (D1)	1	1.2 GHz	400 MHz	512 KB		2 × LPDDR2-800	0.3–1.2 V	3 W	BGA617	January 2013	DG8064001195908	
Atom Z2460 (https://ark.intel.com/content/www/us/en/ark/products/70098.html)	SR0PR (D1) SR0PS (D1) SR0PV (D1) SR0TM (D1) SR0U6 (D1) SR0VZ (D1) SR114 (D1) SR118 (D1)	1	1.3-1.6 GHz	400 MHz	512 KB		2 × LPDDR2-800	0.3–1.2 V	3 W	BGA617	January 2012	DG8064001211503 DG8064001194903 DG8064001195902 DG8064001195703	
Atom Z2480 (https://ark.intel.com/content/www/us/en/ark/products/70097.html)	SR0U7 (D1) SR0ZK (D1) SR111 (D1) SR117 (D1)	1	1.3-2.0 GHz	400 MHz	512 KB		2 × LPDDR2-800	0.3–1.2 V	4 W	BGA617	Q4 2012	DG8064001195906 DG8064001195906 DG8064001195906 DG8064001195906	
Atom Z2610	SR0PT (D1)	1	1.3-1.6 GHz	400 MHz	512 KB		2 × LPDDR2-800		3 W	BGA617	Q2 2012	DG8064001196004	

Silvermont microarchitecture

"Merrifield" (22 nm)

- All models support: MMX, SSE, SSE2, SSE3, SSSE3, SSE4.1, SSE4.2, Enhanced Intel SpeedStep Technology (EIST), Intel 64, XD bit (an NX bit implementation), Intel VT-x, AES-NI, Intel Burst Performance Technology (BPT).
- Z3480 also supports Intel Wireless Display.
- Integrated PowerVR G6400 GPU, memory controller supporting two 32-bit LPDDR3 channels up to 4 GB, USB 3.0 controller, eMMC 4.5
- Paired with Intel XMM 7160 LTE modem supporting 4G/3G/2G
- Package size: 12 mm × 12 × 1.0 mm

Model	sSpec number	Cores	Clock rate	GPU frequency	L2 cache	I/O bus	Memory	Voltage	TDP	Socket	Release date	Part number(s)	Release price (USD)
Atom Z3460 (https://ark.intel.com/content/www/us/en/ark/products/70103.html)	SR1WR (B1) SR20G (B1) SR20U (B1)	2	1.6 GHz	400-457 MHz	1 MB		2 × LPDDR3-1066				March 2014	FG8065201850100	
Atom Z3480 (https://ark.intel.com/content/www/us/en/ark/products/70102.html)	SR1WS (B1) SR20F (B1)	2	2.13 GHz	457-533 MHz	1 MB		2 × LPDDR3-1066				March 2014	FG8065201850200	

"Moorefield" (22 nm)

- All models support: MMX, SSE, SSE2, SSE3, SSSE3, SSE4.1, SSE4.2, Enhanced Intel SpeedStep Technology (EIST), Intel 64, XD bit (an NX bit implementation), Intel VT-x, AES-NI, Intel Burst Performance Technology (BPT), Intel Wireless Display.
- GPU (PowerVR G6430) and memory controller are integrated onto the processor die
- Package size: 14 mm × 14 × 1.0 mm

Model	sSpec number	Cores	Clock rate	GPU frequency	L2 cache	I/O bus	Memory	Voltage	TDP	Socket	Release date	Part number(s)	Release price (USD)
Atom Z3530 (https://ark.intel.com/content/www/us/en/ark/products/84072.html)	SR1YR (B0)	4	1.33 GHz	457 MHz	2 × 1 MB		2 × LPDDR3-1600				H2 2014	GA8066301896101	
Atom Z3560 (https://ark.intel.com/content/www/us/en/ark/products/81194.html)	SR1WW (B0) SR1WX (B0)	4	1.83 GHz	457–533 MHz	2 × 1 MB		2 × LPDDR3-1600				H2 2014	GA8066301600200	
Atom Z3570 (https://ark.intel.com/content/www/us/en/ark/products/84324.html)		4	2.00 GHz	457–640 MHz	2 × 1 MB		2 × LPDDR3-1600				Q4 2014		
Atom Z3580 (https://ark.intel.com/content/www/us/en/ark/products/81195.html)	SR1WU (B0) SR1WV (B0)	4	2.33 GHz	457–533 MHz	2 × 1 MB		2 × LPDDR3-1600				H2 2014	GA8066301600100	
Atom Z3590 (https://ark.intel.com/content/www/us/en/ark/products/91319.html)	SR2GC (B0) SR2GD (B0)	4	2.50 GHz	457-640 MHz	2 × 1 MB		2 × LPDDR3-1600				Q3 2015	GA8066301828200	

"SoFIA" (28 nm)

- SoFIA (*smart or feature phone with Intel architecture*)^[6]
- All models support: MMX, SSE, SSE2, SSE3, SSSE3, SSE4, Enhanced Intel SpeedStep Technology (EIST), Intel 64, XD bit (an NX bit implementation), Intel Burst Performance Technology (BPT), Intel VT-x, AES-NI (based on Silvermont's specs)
- GPU (ARM Mali) and memory controller are integrated onto the processor die
- Package size: 34 × 40 mm
- SoFIA 3G SoC with Silvermont CPU
 - Integrated HSPA+ A-GOLD 620: 2G/3G RF, CNV, PMU, Audio (Atom x3-C3130)^[7]
- SoFIA 3G–R SoC with Silvermont CPU
 - Integrated HSPA+ A-GOLD 620: 2G/3G RF, CNV, PMU, Audio (Atom x3-C3230RK)^[7]
- SoFIA LTE (W) with Airmont CPU (Announced, but never launched)
 - Integrated LTE Cat. 4 (XG726-based), SMARTi 4.5, LnP/ CG2000, PMIC (Atom x3-C3440 & C3445)^[7]

Model	sSpec number	Cores	Clock rate	Burst	L2 cache	GPU model	GPU frequency	Memory	Connectivity	TDP	SDP	Socket	Release date	Part number(s)
Atom x3-C3130 (https://ark.intel.com/content/www/us/en/ark/products/87462.html)		2	1.0 GHz	—	512 KB	Mali 400 MP2 (dual core)	480 MHz	1×32 LPDDR2 800	2G/3G, GPS, Bluetooth, WiFi		2 W		H1 2015	
Atom x3-C3200RK (https://ark.intel.com/content/www/us/en/ark/products/87531.html)	SLKZW SLKYS SLL4C	4		1.1 GHz	1 MB	Mali 450 MP4 (quad core)	600 MHz	1×32 LPDDR2/3 1066, 2×16 DDR3/DDR3L 1333	WiFi only		2 W		H1 2015	PMB8016.P PMB8016.P PMB8016.P
Atom x3-C3205RK (https://ark.intel.com/content/www/us/en/ark/products/94228.html)	SLKYS	4		1.2 GHz	1 MB	Mali 450 MP4 (quad core)	600 MHz	1×32 LPDDR2/3 1066, 2×16 DDR3/DDR3L 1333	WiFi, Bluetooth, GPS		2 W	VF2BGA361	October 2016	PMB8016.P
Atom x3-C3230RK (https://ark.intel.com/content/www/us/en/ark/products/87461.html)	SLKZQ SLKYT SLL4B	4		1.1 GHz	1 MB	Mali 450 MP4 (quad core)	600 MHz	1×32 LPDDR2/3 1066, 2×16 DDR3/DDR3L 1333	2G/3G, GPS, Bluetooth, WiFi		2 W		H1 2015	PMB8018.P PMB8018.P PMB8018.P
Atom x3-C3235RK (https://ark.intel.com/content/www/us/en/ark/products/94227.html)		4		1.2 GHz	1 MB	Mali 450 MP4 (quad core)	600 MHz	1×32 LPDDR2/3 1066, 2×16 DDR3/DDR3L 1333	2G/3G, GPS, Bluetooth, WiFi		2 W	VF2BGA361	October 2016	
Atom x3-C3265RK (https://ark.intel.com/content/www/us/en/ark/products/97133.html)	SLLUL (A1)	4		1.1 GHz	1 MB	Mali 450 MP4 (quad core)	600 MHz	1×32 LPDDR2/3 1066, 2×16 DDR3/DDR3L 1333	WiFi, Bluetooth, GPS		2 W		October 2016	PMB8016T.
Atom x3-C3295RK (https://ark.intel.com/content/www/us/en/ark/products/97134.html)	SLLUK (A1)	4		1.1 GHz	1 MB	Mali 450 MP4 (quad core)	600 MHz	1×32 LPDDR2/3 1066, 2×16 DDR3/DDR3L 1333	2G/3G, GPS, Bluetooth, WiFi		2 W	VF2BGA361	October 2016	PMB8018T.
Atom x3-C3405 (https://ark.intel.com/content/www/us/en/ark/products/87530.html)		4	1.2 GHz	1.4 GHz	1 MB	Mali T720 MP2 (dual core)	456 MHz	1×32 LPDDR2/3 1066	WiFi only		2 W		H1 2015	
Atom x3-C3445 (https://ark.intel.com/content/www/us/en/ark/products/87460.html)	SR2G0	4	1.2 GHz	1.4 GHz	1 MB	Mali T720 MP2 (dual core)	456 MHz	1×32 LPDDR2/3 1066	2G/3G/4G LTE, GPS, Bluetooth, WiFi		2 W		H1 2015	PMB8020.P

Tablet processors/SoCs

Bonnell microarchitecture

"Lincroft" (45 nm)

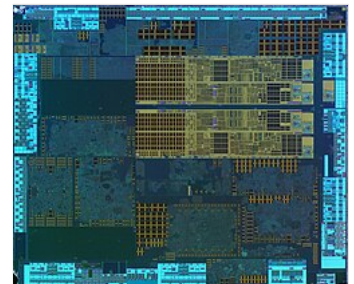
- All models support: MMX, SSE, SSE2, SSE3, SSSE3, Enhanced Intel SpeedStep Technology (EIST), XD bit (an NX bit implementation), Hyper-Threading. All except Z605 support Intel Burst Performance Technology (BPT).
- GMA 600 GPU and DDR2 single-channel memory controller are integrated onto the processor die^[5]
- Transistors: 140 million
- Die size: 7.34 mm × 8.89 mm = 65.2526 mm²
- Package size: 13.8 mm × 13.8 × 1.0 mm
- Steppings: C0

Model	sSpec number	Cores	Clock rate	GPU frequency	L2 cache	I/O bus	Memory	Voltage	TDP	Socket	Release date	Part number(s)	Release price (USD)
Atom Z650 (https://ark.intel.com/content/www/us/en/ark/products/55664.html)	SLC2Q (C0)	1	1.2 GHz	400 MHz	512 KB	DMI	1 × DDR2-800	1.1125–1.5 V	3 W	FC-BGA 518	April 11, 2011	AY80609007296AA	
Atom Z670 (https://ark.intel.com/content/www/us/en/ark/products/55663.html)	SLC2P (C0)	1	1.5 GHz	400 MHz	512 KB	DMI	1 × DDR2-800	1.1125–1.5 V	3 W	FC-BGA 518	April 11, 2011	AY80609007293AA	\$75

Saltwell microarchitecture

"Cloverview" (32 nm)

- All models support: MMX, SSE, SSE2, SSE3, SSSE3, Enhanced Intel SpeedStep Technology (EIST), XD bit (an NX bit implementation), Hyper-Threading, Intel Burst Performance Technology (BPT).
- GPU and memory controller are integrated onto the processor die
- Package size: 13.8 mm × 13.8 × 1.0 mm
- Steppings: B1, C0



Intel Atom Z2760 Saltwell die shot

Model	sSpec number	Cores	Clock rate	GPU frequency	L2 cache	I/O bus	Memory	Voltage	TDP	Socket	Release date	Part number(s)	Release price (USD)
Atom Z2520 (https://ark.intel.com/content/www/us/en/ark/products/75203.html)	SR161 (B1)	2	1.2 GHz	300 MHz	1 MB		2 × LPDDR2-1066	0.3–1.2 V			February 25, 2013	DG8065101533700	
Atom Z2560 (https://ark.intel.com/content/www/us/en/ark/products/70101.html)	SR145 (B1)	2	1.6 GHz	400 MHz	1 MB		2 × LPDDR2-1066	0.3–1.2 V			February 25, 2013	DG8065101274708	
Atom Z2580 (https://ark.intel.com/content/www/us/en/ark/products/70100.html)	SR12U (C0) SR12V (C0) SR146 (B1)	2	2.0 GHz	400 MHz	1 MB		2 × LPDDR2-1066	0.3–1.2 V		FC-MB4760	February 25, 2013	DG8065101418902 DG8065101418900	
Atom Z2760 (https://ark.intel.com/content/www/us/en/ark/products/70105.html)	SR0WW (C0) SR0Z4 (C0)	2	1.8 GHz	533 MHz	1 MB		2 × LPDDR2-800			FC-MB4760	September 27, 2012	DG8065001313500	\$41

No official TDP available. For power data see^[8] page 129–130.

Silvermont microarchitecture

"Bay Trail-T" (22 nm)

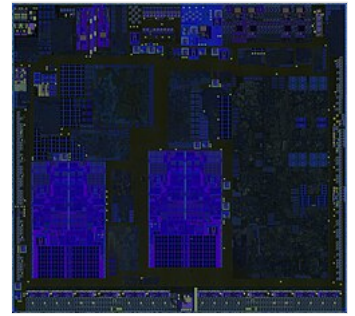
- All models support: MMX, SSE, SSE2, SSE3, SSSE3, SSE4, Enhanced Intel SpeedStep Technology (EIST), Intel 64, XD bit (an NX bit implementation), Intel Burst Performance Technology (BPT), Intel VT-x, AES-NI, TXT/TXE
- Package size: 17 mm × 17 × 1.0 mm

Type 4 SoC:^[9]

- DDR3L single-channel or LPDDR3 dual-channel memory controller supporting up to 4 GB; ECC supported in single-channel mode
- Display controller with 2 MIPI DSI ports and 2 DDI ports (eDP 1.3, DP 1.1a, DVI, or HDMI 1.4a)
- Integrated Intel HD Graphics (Gen7) GPU
- One USB 3.0 controller supporting one USB 3.0 port (can be multiplexed to support four USB 2.0 ports)
- One USB 2.0 controller supporting four ports
- Integrated LPE audio controller
- Integrated image signal processor supporting two MIPI CSI ports, 24 MP sensors, and stereoscopic video
- Integrated memory card reader supporting SDIO 3.0, eMMC 4.51, and SDXC
- Serial I/O supporting SPI, UART (serial port), I2C or PWM

Type 3 SoC:

- DDR3L/L-RS single-channel memory controller supporting up to 2 GB
- Display controller with 1 MIPI DSI port and 2 DDI ports (HDMI 1.4)
- Integrated Intel HD Graphics (Gen7) GPU
- One USB controller supporting two USB 2.0 ports
- Integrated LPE audio controller
- Integrated image signal processor supporting two MIPI CSI ports and 8 MP sensors
- Integrated memory card reader supporting SDIO 3.0, eMMC 4.51, and SDXC
- Serial I/O supporting SPI, UART (serial port), I2C or PWM



Intel Atom Z3735E Bay Trail (Silvermont)
Die Shot

Model	sSpec number	Cores	Clock rate	Burst	L2 cache	GPU model	GPU frequency	Memory	TDP	SDP	Socket	Release date	Part number(s)	F
Atom Z3680	SR1S2 (B3)	2	1.33 GHz	2 GHz	1 MB	Intel Graphics Technology (4 EUs)	311-667 MHz	2 × LPDDR3-1066	—	2 W	UTFCBGA1380	September 2013	FH8065301455695	
Atom Z3680D	SR1S4 (B3)	2	1.33 GHz	2 GHz	1 MB	HD Graphics (4 EUs)	313-688 MHz	1 × DDR3L-1333	—	2.2 W	UTFCBGA1380	September 2013	FH8065301574827	
Atom Z3735D (https://ark.intel.com/content/www/us/en/ark/products/80272.html)	SR1U7 (C0)	4	1.33 GHz	1.83 GHz	2 MB	HD Graphics (4 EUs)	311-646 MHz	1 × DDR3L-1333 (64-bit)	—	2.2 W	UTFCBGA1380	May 2014	FH8065301685597	
Atom Z3735E (https://ark.intel.com/content/www/us/en/ark/products/80273.html)	SR1U9 (C0)	4	1.33 GHz	1.83 GHz	2 MB	HD Graphics (4 EUs)	311-646 MHz	1 × DDR3L-1333 (32-bit)	—	2.2 W	UTFCBGA1380	May 2014	FH8065301685963	\$
Atom Z3735F (https://ark.intel.com/content/www/us/en/ark/products/80274.html)	SR1UB (C0)	4	1.33 GHz	1.83 GHz	2 MB	HD Graphics (4 EUs)	311-646 MHz	1 × DDR3L-1333 (64-bit)	—	2.2 W	UTFCBGA592	May 2014	FH8065301685598	\$
Atom Z3735G (https://ark.intel.com/content/www/us/en/ark/products/80275.html)	SR1UD (C0)	4	1.33 GHz	1.83 GHz	2 MB	HD Graphics (4 EUs)	311-646 MHz	1 × DDR3L-1333 (32-bit)	—	2.2 W	UTFCBGA592	May 2014	FH8065301685965	\$
Atom Z3736F (https://ark.intel.com/content/www/us/en/ark/products/82115.html)	SR20D (C0)	4	1.33 GHz	2.16 GHz	2 MB	HD Graphics (4 EUs)	313-646 MHz	1 × DDR3L-1333 (64-bit)	—	2.2 W	UTFCBGA592	July 2014	FH8065301685500	\$
Atom Z3736G (https://ark.intel.com/content/www/us/en/ark/products/82116.html)	SR20E (C0)	4	1.33 GHz	2.16 GHz	2 MB	HD Graphics (4 EUs)	313-646 MHz	1 × DDR3L-1333 (32-bit)	—	2.2 W	UTFCBGA592	July 2014	FH8065301685971	\$
Atom Z3740 (https://ark.intel.com/content/www/us/en/ark/products/76759.html)	SR1M5 (B2) SR1RW (B3)	4	1.33 GHz	1.86 GHz	2 MB	HD Graphics (4 EUs)	311-667 MHz	2 × LPDDR3-1066	—	2 W	UTFCBGA1380	September 2013	FH8065301455601 FH8065301455693	\$
Atom Z3740D (https://ark.intel.com/content/www/us/en/ark/products/76759.html)	SR1M9 (B2) SR1S0 (B3)	4	1.33 GHz	1.86 GHz	2 MB	HD Graphics (4 EUs)	313-688 MHz	1 × DDR3L-1333	—	2.2 W	UTFCBGA1380	September 2013	FH8065301574801 FH8065301574825	\$

ontent/ www/u s/en/ar k/produ cts/784 16.html															
Atom Z3745 (https:// ark.inte l.com/c ontent/ www/u s/en/ar k/produ cts/802 70.html)	SR1SP (C0)	4	1.33 GHz	1.86 GHz	2 MB	HD Graphics (4 EUs)	311-778 MHz	2 × LPDDR3- 1066	—	2 W	UTFCBGA1380	May 2014	FH8065301455630	\$	
Atom Z3745D (https:// ark.inte l.com/c ontent/ www/u s/en/ar k/produ cts/802 71.html)	SR1ST (C0)	4	1.33 GHz	1.83 GHz	2 MB	HD Graphics (4 EUs)	311-792 MHz	1 × DDR3L- 1333	—	2.2 W	UTFCBGA1380	May 2014	FH8065301574844		
Atom Z3770 (https:// ark.inte l.com/c ontent/ www/u s/en/ar k/produ cts/767 60.html)	SR1M3 (B2) SR1RU (B3)	4	1.46 GHz	2.39 GHz	2 MB	HD Graphics (4 EUs)	311-667 MHz	2 × LPDDR3- 1066	—	2 W	UTFCBGA1380	September 2013	FH8065301455604 FH8065301455691	\$	
Atom Z3770D (https:// ark.inte l.com/c ontent/ www/u s/en/ar k/produ cts/784 15.html)	SR1M7 (B2) SR1RY (B3)	4	1.50 GHz	2.41 GHz	2 MB	HD Graphics (4 EUs)	313-688 MHz	1 × DDR3L- 1333	—	2.2 W	UTFCBGA1380	September 2013	FH8065301574800 FH8065301574823	\$	
Atom Z3775 (https:// ark.inte l.com/c ontent/ www/u s/en/ar k/produ cts/802 68.html)	SR1SM (C0)	4	1.46 GHz	2.39 GHz	2 MB	HD Graphics (4 EUs)	311-778 MHz	2 × LPDDR3- 1066	—	2 W	UTFCBGA1380	May 2014	FH8065301455629	\$	
Atom Z3775D (https:// ark.inte l.com/c ontent/ www/u s/en/ar k/produ cts/802 69.html)	SR1SR (C0)	4	1.49 GHz	2.41 GHz	2 MB	HD Graphics (4 EUs)	311-792 MHz	1 × DDR3L- 1333	—	2.2 W	UTFCBGA1380	May 2014	FH8065301574843	\$	
Atom Z3785 (https:// ark.inte l.com/c ontent/ www/u s/en/ar k/produ cts/808 88.html)	SR1V9 (C0)	4	1.49 GHz	2.41 GHz	2 MB	HD Graphics (4 EUs)	313-833 MHz	2 × LPDDR3- 1333	—	2.2 W	UTFCBGA1380	July 2014	FH8065301455637		

Atom Z3795 (https://ark.intel.com/content/www/us/en/ark/products/80267.html)	SR1SK (C0)	4	1.59 GHz	2.39 GHz	2 MB	HD Graphics (4 EUs)	311-778 MHz	2 × LPDDR3-1066	—	2 W	UTFCBGA1380	May 2014	FH8065301455628	\$
---	------------	---	----------	----------	------	---------------------	-------------	-----------------	---	-----	-------------	----------	-----------------	----

Airmont microarchitecture

"Cherry Trail-T" (14 nm)

- All models support: MMX, SSE, SSE2, SSE3, SSSE3, SSE4, Enhanced Intel SpeedStep Technology (EIST), Intel 64, XD bit (an NX bit implementation), Intel VT-x2 (VT-x with EPT, FlexMigration, FlexPriority and VPID^{[10][11]} AES-NI.,^[12] TXT/TXE
- Package size: 17 mm × 17 × 1.0 mm

Type 4 SoC:^[9]

- LPDDR3 dual-channel memory controller supporting up to 8 GB
- PCI Express 2.0 controller with 2 lanes
- Display controller with 2 MIPI DSI ports and 3 DDI ports (eDP 1.3, DP 1.1a, DVI, or HDMI 1.4b)
- Integrated Intel HD Graphics (Gen8) GPU
- One USB xHCI controller supporting three USB 3.0 ports, two SSCI ports, and two HSIC ports
- One USB xDCI controller supporting one USB 3.0 port
- Integrated LPE audio controller
- Integrated image signal processor supporting three MIPI CSI ports and 13 MP ZLS sensors
- Integrated memory card reader supporting SDIO 3.0, eMMC 4.51, and SDXC
- Serial I/O supporting SPI, UART (serial port), I2C or PWM

Type 3 SoC:

- DDR3L/L-RS single-channel memory controller supporting up to 2 GB
- PCI Express 2.0 controller with 1 lane
- Display controller with 2 MIPI DSI ports and 2 DDI ports (eDP 1.3, DP 1.1a, DVI, or HDMI 1.4b)
- Integrated Intel HD Graphics (Gen8) GPU
- One USB controller supporting three USB 2.0 ports and two HSIC ports
- Integrated LPE audio controller
- Integrated image signal processor supporting three MIPI CSI ports and 8 MP sensors
- Integrated memory card reader supporting SDIO 3.0, eMMC 4.51, and SDXC
- Serial I/O supporting SPI, UART (serial port), I2C or PWM

Model	sSpec number	Cores	Clock rate	Burst	L2 cache	GPU model	GPU frequency	Memory	TDP	SDP	Socket	Release date	Part number(s)
Atom x5-Z8300 (http://ark.intel.com/content/www/us/en/ark/products/87383.html)	SR29Z (C0)	4	1.44 GHz	1.84 GHz	2 MB	Intel Graphics Technology (12 EUs)	200-500 MHz	1 × DDR3L-1600	2.17 W	2 W	UTFCBGA592	March 2015	FJ8066401836609
Atom x5-Z8330 (http://ark.intel.com/content/www/us/en/ark/products/91564.html)	SR2KU (D1)	4	1.44 GHz	1.92 GHz	2 MB	HD Graphics 400	200-500 MHz	1 × DDR3L-1600	2.17 W	2 W	UTFCBGA592	February 2016	FJ8066401836619
Atom x5-Z8350 (http://ark.intel.com/content/www/us/en/ark/products/93361.html)	SR2KT (D1)	4	1.44 GHz	1.92 GHz	2 MB	HD Graphics (12 EUs)	200-500 MHz	1 × DDR3L-1600	2.17 W	2 W	UTFCBGA592	February 2016	FJ8066401836620
Atom x5-Z8500 (http://ark.intel.com/content/www/us/en/ark/products/85474.html)	SR27N (C0) SR2GN (C0)	4	1.44 GHz	2.24 GHz	2 MB	HD Graphics (12 EUs)	200-600 MHz	2 × LPDDR3-1600	2.17 W	2 W	UTFCBGA1380	March 2015	FJ8066401715814 FJ8066401715842
Atom x5-Z8550 (http://ark.intel.com/content/www/us/en/ark/products/93360.html)	SR2KH (D1)	4	1.44 GHz	2.4 GHz	2 MB	HD Graphics 400	200-600 MHz	2 × LPDDR3-1600	2.17 W	2 W	UTFCBGA1380	February 2016	FJ8066401715843
Atom x7-Z8700 (http://ark.intel.com/content/www/us/en/ark/products/85475.html)	SR27M (C0) SR29W (C0)	4	1.60 GHz	2.4 GHz	2 MB	HD Graphics (16 EUs)	200-600 MHz	2 × LPDDR3-1600	2.17 W	2 W	UTFCBGA1380	March 2015	FJ8066401715809 FJ8066401715825

Atom x7- Z8750 (http://ark.intel.com/content/www/us/en/ark/products/93362.html)	SR2KG (D1)	4	1.60 GHz	2.56 GHz	2 MB	HD Graphics (16 EUs)	200-600 MHz	2 × LPDDR3- 1600	2.17 W	2 W	UTFCBGA1380	February 2016	FJ8066401715827
---	------------	---	-------------	-------------	------	----------------------------	----------------	------------------------	--------	-----	-------------	------------------	-----------------

Embedded processors/SoCs

Bonnell microarchitecture

"Tunnel Creek" (45 nm)

- CPU core supports IA-32 architecture, MMX, SSE, SSE2, SSE3, SSSE3, Enhanced Intel SpeedStep Technology (EIST), hyper-threading, Intel VT-x.
- Package size: 22 mm × 22 mm
- Steppings: B0
- Temperature range: for (E620, E640, E660, E680): 0 °C to +70 °C, for (E620T, E640T, E660T, E680T): -40 °C to +85 °C.
- DDR2 single-channel memory controller supporting up to 2 GB
- PCI Express 1.0a controller with 4 lanes
- Display controller with LVDS and serial DVO ports
- Integrated GMA600 (PowerVR) GPU
- Integrated HD audio controller
- Serial I/O supporting SPI

Model	sSpec number	Cores	Clock rate	GPU frequency	L2 cache	I/O bus	Memory	Voltage	TDP	Socket	Release date	Part number(s)	Release price (USD)
Atom E620 (http://ark.intel.com/content/www/us/en/ark/products/52491.html)	SLH56 (B0) SLJ32 (B1)	1	600 MHz	320 MHz	512 KB	PCIe	1 × DDR2-800	0.8–1.175 V	3.3 W	FC-BGA 676	September 14, 2010	CT80618005844AA	\$19
Atom E620T (http://ark.intel.com/content/www/us/en/ark/products/52492.html)	SLH5N (B0) SLJ36 (B1)	1	600 MHz	320 MHz	512 KB	PCIe	1 × DDR2-800	0.8–1.175 V	3.3 W	FC-BGA 676	September 14, 2010	CT80618005844AB	\$22
Atom E640 (http://ark.intel.com/content/www/us/en/ark/products/52493.html)	SLH55 (B0) SLJ33 (B1)	1	1 GHz	320 MHz	512 KB	PCIe	1 × DDR2-800	0.8–1.175 V	3.6 W	FC-BGA 676	September 14, 2010	CT80618005841AA	\$29
Atom E640T (http://ark.intel.com/content/www/us/en/ark/products/52494.html)	SLH5M (B0) SLJ37 (B1)	1	1 GHz	320 MHz	512 KB	PCIe	1 × DDR2-800	0.8–1.175 V	3.6 W	FC-BGA 676	September 14, 2010	CT80618005841AB	\$37
Atom E660 (http://ark.intel.com/content/www/us/en/ark/products/52495.html)	SLH54 (B0) SLJ34 (B1)	1	1.3 GHz	400 MHz	512 KB	PCIe	1 × DDR2-800	0.8–1.175 V	3.6 W	FC-BGA 676	September 14, 2010	CT80618003201AA	\$54
Atom E660T (http://ark.intel.com/content/www/us/en/ark/products/52496.html)	SLH5L (B0) SLJ38 (B1)	1	1.3 GHz	400 MHz	512 KB	PCIe	1 × DDR2-800	0.8–1.175 V	3.6 W	FC-BGA 676	September 14, 2010	CT80618003201AB	\$64
Atom E680 (http://ark.intel.com/content/www/us/en/ark/products/52497.html)	SLH94 (B0) SLJ35 (B1)	1	1.6 GHz	400 MHz	512 KB	PCIe	1 × DDR2-800	0.8–1.175 V	4.5 W	FC-BGA 676	September 14, 2010	CT80618007035AA	\$74
Atom E680T (http://ark.intel.com/content/www/us/en/ark/products/52498.html)	SLH95 (B0) SLJ39 (B1)	1	1.6 GHz	400 MHz	512 KB	PCIe	1 × DDR2-800	0.8–1.175 V	4.5 W	FC-BGA 676	September 14, 2010	CT80618007035AB	\$85

"Stellarton" (45 nm)

- "Tunnel Creek" CPU with an Altera Field Programmable Gate Array (FPGA)
- CPU core supports IA-32 architecture, MMX, SSE, SSE2, SSE3, SSSE3, Enhanced Intel SpeedStep Technology (EIST), Hyper-Threading, Intel VT-x
- Package size: 37.5 mm × 37.5 mm
- Steppings: B0
- TDP without FPGA. Total package TDP depends on functions included in FPGA. Max. TDP 7 W.
- Temperature range: for (E625C, E645C, E665C): 0 °C to +70 °C, for (E625CT, E645CT, E665CT): -40 °C to +85 °C.
- DDR2 single-channel memory controller supporting up to 2 GB
- PCI Express 1.0a controller with 4 lanes
- Display controller with LVDS and serial DVO ports
- Integrated GMA600 (PowerVR) GPU
- Integrated HD audio controller

- Serial I/O supporting SPI

Model	sSpec number	Cores	Clock rate	GPU frequency	L2 cache	I/O bus	Memory	Voltage	TDP	Socket	Release date	Part number(s)	Release price (USD)
Atom E625C (https://ark.intel.com/content/www/us/en/ark/products/53868.html)	SLH9Z (B0)	1	600 MHz	320 MHz	512 KB	PCIe	1 × DDR2-800	0.8–1.175 V	2.7 W	FC-BGA 1466	November 22, 2010	CY80632007227AB	\$61
Atom E625CT (https://ark.intel.com/content/www/us/en/ark/products/53869.html)	SLH9K (B0)	1	600 MHz	320 MHz	512 KB	PCIe	1 × DDR2-800	0.8–1.175 V	2.7 W	FC-BGA 1466	November 22, 2010	CY80632007227AA	\$65
Atom E645C (https://ark.intel.com/content/www/us/en/ark/products/53870.html)	SLH9Y (B0)	1	1 GHz	320 MHz	512 KB	PCIe	1 × DDR2-800	0.8–1.175 V	3.6 W	FC-BGA 1466	November 22, 2010	CY80632007221AB	\$72
Atom E645CT (https://ark.intel.com/content/www/us/en/ark/products/53871.html)	SLH9J (B0)	1	1 GHz	320 MHz	512 KB	PCIe	1 × DDR2-800	0.8–1.175 V	3.6 W	FC-BGA 1466	November 22, 2010	CY80632007221AA	\$79
Atom E665C (https://ark.intel.com/content/www/us/en/ark/products/53872.html)	SLH9X (B0)	1	1.3 GHz	400 MHz	512 KB	PCIe	1 × DDR2-800	0.8–1.175 V	3.6 W	FC-BGA 1466	November 22, 2010	CY80632007224AB	\$97
Atom E665CT (https://ark.intel.com/content/www/us/en/ark/products/53873.html)	SLH9H (B0)	1	1.3 GHz	400 MHz	512 KB	PCIe	1 × DDR2-800	0.8–1.175 V	3.6 W	FC-BGA 1466	November 22, 2010	CY80632007224AA	\$106

Silvermont microarchitecture

"Bay Trail-I" (22 nm)

- All models support: MMX, SSE, SSE2, SSE3, SSSE3, Enhanced Intel SpeedStep Technology (EIST), Intel 64, XD bit (an NX bit implementation), Intel VT-x, AES-NI, TXT/TXE
- Package size: 25 mm × 27 mm
- DDR3L dual-channel memory controller supporting up to 4 GB; ECC supported in single-channel mode
- Display controller with 2 DDI ports (eDP 1.3, DP 1.1a, DVI, or HDMI 1.4a)
- Integrated Intel HD Graphics (Gen7) GPU
- PCI Express 2.0 controller with four lanes and four root ports
- Two SATA-300 ports
- One USB 3.0 controller supporting one USB 3.0 port (can be multiplexed to support four USB 2.0 ports)
- One USB 2.0 controller supporting four ports
- Integrated LPE and HD audio controllers
- Integrated image signal processor supporting three MIPI CSI ports, 24 MP sensors, and stereoscopic video
- Integrated memory card reader supporting SDIO 3.0, eMMC 4.5, and SDXC
- Serial I/O supporting SPI, UART (serial port), I2C or PWM

Model	sSpec number	Cores	Clock rate	Burst	L2 cache	GPU model	GPU frequency	Memory	TDP	SDP	Socket	Release date	Part number(s)	Release price (USD)
Atom E3805 (http://ark.intel.com/content/www/us/en/ark/products/84311.html)	SR20Y (D0) SR2UL (D0) SR3V4 (D1) SR3V3 (D1)	2	1.33 GHz	—	1 MB	—	—	1 × DDR3L-1066	3 W	—	FC-BGA 1170	October 2014	FH8065301989700 FH8065301989701 FH8065301989701 FH8065301989701	\$31
Atom E3815 (http://ark.intel.com/content/www/us/en/ark/products/78476.html)	SR1RA (B3) SR1XA (D0) SR2UK (D0) SR3V2 (D1) SR3V1 (D1)	1	1.46 GHz	—	512 KB	HD Graphics (4 EUs)	400 MHz	1 × DDR3L-1066	5 W	—	FC-BGA 1170	October 2013	FH8065301567411 FH8065301567414 FH8065301567416 FH8065301567416 FH8065301567416	\$31
Atom E3825 (http://ark.intel.com/content/www/us/en/ark/products/78474.html)	SR1RB (B3) SR1X9 (D0) SR2UJ (D0) SR3V0 (D1) SR3UZ (D1)	2	1.33 GHz	—	1 MB	HD Graphics (4 EUs)	533 MHz	1 × DDR3L-1066	6 W	—	FC-BGA 1170	October 2013	FH8065301567311 FH8065301567313 FH8065301567315 FH8065301567315 FH8065301567315	\$34
Atom E3826 (http://ark.intel.com/content/www/us/en/ark/products/78477.html)	SR1RC (B3) SR1X8 (D0) SR2UG (D0) SR3UW (D1) SR3UX (D1)	2	1.46 GHz	—	1 MB	HD Graphics (4 EUs)	533-667 MHz	2 × DDR3L-1066	7 W	—	FC-BGA 1170	October 2013	FH8065301542213 FH8065301542215 FH8065301542217 FH8065301542217 FH8065301542217	\$37
Atom E3827 (http://ark.intel.com/content/www/us/en/ark/products/78478.html)	SR1RD (B3) SR1X7 (D0) SR2UH (D0) SR3UY (D1) SR3UV (D1)	2	1.75 GHz	—	1 MB	HD Graphics (4 EUs)	542-792 MHz	2 × DDR3L-1333	8 W	—	FC-BGA 1170	October 2013	FH8065301487916 FH8065301487918 FH8065301487920 FH8065301487920 FH8065301487920	\$41
Atom E3845 (http://ark.intel.com/content/www/us/en/ark/products/78475.html)	SR1RE (B3) SR1X6 (D0) SR2UF (D0) SR3UU (D1) SR3UT (D1)	4	1.91 GHz	—	2 MB	HD Graphics (4 EUs)	542-792 MHz	1 × DDR3L-1333	10 W	—	FC-BGA 1170	October 2013	FH8065301487715 FH8065301487717 FH8065301487719 FH8065301487719 FH8065301487719	\$52

Airmont microarchitecture

"Braswell" (14 nm)

- All models support: MMX, SSE, SSE2, SSE3, SSSE3, SSE4.1, SSE4.2, Enhanced Intel SpeedStep Technology (EIST), Intel 64, XD bit (an NX bit implementation), Intel VT-x, AES-NI.
- GPU and memory controller are integrated onto the processor die
- GPU is based on Broadwell Intel HD Graphics, with 12 execution units, and supports DirectX 11.2, OpenGL 4.3, OpenGL ES 3.0 and OpenCL 1.2 (on Windows).
- Package size: 25 mm × 27 mm

Model	sSpec number	Cores	Clock rate	Burst	L2 cache	GPU model	GPU frequency	Memory	TDP	SDP	Socket	Release date	Part number(s)	Release price (USD)
Atom x5-E8000 (http://ark.intel.com/content/www/us/en/ark/products/92124.html)	SR2LV (D1)	4	1.04 GHz	2.0 GHz	2 MB	Intel Graphics Technology (12 EUs)	320 MHz	2 × DDR3L-1600	5 W	—	FC-BGA 1170	January 2016	FH8066501715946	\$39

Goldmont microarchitecture

"Apollo Lake" (14 nm)

- All models support: MMX, SSE, SSE2, SSE3, SSSE3, SSE4.1, SSE4.2, Enhanced Intel SpeedStep Technology (EIST), Intel 64, XD bit (an NX bit implementation), Intel VT-x, Intel VT-d, AES-NI, TXT/TXE
- Package size: 24 mm × 31 mm
- DDR3L/LPDDR3/LPDDR4 dual-channel memory controller supporting up to 8 GB; support for DDR3L with ECC
- Display controller with 1 MIPI DSI port and 2 DDI ports (eDP 1.3, DP 1.1a, or HDMI 1.4b)
- Integrated Intel HD Graphics (Gen9) GPU
- PCI Express 2.0 controller supporting 6 lanes (3 dedicated and 3 multiplexed with USB 3.0); 4 lanes available externally
- Two USB 3.0 ports (1 dual role, 1 dedicated, 3 multiplexed with PCI Express 2.0 and 1 multiplexed with one SATA-300 port)
- Two USB 2.0 ports
- Two SATA-600 ports (one multiplexed with USB 3.0)
- Integrated HD audio controller
- Integrated image signal processor supporting four MIPI CSI ports and 13 MP sensors
- Integrated memory card reader supporting SDIO 3.01 and eMMC 5.0
- Serial I/O supporting SPI, HSUART (serial port) and I2C

Model	sSpec number	Cores	Clock rate	Burst	L2 cache	GPU model	GPU frequency	Memory	TDP	SDP	Socket	Release date	Part number(s)	Release price (USD)
Atom x5-E3930 (http://ark.intel.com/content/www/us/en/ark/products/96486.html)	SR33Q (B1) SREKA (F1)	2	1.3 GHz	1.8 GHz	2 MB	HD Graphics 500	400–550 MHz	4 × DDR3L-1866 4 × LPDDR4-2133	6.5 W	—	FC-BGA 1296	October 2016	LH8066803102701	\$34
Atom x5-E3940 (http://ark.intel.com/content/www/us/en/ark/products/96485.html)	SR33M (B1) SREK6 (F1)	4	1.6 GHz	1.8 GHz	2 MB	HD Graphics 500	400–600 MHz	4 × DDR3L-1866 4 × LPDDR4-2133	9.5 W	—	FC-BGA 1296	October 2016	LH8066803102401	\$42
Atom x7-E3950 (http://ark.intel.com/content/www/us/en/ark/products/96488.html)	SR33P (B1) SREK9 (F1)	4	1.6 GHz	2 GHz	2 MB	HD Graphics 505	500–650 MHz	4 × DDR3L-1866 4 × LPDDR4-2400	12 W	—	FC-BGA 1296	October 2016	LH8066803102601	\$57

Tremont microarchitecture

"Elkhart Lake" (10 nm)

- All models support: MMX, SSE, SSE2, SSE3, SSSE3, SSE4.1, SSE4.2, Intel 64, XD bit (an NX bit implementation), Intel VT-x, Intel VT-d, AES-NI.
- GPU is based on Gen11 Intel HD Graphics, with up to 32 execution units, and supports up to 3 displays (4K @ 60 Hz) through HDMI, DP, eDP, or DSI.
- SoC peripherals include 4 × USB 2.0/3.0/3.1, 2 × SATA, 3 × 2.5GbE LAN, UART, and up to 8 lanes of PCI Express 3.0 in x4, x2, and x1 configurations.
- Package size: 35 mm × 24 mm

Model	sSpec number	Cores	Clock rate	Burst	L2 cache	GPU model	GPU frequency	Memory	TDP	SDP	Socket	Release date	Part number(s)	Relea price (US\$)
Atom x6200FE	SRKST (B1)	2	1.0 GHz	—	1 MB	—	—	4 × LPDDR4X-4267 2 × DDR4-3200	4.5 W	—	FC-BGA 1493	Q1 2021	FH8070304289582	\$37
Atom x6211E	SRKUD (B1)	2	1.2 GHz	3.0 GHz	1.5 MB	UHD Graphics (16 EUs)	350–750 MHz	4 × LPDDR4X-4267 2 × DDR4-3200	6 W	—	FC-BGA 1493	Q1 2021	FH8070304243807	\$35
Atom x6212RE	SRKLE (B1)	2	1.2 GHz	—	1.5 MB	UHD Graphics (16 EUs)	350 MHz	4 × LPDDR4X-4267 2 × DDR4-3200	6 W	—	FC-BGA 1493	Q1 2021	FH8070304289568	\$37
Atom x6413E	SRKLC (B1)	4	1.5 GHz	3.0 GHz	1.5 MB	UHD Graphics (16 EUs)	500–750 MHz	4 × LPDDR4X-4267 2 × DDR4-3200	9 W	—	FC-BGA 1493	Q1 2021	FH8070304243865	\$43
Atom x6414RE	SRKLF (B1)	4	1.5 GHz	—	1.5 MB	UHD Graphics (16 EUs)	400 MHz	4 × LPDDR4X-4267 2 × DDR4-3200	9 W	—	FC-BGA 1493	Q1 2021	FH8070304289591	\$46
Atom x6425E	SRKUE (B1)	4	1.8 GHz	3.0 GHz	1.5 MB	UHD Graphics (32 EUs)	500–750 MHz	4 × LPDDR4X-4267 2 × DDR4-3200	12 W	—	FC-BGA 1493	Q1 2021	FH8070304243808	\$56
Atom x6425RE	SRKLG (B1)	4	1.9 GHz	—	1.5 MB	UHD Graphics (32 EUs)	400 MHz	4 × LPDDR4X-4267 2 × DDR4-3200	12 W	—	FC-BGA 1493	Q1 2021	FH8070304289558	\$59
Atom x6427FE	SRKLH (B1)	4	1.9 GHz	—	1.5 MB	UHD Graphics (32 EUs)	400 MHz	4 × LPDDR4X-4267 2 × DDR4-3200	12 W	—	FC-BGA 1493	Q1 2021	FH8070304289690	\$70

Gracemont microarchitecture

"Amston Lake" (7 nm)

In Q2 2024 Intel launched these cpus: Atom® x7203C, Atom® x7211RE, Atom® x7213RE, Atom® x7405C, Atom® x7433RE, Atom® x7809C, Atom® x7835RE. These processors have 2-8 cpu cores and use 6-25 watts of power.^[13]

Server SoCs

All Atom server processors include ECC support.

Saltwell microarchitecture

"Centerton" (32 nm)

- All models support: MMX, SSE, SSE2, SSE3, SSSE3, Hyper-threading, Intel 64, Intel VT-x, ECC memory.

Model	sSpec number	Cores	Clock rate	GPU frequency	L2 cache	I/O bus	Memory	Voltage	TDP	Socket	Release date	Part number(s)	Release price (USD)
Atom S1220 (https://ark.intel.com/content/www/us/en/ark/products/71269.html)	SLK2K (B1)	2	1.6 GHz	—	2 × 512 KB	8 × PCIe 2.0	DDR3-1333		8.1 W	FC-BGA 1283	December 11, 2012	DH80S1220	\$54
Atom S1240 (https://ark.intel.com/content/www/us/en/ark/products/71268.html)	SLK2J (B1)	2	1.6 GHz	—	2 × 512 KB	8 × PCIe 2.0	DDR3-1333		6.1 W	FC-BGA 1283	December 11, 2012	DH80S1240	\$64
Atom S1260 (https://ark.intel.com/content/www/us/en/ark/products/71267.html)	SLK2H (B1)	2	2.0 GHz	—	2 × 512 KB	8 × PCIe 2.0	DDR3-1333		8.5 W	FC-BGA 1283	December 11, 2012	DH80S1260	\$64

"Briarwood" (32 nm)

- All models support: MMX, SSE, SSE2, SSE3, SSSE3, Hyper-threading, Intel 64, Intel VT-x, ECC memory.

Model	sSpec number	Cores	Clock rate	GPU frequency	L2 cache	I/O bus	Memory	Voltage	TDP	Socket	Release date	Part number(s)	Release price (USD)
Atom S1269 (https://ark.intel.com/content/www/us/en/ark/products/71272.html)	SLK2G (B1)	2	1.6 GHz	—	2 × 512 KB	32 × PCIe 2.0	DDR3-1333		11.7 W	FC-BGA 1283	Q2 2013	DH80S1269	\$80
Atom S1279 (https://ark.intel.com/content/www/us/en/ark/products/71271.html)	SLK2F (B1)	2	1.6 GHz	—	2 × 512 KB	40 × PCIe 2.0	DDR3-1333		13.1 W	FC-BGA 1283	Q2 2013	DH80S1279	\$103
Atom S1289 (https://ark.intel.com/content/www/us/en/ark/products/71270.html)	SLK2E (B1)	2	2.0 GHz	—	2 × 512 KB	40 × PCIe 2.0	DDR3-1333		14.1 W	FC-BGA 1283	Q2 2013	DH80S1289	\$120

Silvermont microarchitecture

"Avoton" (22 nm)

- All models support: MMX, SSE, SSE2, SSE3, SSSE3, SSE4.1, SSE4.2, Enhanced Intel SpeedStep Technology (EIST), Intel Turbo Boost, Intel 64 (according to Datasheet), XD bit (an NX bit implementation), Intel VT-x, AES-NI, ECC memory.
- Dual-core SoC peripherals include 4 × USB 2.0, 2 × SATA, 2 × Integrated GbE LAN, 2 × UART, and 4 lanes of PCI Express 2.0, in x4, x2, and x1 configurations.
- Quad-core SoC peripherals include 4 × USB 2.0, 2 (C2530) or 6 (C2550) × SATA, 2 × Integrated GbE LAN, 2 × UART, and 8 lanes of PCI Express 2.0, in x8, x4, x2, and x1 configurations.
- C2730 SoC peripherals include 4 × USB 2.0, 2 × SATA, 2 × Integrated GbE LAN, 2 × UART, and 8 lanes of PCI Express 2.0, in x8, x4, x2, and x1 configurations.
- C2750 SoC peripherals include 4 × USB 2.0, 6 × SATA, 4 × Integrated GbE LAN, 2 × UART, and 16 lanes of PCI Express 2.0, in x16, x8, x4, x2, and x1 configurations.
- Package size: 34 mm × 28 mm

- Die size: 107 mm²

Model	sSpec number	Cores	Clock rate	GPU frequency	L2 cache	I/O bus	Memory	Voltage	TDP	Socket	Release date	Part number(s)	Release price (USD)
Atom C2350 (https://ark.intel.com/content/www/us/en/ark/products/77977.html)	SR1CV (B0) SR3GU (C0)	2	1.7-2.0 GHz	—	1 MB	4 × PCIe 2.0	DDR3/3L-1333		6 W	FC-BGA 1283	September 2013	FH8065401488914 FH8065403552901	\$43
Atom C2530 (https://ark.intel.com/content/www/us/en/ark/products/77980.html)	SR1CU (B0) SR3GT (C0)	4	1.7-2.0 GHz	—	2 × 1 MB	8 × PCIe 2.0	DDR3/3L-1333		9 W	FC-BGA 1283	September 2013	FH8065401488915 FH8065403552801	\$70
Atom C2550 (https://ark.intel.com/content/www/us/en/ark/products/77982.html)	SR1CT (B0) SR3GS (C0)	4	2.4-2.6 GHz	—	2 × 1 MB	8 × PCIe 2.0	DDR3/3L-1600		14 W	FC-BGA 1283	September 2013	FH8065401488912 FH8065403552700	\$86
Atom C2730 (https://ark.intel.com/content/www/us/en/ark/products/77985.html)	SR1CR (B0) SR3GQ (C0)	8	1.7-2.0 GHz	—	4 × 1 MB	8 × PCIe 2.0	DDR3/3L-1333		12 W	FC-BGA 1283	September 2013	FH8065401488919 FH8065403552500	\$150
Atom C2750 (https://ark.intel.com/content/www/us/en/ark/products/77987.html)	SR1CS (B0) SR3GR (C0)	8	2.4-2.6 GHz	—	4 × 1 MB	16 × PCIe 2.0	DDR3/3L-1600		20 W	FC-BGA 1283	September 2013	FH8065401488906 FH8065403552600	\$171

"Rangeley" (22 nm)

- All models support: MMX, SSE, SSE2, SSE3, SSSE3, SSE4.1, SSE4.2, Enhanced Intel SpeedStep Technology (EIST), Intel Turbo Boost, Intel 64, XD bit (an NX bit implementation), Intel VT-x, AES-NI, ECC memory.
- All models except C2x38 support *Intel QuickAssist Technology* (QAT, cryptography accelerator)
- SoC peripherals include 4 × USB 2.0, 4-6 × SATA (1 for C2308, 2 for C2316, C2508, C2516), 4 × Integrated GbE LAN (2 for C2316), 2 × UART, and 8-16 lanes of PCI Express 2.0 (4 lanes for C2308), in x16, x8, x4, x2, and x1 configurations.
- Package size: 34 mm × 28 mm

Model	sSpec number	Cores	Clock rate	GPU frequency	L2 cache	I/O bus	Memory	Voltage	TDP	Socket	Release date	Part number(s)	Release price (USD)
Atom C2308 (https://ark.intel.com/content/www/us/en/ark/products/81328.html)	SR1UN (B0) SR3H3 (C0)	2	1.25 GHz	—	1 MB	4 × PCIe 2.0	DDR3-1333		6 W	FC-BGA 1283	March 2014	FH8065501516754 FH8065503553800	\$60
Atom C2316 (https://ark.intel.com/content/www/us/en/ark/products/123003.html)	SR3JU (C0)	2	1.5 GHz	—	1 MB	8 × PCIe 2.0	DDR3-1333		7 W	FC-BGA 1283	July 2017	FH8065503680000	\$39
Atom C2338 (https://ark.intel.com/content/www/us/en/ark/products/77976.html)	SR1S8 (B0) SR3H2 (C0)	2	1.7-2.0 GHz	—	1 MB	8 × PCIe 2.0	DDR3/3L-1333		7 W	FC-BGA 1283	September 2013	FH8065501516761 FH8065503553701	\$60
Atom C2358 (https://ark.intel.com/content/www/us/en/ark/products/77978.html)	SR1D2 (B0) SR3H1 (C0)	2	1.7-2.0 GHz	—	1 MB	8 × PCIe 2.0	DDR3/3L-1333		7 W	FC-BGA 1283	September 2013	FH8065501516711 FH8065503553601	\$60
Atom C2508 (https://ark.intel.com/content/www/us/en/ark/products/81270.html)	SR1VV (B0) SR3H4 (C0)	4	1.25 GHz	—	2 × 1 MB	8 × PCIe 2.0	DDR3-1333		9.5 W	FC-BGA 1283	March 2014	FH8065501516768 FH8065503554000	\$98
Atom C2516 (https://ark.intel.com/content/www/us/en/ark/products/123004.html)	SR3JV (C0)	4	1.4 GHz	—	2 × 1 MB	8 × PCIe 2.0	DDR3-1333		10 W	FC-BGA 1283	July 2017	FH8065503680100	\$64
Atom C2518 (https://ark.intel.com/content/www/us/en/ark/products/77979.html)	SR1D1 (B0) SR3H0 (C0)	4	1.70 GHz	—	2 × 1 MB	16 × PCIe 2.0	DDR3/3L-1333		13 W	FC-BGA 1283	September 2013	FH8065501516710 FH8065503553501	\$91
Atom C2538 (https://ark.intel.com/content/www/us/en/ark/products/77981.html)	SR1S9 (B0) SR3GZ (C0)	4	2.40 GHz	—	2 × 1 MB	16 × PCIe 2.0	DDR3/3L-1600		15 W	FC-BGA 1283	September 2013	FH8065501516762 FH8065503553400	\$104
Atom C2558 (https://ark.intel.com/content/www/us/en/ark/products/)	SR1CZ (B0) SR3GX (C0)	4	2.4 GHz	—	2 × 1 MB	16 × PCIe 2.0	DDR3/3L-1600		15 W	FC-BGA 1283	September 2013	FH8065501516709 FH8065503553200	\$104

77983.html)													
Atom C2718 (https://ark.intel.com/content/www/us/en/ark/products/77984.html)	SR1CY (B0) SR3GY (C0)	8	2.0 GHz	—	4 × 1 MB	16 × PCIe 2.0	DDR3/3L-1333		18 W	FC-BGA 1283	September 2013	FH8065501516708 FH8065503553300	\$182
Atom C2738 (https://ark.intel.com/content/www/us/en/ark/products/77986.html)	SR1SA (B0) SR3GW (C0)	8	2.4 GHz	—	4 × 1 MB	16 × PCIe 2.0	DDR3/3L-1600		20 W	FC-BGA 1283	September 2013	FH8065501516763 FH8065503553100	\$208
Atom C2758 (https://ark.intel.com/content/www/us/en/ark/products/77988.html)	SR1CW (B0) SR3GV (C0)	8	2.4 GHz	—	4 × 1 MB	16 × PCIe 2.0	DDR3/3L-1600		20 W	FC-BGA 1283	September 2013	FH8065501516702 FH8065503553000	\$208

Goldmont microarchitecture

"Denverton" (14 nm)

- All models support: MMX, SSE, SSE2, SSE3, SSSE3, SSE4.1, SSE4.2, Enhanced Intel SpeedStep Technology (EIST), Intel Turbo Boost (dual-core, C3xx0, C3xx5 only), Intel 64, XD bit (an NX bit implementation), Intel VT-x, Intel VT-d, AES-NI, ECC memory.
- SoC peripherals include 8–16 × USB 3.0, 6–16 × SATA, 4 × Integrated 1GbE, 2.5GbE, and 10GbE (C3538 and up) LAN, and up to 20 lanes of PCI Express 3.0, in x8, x4, and x2 configurations.
- Package size: 34 mm × 28 mm

Model	sSpec number	Cores	Clock rate	GPU frequency	L2 cache	I/O bus	Memory	Voltage	TDP	Socket	Release date	Part number(s)	Release price (USD)
Atom C3308 (https://ark.intel.com/content/www/us/en/ark/products/97935.html)	SR38D (B1)	2	1.6-2.1 GHz	—	4 MB	6 × PCIe 3.0	1 × DDR4-1866 1 × DDR3L-1600		9.5 W	FC-BGA 1310	August 2017	HW8076502639802	\$32
Atom C3336 (https://ark.intel.com/content/www/us/en/ark/products/184994.html)	SRCZL (B1)	2	1.5 GHz	—	4 MB	10 × PCIe 3.0	1 × DDR4-1866 1 × DDR3L-1600		11 W	FC-BGA 1310	September 2018	HW8076504087602	\$36
Atom C3338 (https://ark.intel.com/content/www/us/en/ark/products/97928.html)	SR36E (B0) SR38B (B1)	2	1.5-2.2 GHz	—	4 MB	10 × PCIe 3.0	1 × DDR4-1866 1 × DDR3L-1600		8.5 W	FC-BGA 1310	January 2017	HW8076502639602	\$27
Atom C3338R (https://ark.intel.com/content/www/us/en/ark/products/204839.html)	SRH4E (B1)	2	1.8-2.2 GHz	—	4 MB	10 × PCIe 3.0	1 × DDR4-1866		10.5 W	FC-BGA 1310	May 2020	HW8076504489901	\$37
Atom C3436L (https://ark.intel.com/content/www/us/en/ark/products/204842.html)	SRJQN (B1)	4	1.3 GHz	—	8 MB	10 × PCIe 3.0	1 × DDR4-1866		10.75 W	FC-BGA 1310	May 2020	HW8076504511101	\$64
Atom C3508 (https://ark.intel.com/content/www/us/en/ark/products/97930.html)	SR3JX (B1)	4	1.6 GHz	—	8 MB	8 × PCIe 3.0	2 × DDR4-1866 2 × DDR3L-1600		11.5 W	FC-BGA 1310	August 2017	HW8076503693501	\$86
Atom C3538 (https://ark.intel.com/content/www/us/en/ark/products/97929.html)	SR3L7 (B1)	4	2.1 GHz	—	8 MB	12 × PCIe 3.0	2 × DDR4-2133 2 × DDR3L-1600		15 W	FC-BGA 1310	August 2017	HW8076502444301	\$75
Atom C3558 (https://ark.intel.com/content/www/us/en/ark/products/97937.html)	SR388 (B1)	4	2.2 GHz	—	8 MB	12 × PCIe 3.0	2 × DDR4-2133 2 × DDR3L-1600		16 W	FC-BGA 1310	August 2017	HW8076502639302	\$86
Atom C3558R (https://ark.intel.com/content/www)	SRH4G (B1)	4	2.4 GHz	—	8 MB	20 × PCIe 3.0	2 × DDR4-2400		17 W	FC-BGA 1310	May 2020	HW8076504490101	\$96

w/us/en/ ark/prod ucts/204 841.htm l													
Atom C3708 (https://a rk.intel.c om/cont ent/ww w/us/en/ ark/prod ucts/979 34.html)	SR38F (B1)	8	1.7 GHz	—	16 MB	16 × PCIe 3.0	2 × DDR4-2133 2 × DDR3L-1600		17 W	FC-BGA 1310	August 2017	HW8076502640002	\$209
Atom C3750 (https://a rk.intel.c om/cont ent/ww w/us/en/ ark/prod ucts/979 38.html)	SR385 (B1)	8	2.2-2.4 GHz	—	16 MB	12 × PCIe 3.0	2 × DDR4-2133 2 × DDR3L-1600		21 W	FC-BGA 1310	August 2017	HW8076502639002	\$171
Atom C3758 (https://a rk.intel.c om/cont ent/ww w/us/en/ ark/prod ucts/979 26.html)	SR389 (B1)	8	2.2 GHz	—	16 MB	16 × PCIe 3.0	2 × DDR4-2400 2 × DDR3L-1600		25 W	FC-BGA 1310	August 2017	HW8076502639402	\$193
Atom C3758R (https://a rk.intel.c om/cont ent/ww w/us/en/ ark/prod ucts/204 840.htm l)	SRH4F (B1)	8	2.4 GHz	—	16 MB	20 × PCIe 3.0	2 × DDR4-2400		26 W	FC-BGA 1310	May 2020	HW8076504490001	\$209
Atom C3808 (https://a rk.intel.c om/cont ent/ww w/us/en/ ark/prod ucts/979 39.html)	SR38C (B1)	12	2.0 GHz	—	12 MB	16 × PCIe 3.0	2 × DDR4-2133 2 × DDR3L-1600		25 W	FC-BGA 1310	August 2017	HW8076502639702	\$369
Atom C3830 (https://a rk.intel.c om/cont ent/ww w/us/en/ ark/prod ucts/979 31.html)	SR386 (B1)	12	1.9-2.3 GHz	—	12 MB	12 × PCIe 3.0	2 × DDR4-2133 2 × DDR3L-1600		21 W	FC-BGA 1310	August 2017	HW8076502639101	\$289
Atom C3850 (https://a rk.intel.c om/cont ent/ww w/us/en/ ark/prod ucts/979 32.html)	SR387 (B1)	12	2.1-2.4 GHz	—	12 MB	16 × PCIe 3.0	2 × DDR4-2400 2 × DDR3L-1600		25 W	FC-BGA 1310	August 2017	HW8076502639201	\$323
Atom C3858 (https://a rk.intel.c om/cont ent/ww w/us/en/ ark/prod ucts/979 36.html)	SR38A (B1)	12	2.0 GHz	—	12 MB	16 × PCIe 3.0	2 × DDR4-2400 2 × DDR3L-1600		25 W	FC-BGA 1310	August 2017	HW8076502639501	\$332
Atom C3950 (https://a rk.intel.c om/cont ent/ww w/us/en/	SR383 (B1)	16	1.7-2.2 GHz	—	16 MB	16 × PCIe 3.0	2 × DDR4-2400 2 × DDR3L-1600		24 W	FC-BGA 1310	August 2017	HW8076502638901	\$389

ark/products/97940.html													
Atom C3955 (https://ark.intel.com/content/www/us/en/ark/products/97933.html)	SR3F3 (B1)	16	2.1-2.4 GHz	—	16 MB	16 × PCIe 3.0	2 × DDR4-2400 2 × DDR3L-1600		32 W	FC-BGA 1310	August 2017	HW8076503528301	\$434
Atom C3958 (https://ark.intel.com/content/www/us/en/ark/products/97927.html)	SR381 (B1)	16	2.0 GHz	—	16 MB	16 × PCIe 3.0	2 × DDR4-2400 2 × DDR3L-1600		31 W	FC-BGA 1310	August 2017	HW8076502444202	\$449

Tremont microarchitecture

"Snow Ridge" (10 nm)

- All models support: MMX, SSE, SSE2, SSE3, SSSE3, SSE4.1, SSE4.2, Intel 64, XD bit (an NX bit implementation), Intel VT-x, AES-NI, ECC memory.
- Same frequency for all models: 2.2 GHz. L2 cache: 4.5 MB per module; each module comprises four CPU cores.
- SoC peripherals include 4 × USB 3.0, 4 × USB 2.0, 16 × SATA, Integrated Intel Ethernet 800 series 100 Gbit/s LAN, 3 × UART, and up to 32 lanes of PCI Express (16 × 2.0, 16 × 3.0), in x16, x8, and x4 configurations.
- Intel Dynamic Load Balancer (Intel DLB) & Intel QuickAssist Technology (Intel QAT)^[14]
- P####B models are designed for base transceiver stations, especially that for 5G networks. All other models are designed for communications (extended temperature range).
- Package size: 47.5 mm × 47.5 mm

Model	sSpec number	Cores	Clock rate	GPU frequency	L2 cache	I/O bus	Memory	Voltage	TDP	Socket	Release date	Part number(s)	Release price (USD)
Atom P5322 (https://ark.intel.com/content/www/us/en/ark/products/134797.html)	SRL3R (C0)	8	2.2 GHz	—	9 MB	16 × PCIe 2.0 16 × PCIe 3.0	2 × DDR4-2400		55 W		June 2022	NN8069204099502	\$352
Atom P5332 (https://ark.intel.com/content/www/us/en/ark/products/134796.html)	SRL3S (C0)	12	2.2 GHz	—	13.5 MB	16 × PCIe 2.0 16 × PCIe 3.0	2 × DDR4-2400		61 W		June 2022	NN8069204099603	\$448
Atom P5342 (https://ark.intel.com/content/www/us/en/ark/products/134795.html)	SRL3T (C0)	16	2.2 GHz	—	18 MB	16 × PCIe 2.0 16 × PCIe 3.0	2 × DDR4-2667		71 W		June 2022	NN8069204099703	\$632
Atom P5352 (https://ark.intel.com/content/www/us/en/ark/products/134794.html)	SRL3U (C0)	20	2.2 GHz	—	22.5 MB	16 × PCIe 2.0 16 × PCIe 3.0	2 × DDR4-2933		78 W		June 2022	NN8069204099802	\$654
Atom P5362 (https://ark.intel.com/content/www/us/en/ark/products/134793.html)	SRL3V (C0)	24	2.2 GHz	—	27 MB	16 × PCIe 2.0 16 × PCIe 3.0	2 × DDR4-2933		83 W		June 2022	NN8069204099904	\$708
Atom P5721 (https://ark.intel.com/content/www/us/en/ark/products/229361.html)	SRL7K (C0)	8	2.2 GHz	—	9 MB	16 × PCIe 2.0 16 × PCIe 3.0	2 × DDR4-2933		48 W		June 2022	NN8069204099002	\$392
Atom P5731 (https://ark.intel.com/content/www/us/en/ark/products/229363.html)	SRL7L (C0)	12	2.2 GHz	—	13.5 MB	16 × PCIe 2.0 16 × PCIe 3.0	2 × DDR4-2933		54.5 W		June 2022	NN8069204099102	\$561
Atom P5742 (https://ark.intel.com/content/www/us/en/ark/products/229360.html)	SRL7M (C0)	16	2.2 GHz	—	18 MB	16 × PCIe 2.0 16 × PCIe 3.0	2 × DDR4-2933		67 W		June 2022	NN8069204099202	\$752
Atom P5752 (https://ark.intel.com/content/www/us/en/ark/products/229362.html)	SRL7N (C0)	20	2.2 GHz	—	22.5 MB	16 × PCIe 2.0 16 × PCIe 3.0	2 × DDR4-2933		74.5 W		June 2022	NN8069204099302	\$763
Atom P5921B (https://ark.intel.com/content/www/us/en/ark/products/202684.html)		8	2.2 GHz	—	9 MB	16 × PCIe 2.0 16 × PCIe 3.0	1 × DDR4-2933				February 2020		
Atom P5931B (https://ark.intel.com/content/www/us/en/ark/products/202681.html)		12	2.2 GHz	—	13.5 MB	16 × PCIe 2.0 16 × PCIe 3.0	2 × DDR4-2933				February 2020		

Atom P5942B (https://ark.intel.com/content/www/us/en/ark/products/202685.html)	16	2.2 GHz	—	18 MB	16 × PCIe 2.0 16 × PCIe 3.0	2 × DDR4-2933					February 2020		
Atom P5962B (https://ark.intel.com/content/www/us/en/ark/products/202682.html)	24	2.2 GHz	—	27 MB	16 × PCIe 2.0 16 × PCIe 3.0	2 × DDR4-2933					February 2020		

"Parker Ridge" (10 nm)

- All models support: MMX, SSE, SSE2, SSE3, SSSE3, SSE4.1, SSE4.2, Intel 64, XD bit (an NX bit implementation), Intel VT-x, AES-NI, ECC memory.
- SoC peripherals include 4 × USB 3.0, 4 × USB 2.0, 16 × SATA, Integrated Intel Ethernet 800 series 100 Gbit/s LAN (except 51xx model numbers), 3 × UART, and up to 32 lanes of PCI Express (16 × 2.0, 16 × 3.0), in x16, x8, and x4 configurations.
- Intel Dynamic Load Balancer (Intel DLB) & Intel QuickAssist Technology (Intel QAT)^[14]
- Model numbers ending in 0 are extended temperature range; model numbers ending in 5 are commercial temperature range.
- Package size: 47.5 mm × 47.5 mm

Model	sSpec number	Cores	Clock rate	GPU frequency	L2 cache	I/O bus	Memory	Voltage	TDP	Socket	Release date	Part number(s)	Release price (USD)
Atom C5115 (https://ark.intel.com/content/www/us/en/ark/products/134803.html)	SRL41 (C0)	4	2.8 GHz	—	9 MB	16 × PCIe 2.0 16 × PCIe 3.0	2 × DDR4-2933		43 W		June 2022	NN8071904626411	\$213
Atom C5125 (https://ark.intel.com/content/www/us/en/ark/products/134802.html)	SRL40 (C0)	8	2.8 GHz	—	9 MB	16 × PCIe 2.0 16 × PCIe 3.0	2 × DDR4-2933		50 W		June 2022	NN8071904626418	\$299
Atom C5310 (https://ark.intel.com/content/www/us/en/ark/products/134801.html)	SRL3Z (C0)	4	1.6 GHz	—	9 MB	12 × PCIe 3.0	2 × DDR4-2400		32 W		June 2022	NN8071904626417	\$213
Atom C5315 (https://ark.intel.com/content/www/us/en/ark/products/134800.html)	SRL3Y (C0)	4	2.4 GHz	—	9 MB	12 × PCIe 3.0	2 × DDR4-2400		38 W		June 2022	NN8071904626414	\$213
Atom C5320 (https://ark.intel.com/content/www/us/en/ark/products/134799.html)	SRL3X (C0)	8	2.4 GHz	—	9 MB	16 × PCIe 3.0	2 × DDR4-2933		41 W		June 2022	NN8071904626416	\$320
Atom C5325 (https://ark.intel.com/content/www/us/en/ark/products/134798.html)	SRL3W (C0)	8	2.4 GHz	—	9 MB	16 × PCIe 3.0	2 × DDR4-2933		41 W		June 2022	NN8071904626413	\$299

CE SoCs

Single-core CE SoCs

"Sodaville" (45 nm)

[15]

- Package size: 27 mm × 27 mm

- GPU (based on the PowerVR SGX535 from Imagination Technologies)

Model	sSpec number	Cores	Clock rate	GPU frequency	L2 cache	I/O bus	Memory	Voltage	TDP	Socket	Release date	Part number(s)	Release price (USD)
Atom CE4105	SLJDS		800 MHz	400 MHz	512 KB					FC-BGA 951		CLCE4105S4	
Atom CE4110	SLH8H SLHAP SLHBS SLJQ8 SLJQC SLJQG SLH8N SLHAQ		1200 MHz	200 MHz	512 KB				7 W	FC-BGA 951	September 24, 2009	CLCE4110S2 CLCE4110ES2 CLCE4110DS2 CLCE4110ES4 CLCE4110S4 CLCE4110EDS1 CLCE4110DS2 CLCE4110EDS2	
Atom CE4130	SLJ4T		1200 MHz	200 MHz	512 KB				7 W	FC-BGA 951		CLCE4130ES1	
Atom CE4150	SLH8L SLHAR SLJDT SLJQB SLJTJ SLHAS SLH8T SLH78		1200 MHz	400 MHz	512 KB				7 W	FC-BGA 951		CLCE4150EDS3 CLCE4150S2 CLCE4150EDS4 CLCE4150S4 CLCE4150S4 CLCE4150DS2 CLCE4150EDS3 CLCE4150ES4	
Atom CE4157	SLJJ4		1200 MHz	400 MHz	512 KB					FC-BGA 951		CLCE4157DS2	
Atom CE4160	SLJ2N		1600 MHz	400 MHz	512 KB					FC-BGA 951		CLCE4160DS2	
Atom CE4170			1600 MHz	400 MHz	512 KB					FC-BGA 951			
Atom CE4177	SLHBU		1600 MHz	400 MHz	512 KB					FC-BGA 951		CLCE4177S2	

"Groveland" (45 nm)

CE4200^[16]

- Package size: ?? mm × ?? mm
- 2 × 32-bit memory channels, up to DDR2-800
- GPU (based on the PowerVR SGX535 from Imagination Technologies)

Model	sSpec number	Cores	Clock rate	GPU frequency	L2 cache	I/O bus	Memory	Voltage	TDP	Socket	Release date	Part number(s)	Release price (USD)
Atom CE4215	SLJKD		1200 MHz	—	512 KB		2 × DDR2-800		7 W	FC-BGA 1283		CLCE4215S0	
Atom CE4235	SLJEU SLJGA SLJL6 SLJNJ SLJNQ SLKAP SLKBG SLKCD		1200 MHz	—	512 KB		2 × DDR2-800		7 W	FC-BGA 1283		CLCE4235EDS4 CLCE4235DS4 CLCE4235DS4 CLCE4235EDS4 CLCE4235DS4 CLCE4235DS4 CLCE4235EDS4 CLCE4235DS4	
Atom CE4253	SLJNN SLJNS (D0) SLJS8 SLK9G (E0) SLK9K SLKEC		1200 MHz	400 MHz	512 KB		2 × DDR2-800		7 W	FC-BGA 1283		CLCE4253ES4 CLCE4253EDS1 CLCE4253ES4 CLCE4253EDS1 CLCE4253ES4 CLCE4253EDS1	
Atom CE4255	SLJTK SLK9F SLJD7 SLJG5		1200 MHz	—	512 KB		2 × DDR2-800		7 W	FC-BGA 1283		CLCE4255DS4 CLCE4255DS4 CLCE4255EDS1 CLCE4255S0	
Atom CE4257	SLJJT SLJKN SLK7S SLK9L SLKCL SLJD4		1200 MHz	—	512 KB		2 × DDR2-800		7 W	FC-BGA 1283		CLCE4257ES1 CLCE4257S0 CLCE4257E4 CLCE4257S0 CLCE4257E4 CLCE4257EDS0	
Atom CE4270	SLJFA		1600 MHz	—	512 KB		2 × DDR2-800		7 W	FC-BGA 1283		CLCE4270S0	
Atom CE4275	SLJD5 SLJNH SLK4E SLJD8		1600 MHz	—	512 KB		2 × DDR2-800		7 W	FC-BGA 1283		CLCE4275EDS0 CLCE4275EDS0 CLCE4275EDS0 CLCE4275S0	
Atom CE4277	SLKCQ (E0) SLKEB (E0) SLJF9		1600 MHz	—	512 KB		2 × DDR2-800		7 W	FC-BGA 1283		CLCE4277EDS0 CLCE4277EDS0 CLCE4277S0	

Dual-Core CE SoCs

"Berryville" (32 nm)

[17][18][19]

- Package size: ?? mm × ?? mm
- GPU for 3D (based on the PowerVR SGX545 from Imagination Technologies)
- GPU for 2D (GC300 (<http://www.vivantecorp.com/en/technology/composition.html>) Archived (<https://web.archive.org/web/20141024064847/http://www.vivantecorp.com/en/technology/composition.html>) 2014-10-24 at the [Wayback Machine](http://www.waybackmachine.org/) from Vivante)

Model	sSpec number	Cores	Clock rate	GPU frequency	L2 cache	I/O bus	Memory	Voltage	TDP	Socket	Release date	Part number(s)	Release price (USD)
Atom CE5310	SR0UD SR10Z SR11A SR1ZE SR22B		1200 MHz	? MHz	512		DDR3-1600					DHCE5310S4 DHCE5310ES4 DHCE5310S5 DHCE5310DS5 DHCE5310DS4	
Atom CE5315	SR0UE SR10W SR112 SR119 SR141 SR1RF SR1ZC SR22C		1200 MHz	? MHz			DDR3-1600		10–15 W			DHCE5315S4 DHCE5315EDS4 DHCE5315EDS4 DHCE5315S5 DHCE5315S4 DHCE5315DS5 DHCE5315DS5 DHCE5315S4	
Atom CE5318			1200 MHz	? MHz			DDR3-1600						
Atom CE5320			1200 MHz	? MHz			DDR3-1600						
Atom CE5328			1200 MHz	? MHz			DDR3-1600						
Atom CE5335	SR0UC SR1HG SR1ZB SR1ZD SR1ZF		1600 MHz	? MHz	512		DDR3-1600					DHCE5335S4 DHCE5335S5 DHCE5335EDS4 DHCE5335DS5 DHCE5335S5	
Atom CE5338			1800 MHz	? MHz			DDR3-1600						
Atom CE5343			1800 MHz	? MHz			DDR3-1600						
Atom CE5348			1800 MHz	? MHz			DDR3-1600						

See also

- Atom (system on chip)
- Comparison of Intel processors
- List of Intel Celeron microprocessors
- Intel GMA
- Stealey (A100/A110)
- Geode (processor)
- VIA Nano
- Intel Quark
- Intel Edison

References

- "Intel® Atom™ Processor D400 and D500 Series Datasheet- Volume One" (<https://www.intel.com/content/dam/www/public/us/en/documents/datasheets/atom-d400-d500-vol-1-datasheet.pdf>) (PDF). *Intel*.
- "Data sheet" (<https://www.intel.ca/content/dam/doc/datasheet/atom-d2000-n2000-vol-1-datasheet.pdf>) (PDF). *Intel*.
- Intel (February 3, 2014). "Product Change Notification #112810 - 00" (<https://qdms.intel.com/dm/i.aspx/010BC5E0-A509-4872-AFD5-40A313B3B613/PCN112810-00.pdf>) (PDF). Intel.com. Retrieved April 5, 2015.
- "Data sheet" (<https://www.intel.com/content/dam/www/public/us/en/documents/datasheets/atom-n400-vol-1-datasheet-.pdf>) (PDF). *Intel*.
- "Data sheet" (<https://www.intel.com/content/dam/www/public/us/en/documents/datasheets/atom-z6xx-datasheet.pdf>) (PDF). *Intel*.
- "Intel shows budget Android phone powering big-screen Linux • The Register" (https://www.theregister.co.uk/2016/02/23/move_over_continuum_intel_shows_android_smartphone_powering_bigscreen_linux/). *The Register*.
- Rockchip#Tablet processors with integrated modem
- Data sheet (<https://www-ssl.intel.com/content/dam/www/public/us/en/documents/product-briefs/atom-z2760-datasheet.pdf>) Intel
- Data sheet (<https://www.intel.com/content/dam/www/public/us/en/documents/datasheets/atom-z36xxx-z37xxx-datasheet-vol-1.pdf>) Intel
- "What exactly is VT-x2?" (<https://software.intel.com/en-us/forums/topic/297516>). Software.intel.com. March 30, 2009. Retrieved April 22, 2016.
- Virtualization technology (<http://www.intel.com/content/dam/www/public/us/en/documents/white-papers/virtualization-enabling-intel-virtualization-technology-features-and-benefits-paper.pdf>) Intel
- "Intel Atom Processor Z8000 Series Datasheet, Vol. 1" (<https://www-ssl.intel.com/content/www/us/en/processors/atom/atom-z8000-datasheet-vol-1.html>). Ssl.intel.com. Retrieved April 22, 2016.
- "amston lake intel ark" (<https://www.intel.com/content/www/us/en/ark/products/codename/235968/products-formerly-amston-lake.html>).
- "Intel® QuickAssist Technology (Intel® QAT) Improves Data Center" (<https://www.intel.com/content/www/us/en/architecture-and-technology/intel-quick-assist-technology-overview.html>). Intel.com. Retrieved March 17, 2022.
- "Intel Atom Processor CE4100 Product Brief" (http://www.wpgholdings.com/epaper/US/newsRelease_20091215/255874.pdf) (PDF). Retrieved March 27, 2024.

16. "Intel Unveils Atom CE4200, Atom E600 Processors and IntelAppUp | TechHail" (<https://www.techhail.org/computers/intel-unveils-atom-ce4200-and-atom-e600-processors-also-launches-intel-appup-centre/7374>). *www.techhail.org*. September 16, 2010.
17. "New Choices for Consumers with Intel Silicon in Set-Top Boxes and Media Gateways" (<https://web.archive.org/web/20160402124757/http://scoop.intel.com/new-choices-for-consumers-with-intel-silicon-in-set-top-boxes-and-media-gateways/>). Archived from the original (<https://scoop.intel.com/new-choices-for-consumers-with-intel-silicon-in-set-top-boxes-and-media-gateways/>) on April 2, 2016. Retrieved January 28, 2013.
18. "Intel's Berryville Atom CE processors revealed" (<http://vr-zone.com/articles/intels-berryville-atom-ce-processors-revealed/14756.html>). Retrieved March 27, 2024.
19. "Intel launches new CE5300 series media processors" (https://www.cpu-world.com/news_2013/2013030501_Intel_launches_new_CE5300_series_media_processors.html). *www.cpu-world.com*.

External links

- Intel Atom Processor - Overview (<http://www.intel.com/products/processor/atom/>)
- SSPEC/QDF Reference (<http://ark.intel.com/sspecqdf.aspx>) (Intel)
- Intel Corporation - Processor Price List (<https://web.archive.org/web/20141104224122/http://www.intc.com/pricelist.cfm>)
- Intel Atom and VIA Nano performance compared (<https://web.archive.org/web/20100113222026/http://pcper.com/article.php?aid=597>)
- Intel CPU Transition Roadmap 2008-2013 (<http://pc.watch.impress.co.jp/img/pcw/docs/360/112/html/1.jpg.html>)
- Intel Desktop CPU Roadmap 2004-2011 (<http://pc.watch.impress.co.jp/img/pcw/docs/360/112/html/2.jpg.html>)

Retrieved from "https://en.wikipedia.org/w/index.php?title=List_of_Intel_Atom_processors&oldid=1296742711"