

Tentative

Ver.: 0.11

LTPS LCD Specification

Model Name: TD015THEB2

Customer Signature
Date

This technical specification is subjected to change without notice

The information contained herein is the exclusive property of toppoly Optoelectronics corporation, and shall not be distributed, reproduced, or disclosed in whole or in part without prior written permission of toppoly Optoelectronics corporation.

Table of Contents

NO.	Item	Page
	Cover Sheet	1
	Table of Contents	2
	Record of Revision	3
1	Features	4
2	General Specifications	4
3	Input / Output Terminals	5
4	Absolute Maximum Ratings	7
5	Electrical Characteristics	8
6	Timing Chart	9
7	Power on/off sequence	18
8	Optical Characteristics	19
9	Reliability	22
10	Handling Cautions	23
11	Mechanical Drawing	24
12	Packing Drawing	25

1. FEATURES

The 1.5" LCD module is the active matrix color TFT LCD module. LTPS (Low Temperature Poly Silicon) TFT technology is applied with vertical and horizontal drivers built on the panel.

Both of horizontal and vertical scan are reversible and controlled by the serial interface commands.

The product is designed for the requirement of the green product, and the specification complies with Toppoly's "Green Product Chemical Substance Specification Standard Hand Book".

2. GENERAL SPECIFICATIONS

Item	Description	Unit
Display Size (Diagonal)	1.5	Inch (cm)
Display Type	Transmissive	-
Active Area (HxV)	29.791x22.32	mm
Number of Dots (HxV)	480 x 240	Dot
Dot Pitch (HxV)	0.0625 x 0.938	mm
Color Arrangement	RGB Delta	-
Color Numbers	16Million	-
Outline Dimension (HxVxT)	37.1x32.7x2.5*	mm
Weight	4.5	G
Panel surface treatment	Hard Coating(3H)	-

*Exclude FPC and protrusions.

3. INPUT/OUTPUT TERMINALS

3.1 TFT LCD Panel

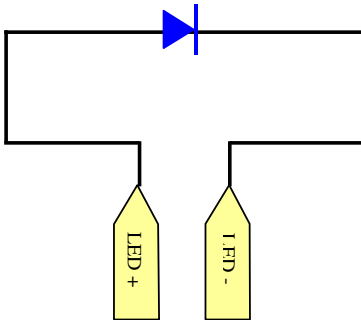
Recommend connector:

Compatible with Molex 51374 – 4073

Pin	Symbol	I/O	Description	Remark
1	CP3	C	Capacitor for power setting	
2	CP4	C	Capacitor for power setting	
3	CP5	C	Capacitor for charge pump	
4	CP6	C	Capacitor for charge pump	
5	CP7	C	Capacitor for charge pump	
6	CP8	C	Capacitor for charge pump	
7	NC	--	No connection	
8	PCDL	C	Capacitor for pre-charge data signal low	
9	PCDH	C	Capacitor for pre-charge data signal high	
10	VCOML	C	Capacitor for VCOM low	
11	VCOMH	C	Capacitor for VCOM high	
12	AGND	--	Analog ground	
13	PVDD	C	Regulation capacitor for charge pump	
14	AVDD	C	Regulation capacitor for analog voltage	
15	CP1	C	Capacitor for charge pump	
16	CP2	C	Capacitor for charge pump	
17	PWM	O	Power transistor gate signal for the boost converter	
18	FB	I	Main boost regulator feedback input	
19	LED-	--	LED power: cathode	Note 3-1
20	NC	--	No connection	
21	NC	--	No connection	
22	LED+	--	LED power: anode	
23	GND	--	Ground	
24	VCC	--	Power supply for digital circuit and charge pump circuit	
25	VD	I	Vertical sync input. Negative polarity	
26	HD	I	Horizontal sync input. Negative polarity	
27	DCLK	I	Clock signal, latch data onto line latches at the rising edge	
28	DIN0	I	Data input	
29	DIN1	I	Data input	
30	DIN2	I	Data input	
31	DIN3	I	Data input	
32	DIN4	I	Data input	

33	DIN5	I	Data input	
34	DIN6	I	Data input	
35	DIN7	I	Data input	
36	SDA	I/O	Serial interface data line	
37	SCL	I	Serial interface clock line	
38	SCEN	I	Serial interface chip enable line	
39	nSTBY	I	Sleep mode setting pin	Note 3-2
40	nRESET	I	System reset pin	

Note 3-1: The figure below shows the connection of backlight LED.



Note 3-2: Pin 39: nSTBY

Pull High: Sleep mode is controlled by register setting. (address: 0x04)

Pull Low : Panel is in sleep mode

4. ABSOLUTE MAXIMUM RATINGS

Ta = 25°C

Item	Symbol	MIN	MAX	Unit	Remark
Power Supply Voltage	V _{CC}	-0.5	4.5	V	
Input Signal Voltage	V _{IN1}	0	V _{CC}	V	VD, HD, DCLK, DIN[0:7], SDA, SCL, SCEN, SHDB, GRESTD
Back Light Forward Current	I _F	--	27	mA	
Operating Temperature	T _{OPR}	-10	+60	°C	
Storage Temperature	T _{STG}	-30	+80	°C	

5. ELECTRICAL CHARACTERISTICS
5.1 Driving TFT LCD Panel

GND=0V, Ta=25°C

Item	Symbol	MIN	TYP	MAX	Unit	Remark
Power Supply Voltage	V _{CC}	2.85	3.0	3.6	V	Note 5-1
Input Signal Voltage	Low Level	V _{IL}	GND	-	0.2x V _{CC} *	VD, HD, DCLK, DIN[0:7], SDA, SCL, SCEN, SHDB, GRESTD
	High Level	V _{IH}	0.8x V _{CC} *	-	V _{CC} *	
PWM Output Voltage	V _{PWM}	0	-	V _{CC} *	V	
Feedback Voltage	V _{FB}	0.55	0.6	0.65	V	Note 5-2
Panel Power Consumption	W _P	-	TBD	TBD	mW	

 V_{CC}* =V_{CC}(TYP)

 Note 5-1: The V_{CC} power is provided for overall panel module supply voltage.

Note 5-2: DC/DC feedback control voltage

5.2 Driving Backlight

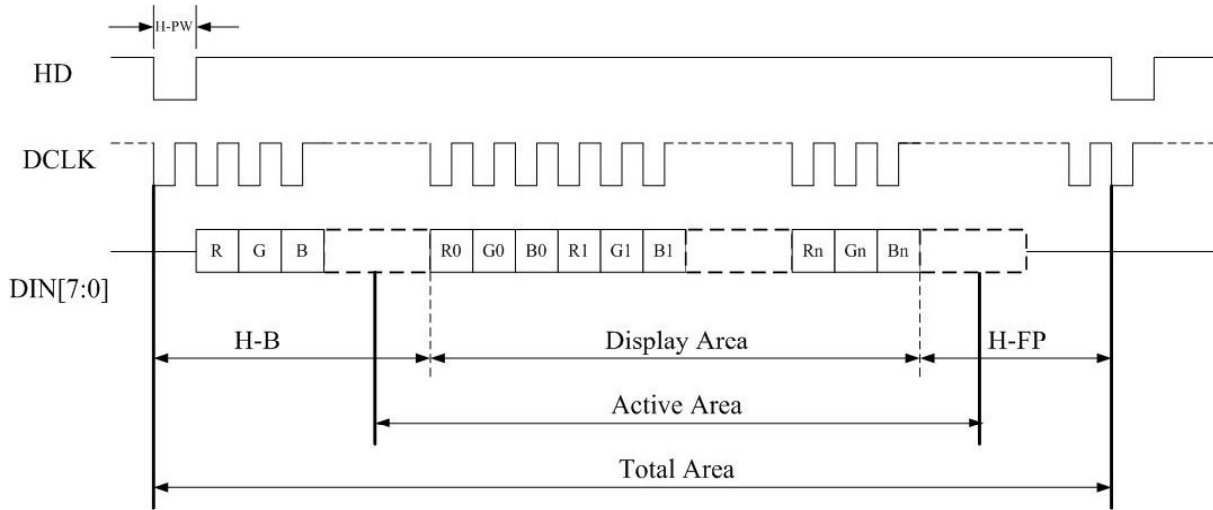
Ta=25°C

Item	Symbol	MIN	TYP	MAX	Unit	Remark
Forward Current	I _F	--	23	25	mA	Note 5-3
Forward Current Voltage	V _F	--	3.6	--	V	
Backlight Power Consumption	W _{BL}	--	83	--	mW	

Note 5-3: Backlight driving circuit is recommended as the fix current circuit.

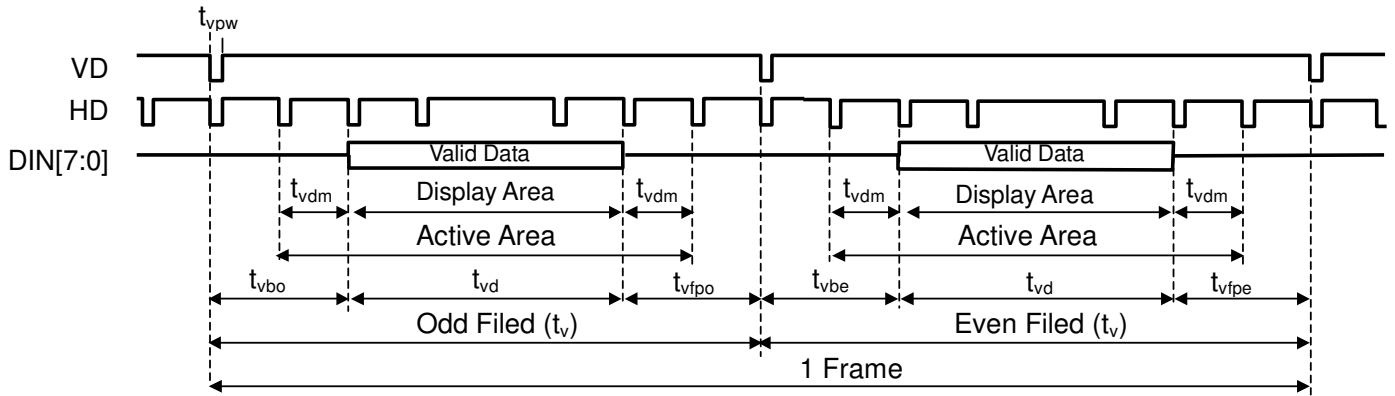
6. TIMING CHART

6.1 Through Mode: Horizontal

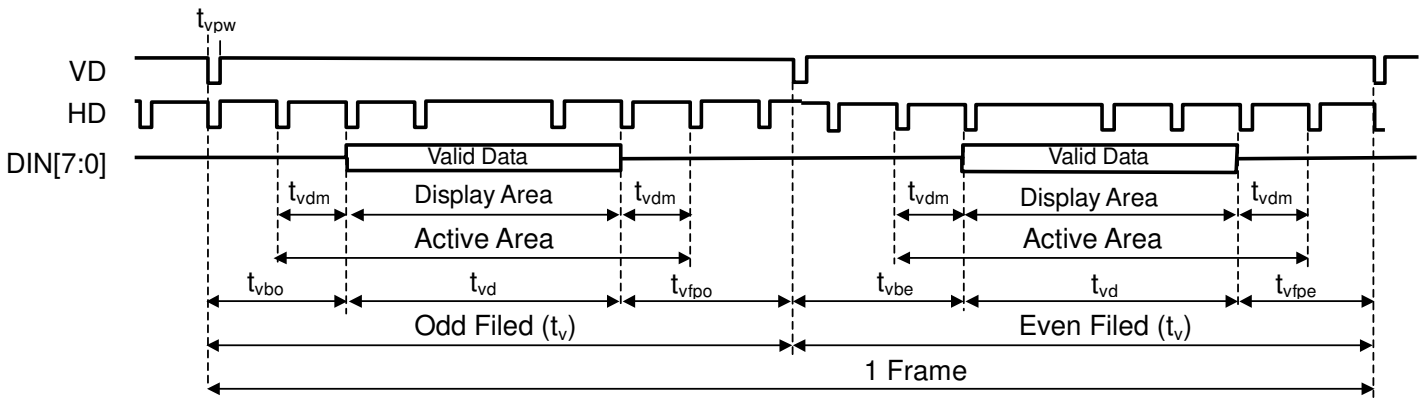


Item	Symbol	MIN	TYP	MAX	Unit
DCLK frequency	DCLK		10.36		MHz
Horizontal Display Active	Display Area	-	480	-	DCLK
Horizontal Total Time	Total Area	-	659	-	DCLK
HSYNC Pulse Width	H-PW	-	1	-	DCLK
Horizontal Back Porch	H-B	-	96	-	DCLK
Horizontal Front Porch	H-FP	-	83	-	DCLK

6.2 Through Mode: Vertical



Non-Interlace Mode



Interlace Mode

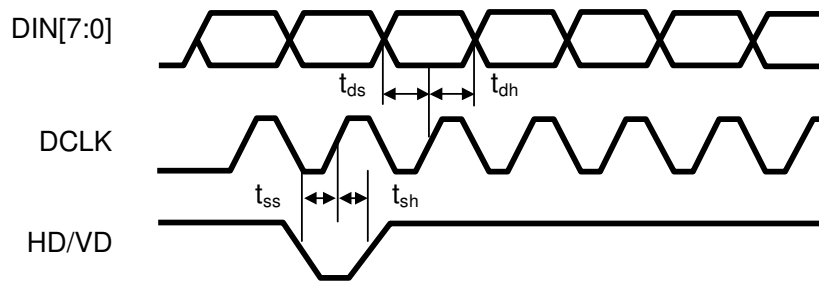
(1) Non-Interlace Mode

Item	Symbol	MIN	TYP	MAX	Unit	
Vertical Display Active	t_{vd}	-	240	-	Line	
Vertical Total Time	t_v	-	262	-	Line	
VSYSN Pulse Width	t_{vpw}	1	1	-	DCLK	
Vertical Back Porch	Odd Field	t_{vbo}	-	14	-	Line
	Even Field	t_{vbe}	-	14	-	Line
Vertical Front Porch	Odd Field	t_{vfpo}	-	8	-	Line
	Even Field	t_{vfpe}	-	8	-	Line
Vertical Dummy	t_{vdm}	-	0	-	Line	

(2) Interlace Mode

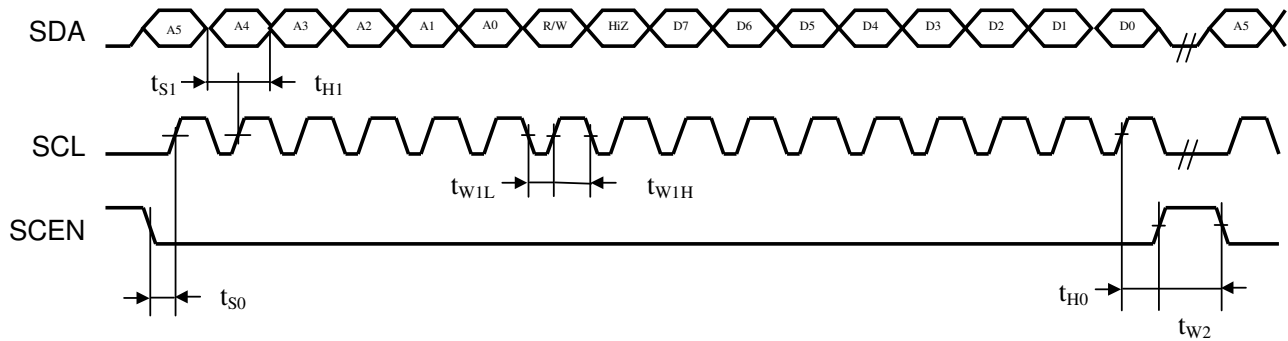
Item	Symbol	MIN	TYP	MAX	Unit	
Vertical Display Active	t_{vd}	-	240	-	Line	
Vertical Total Time	t_v	-	262.5	-	Line	
VSYNC Pulse Width	t_{vpw}	1	1	-	DCLK	
Vertical Back Porch	Odd Field	t_{vbo}	-	14	-	Line
	Even Field	t_{vbe}	-	14.5	-	Line
Vertical Front Porch	Odd Field	t_{vfpo}	-	8.5	-	Line
	Even Field	t_{vfpe}	-	8	-	Line
Vertical Dummy	t_{vdm}	-	0	-	Line	

6.3 Setup Time and Hold Time



Item	Symbol	MIN	TYP	MAX	Unit
DCLK Duty Ratio	-	40	-	60	%
Data Setup Time	t_{ds}	12	-	-	ns
Data Hold Time	t_{dh}	12	-	-	ns
Control Signal Setup Time	t_{ss}	12	-	-	ns
Control Signal Hold Time	t_{sh}	12	-	-	ns

6.4 Serial Interface Timing



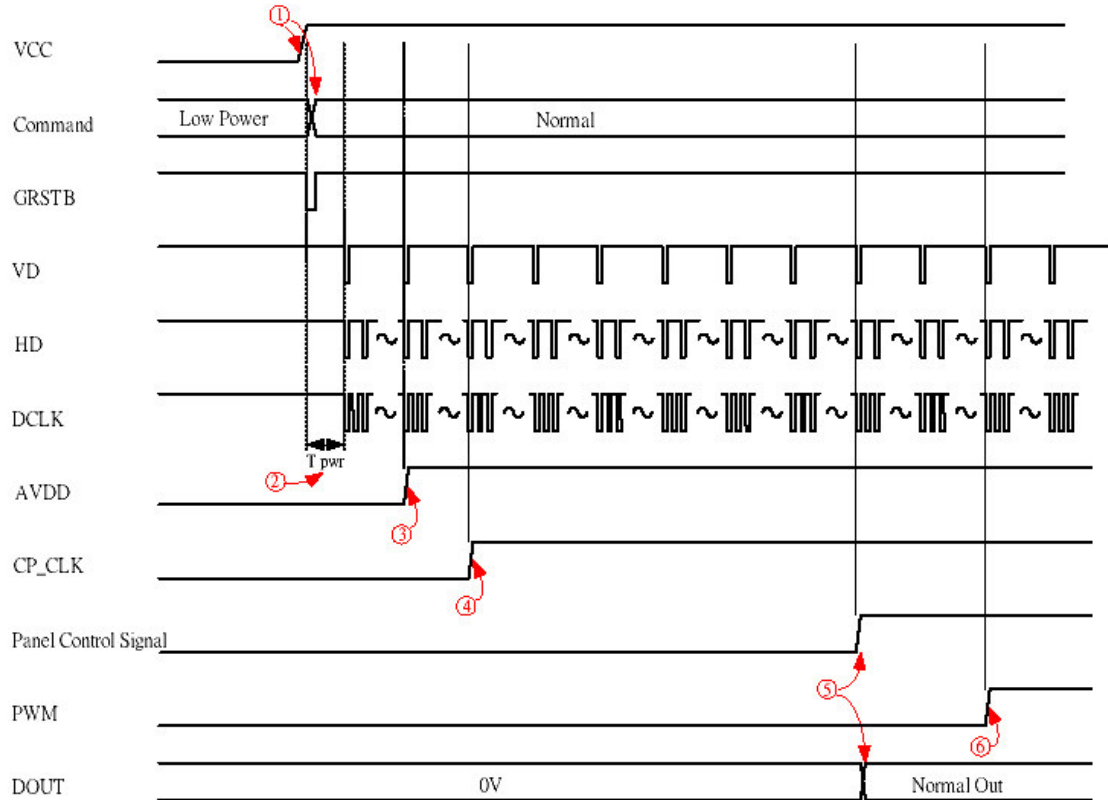
Parameter	Symbol	Condition	MIN	TYP	MAX	Unit
Data Setup Time	t_{S0}	SCEN to SCL	150	-	-	ns
	t_{S1}	SDA to SCL	150	-	-	ns
Data Hold Time	t_{H0}	SCEN to SCL	150	-	-	ns
	t_{H1}	SDA to SCL	150	-	-	ns
Pulse width	t_{W1L}	SCL pulse width	160	-	-	ns
	t_{W1H}	SCL pulse width	160	-	-	ns
	t_{W2}	SCEN pulse width	1.0	-	-	us
Clock Duty	-	SCL duty ratio	40	-	60	%

7. Power on/off sequence

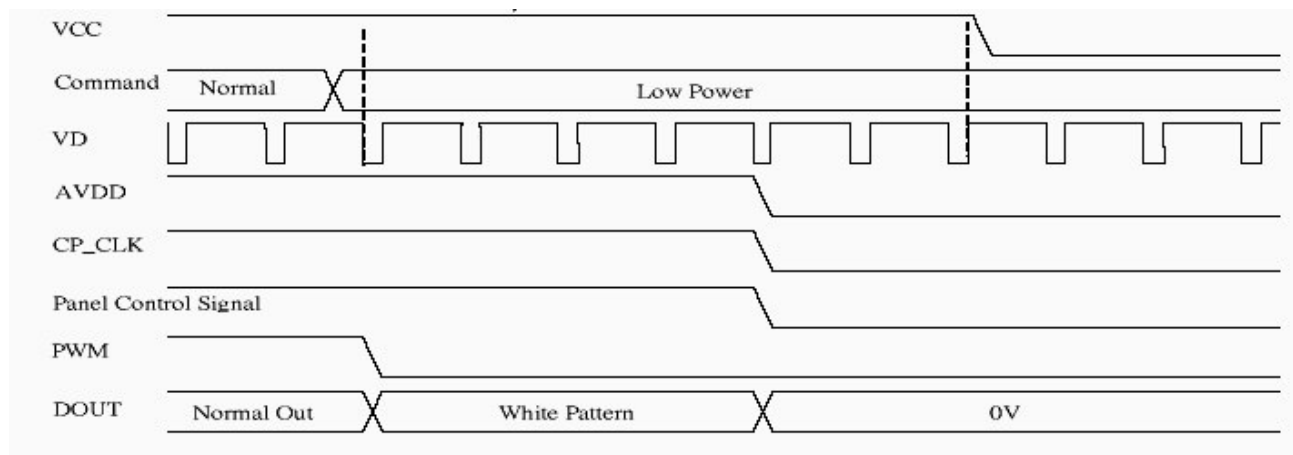
7.1 Power on to normal mode sequence

Power on (low power mode, global reset) to normal mode sequence

- Step1 : Wait VCC go stable and then send Normal command by 3 wire.
- Step2 : Before turn on VCC, the VD/HD/DCLK input signal must keep still until $T_{pwr}(2ms)$.
- Step3 : AVDD will start when second VD coming.
- Step4 : CP_CLK will start when third VD coming.
- Step5 : Panel Control Signal and Normal DOUT will start when ninth VD coming.
- Start6 : PWM control signal will start when eleventh VD coming.



7.2 Normal mode to power off sequence



OPTICAL CHARACTERISTICS

8.1 Optical Specification

Ta=25°C

Item	Symbol	Condition	MIN	TYP	MAX	Unit	Remarks	
Viewing Angles	$\theta 11$	CR \geq 10	30	40	-	Degree	Note 8-1	
	$\theta 12$		30	40	-			
	$\theta 21$		15	20	-			
	$\theta 22$		40	50	-			
Contrast Ratio	CR	$\theta = 0^\circ$	200	300	-		Note 8-2	
Response Time	Rising		Tr	-	TBD	TBD	ms	Note 8-3
	Falling		Tf	-	TBD	TBD		
Luminance (I _F =20mA)	L		-	100	-	cd/m ²	Note 8-4	
Chromaticity	White		x _w	0.26	0.31	0.36		Note 8-5
		y _w	0.29	0.34	0.39			

8.2 Basic Measure Conditions

(1) Driving voltage

VCC= 3 V

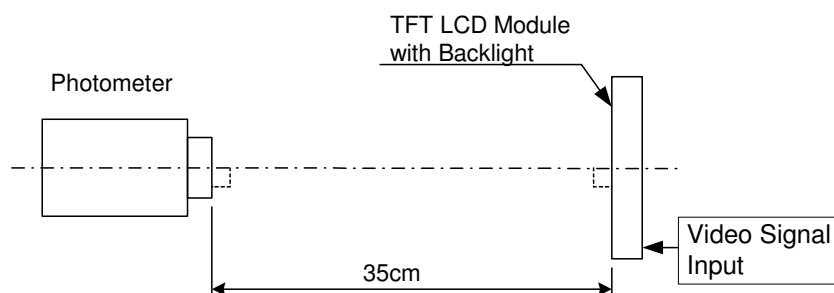
(2) Ambient Temperature: Ta=25°C

(3) Testing Point: Measure in the display center point and the test angle $\theta = 0^\circ$

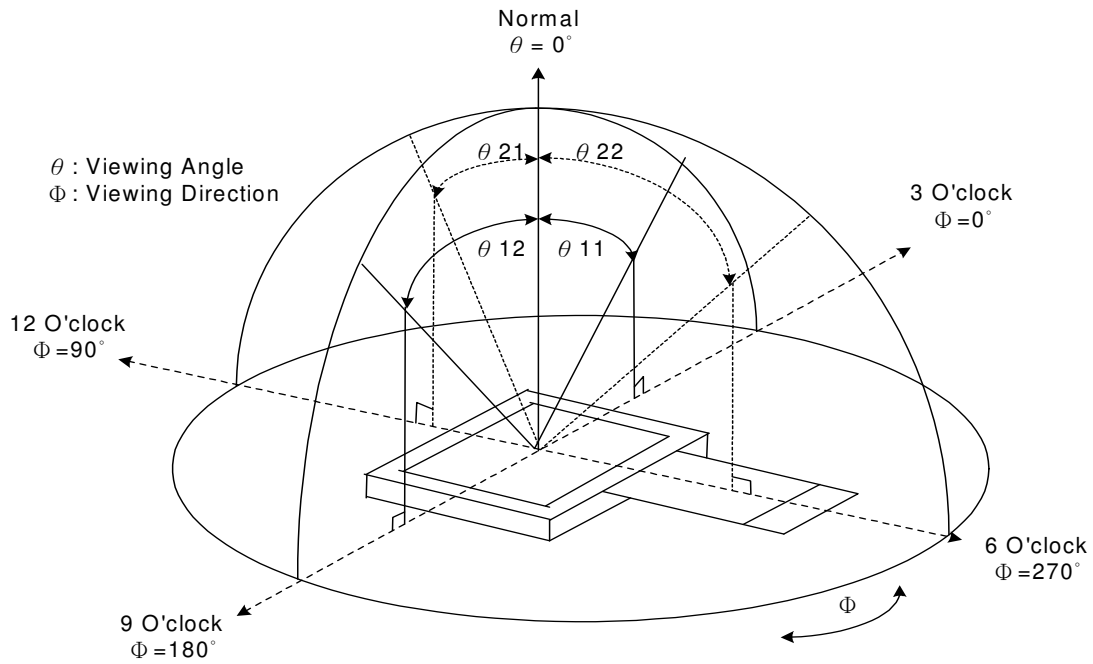
(4) LED Current: I_F=20mA.

(5) Testing Facility

Environmental illumination: \leq 1 Lux



Note 8-1: Viewing angle diagrams:

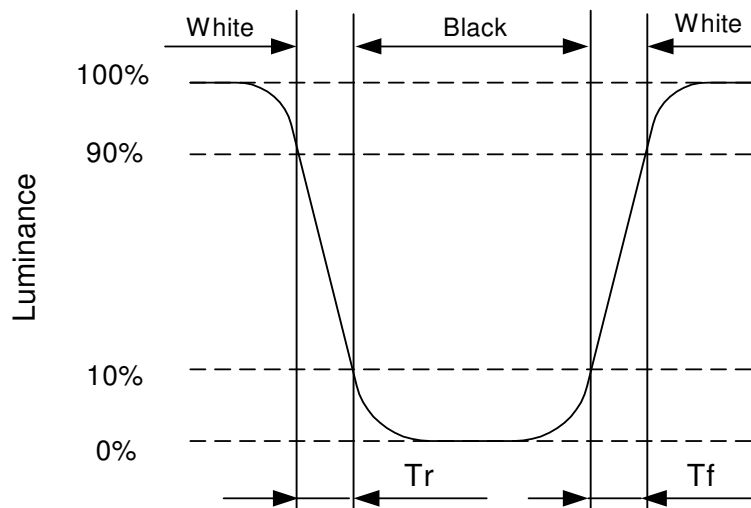


Note 8-2: Contrast Ratio:

Contrast ratio is measured in optimum common electrode voltage.

$$CR = \frac{\text{Luminance with white image}}{\text{Luminance with black image}}$$

Note 8-3: Definition of response time:



Note 8-4: Luminance:

Test Point: Display Center

Note 8-5: Chromaticity: The same test condition as Note 8-4.

8. RELIABILITY

TBD

9. HANDLING CAUTIONS

10.1 ESD (Electrical Static Discharge) Strategy

ESD will cause serious damage of the panel, ESD strategy is very important in handling. Following items are the recommend ESD strategy

- (1) In handling LCD panel, please wear non-charged material gloves. And the conduction ring connect wrist to the earth and the conducting shoes to the earth is necessary.
- (2) The machine and working table for the panel should have ESD prohibition strategy.
- (3) In handling the panel, ionize flowing decrease the charge in the environment is necessary.
- (4) In the process of assembly the module, shield case should connect to the ground.

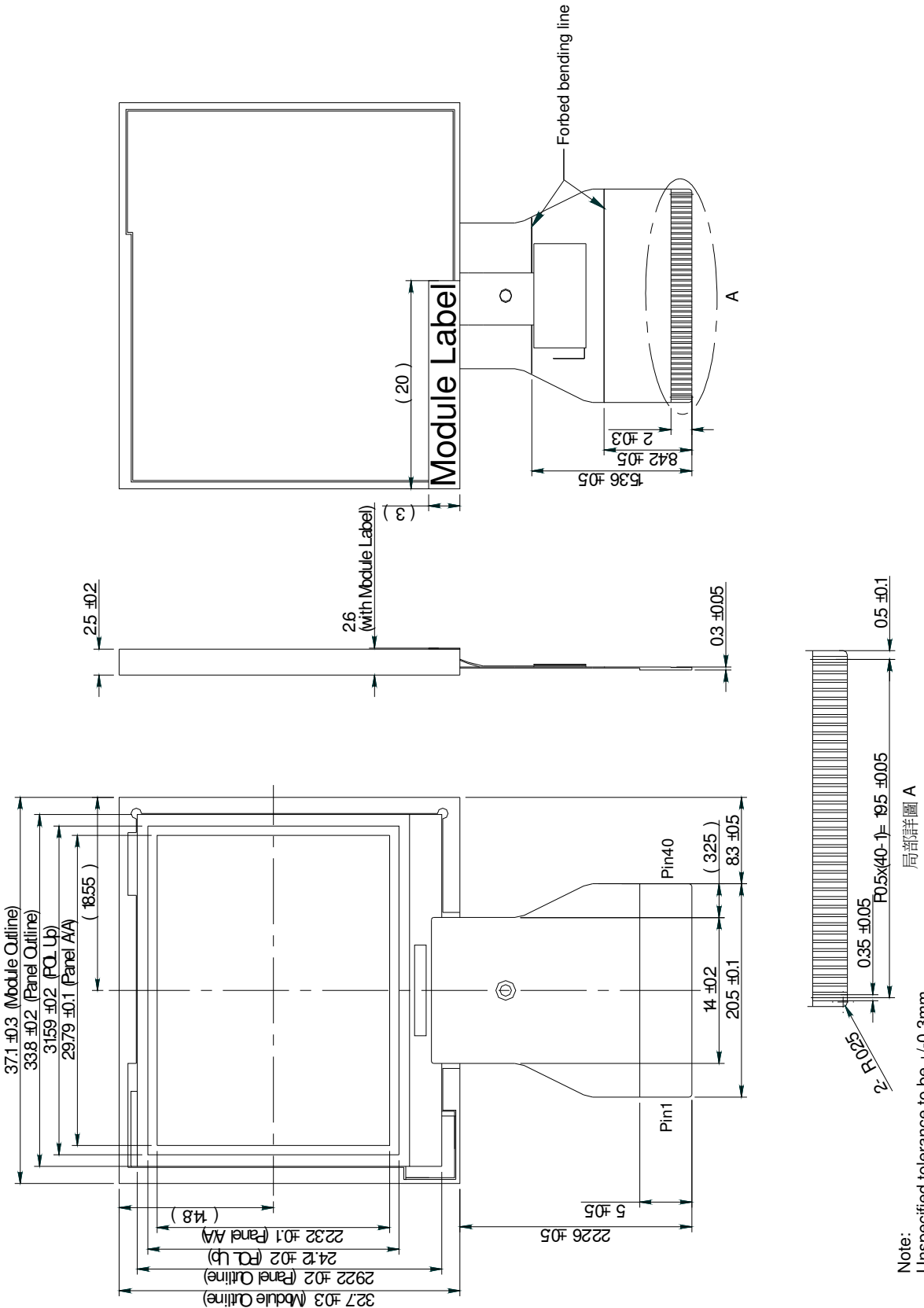
10.2 Environment

- (1) Working environment of the panel should in the clean room.
- (2) The front polarizer is easy damaged, handle it carefully and do not scratch it by sharp material.
- (3) Panel has polarizer protective film in the surface please remove the protection film of polarizer slowly with ionized air to prevent the electrostatic discharge.

10.3 Others

- (1) Turn off the power supply before connecting and disconnecting signal input cable.
- (2) The connection area of FPC and panel is very weak, do not handle panel only by FPC or bend FPC.
- (3) Water drop on the surface or condensation as panel power on will corrode panel electrode.
- (4) As the packing bag open, watch out the environment of the panel storage. High temperature and high humidity environment is prohibited.
- (5) When the TFT LCD module is broken, please watch out whether liquid crystal leaks out or not. If your hand touches liquid crystal, wash your hand cleanly by water and soap as soon as possible.

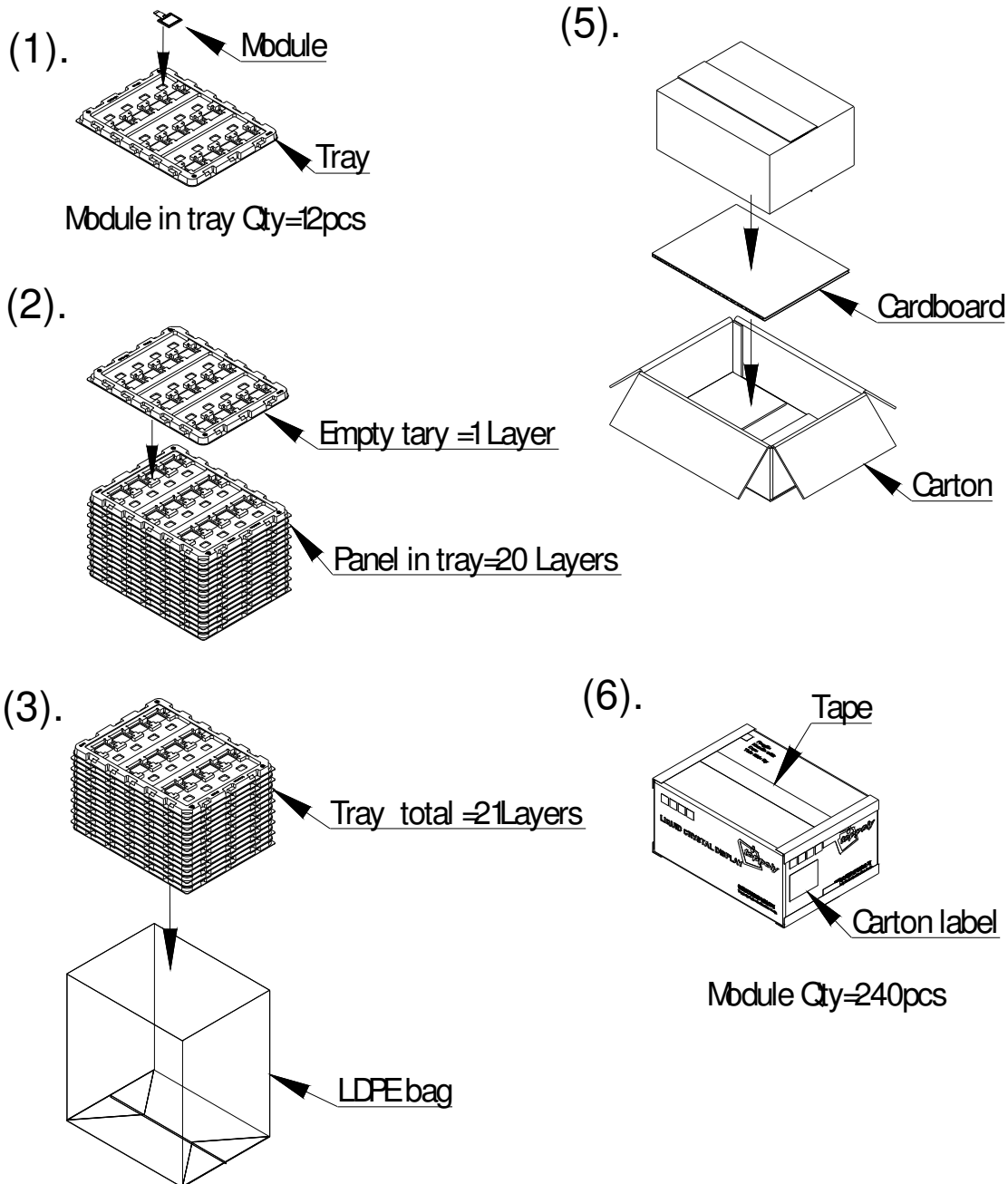
11. MECHANICAL DRAWING



Note: Unspecified tolerance to be +/-0.3mm

局部詳圖 A

12. Packing Drawing



1.5" module (TD015THEB2) delivery packing method

- (1). Module packed into tray cavity (with Module display face down).
- (2). Tray stacking with 20 layers and with 1 empty tray above the stacking tray unit.
2pcs desiccant put above the empty tray
- (3). Stacking tray unit put into the LDPE bag and fix by adhesive tape.
- (4). Put 1pc cardboard inside the carton bottom, and then pack the package unit into the carton.
- (5). Carton tapping with adhesive tape.