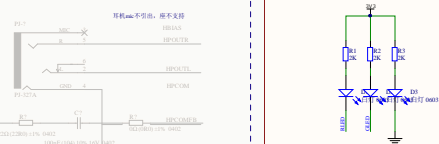
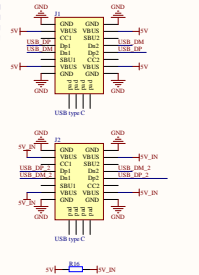


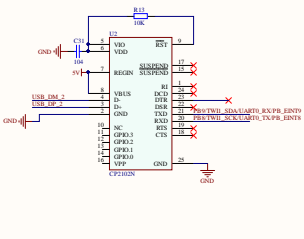
### 耳机部分



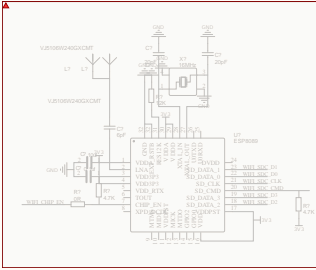
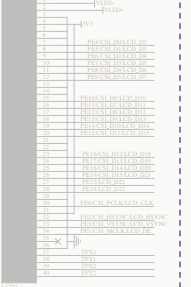
### USB切换部分



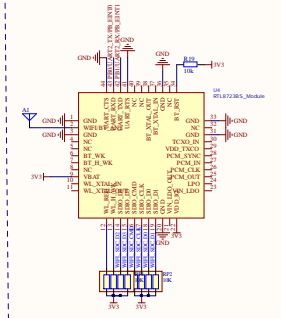
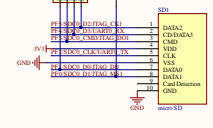
### 串口部分



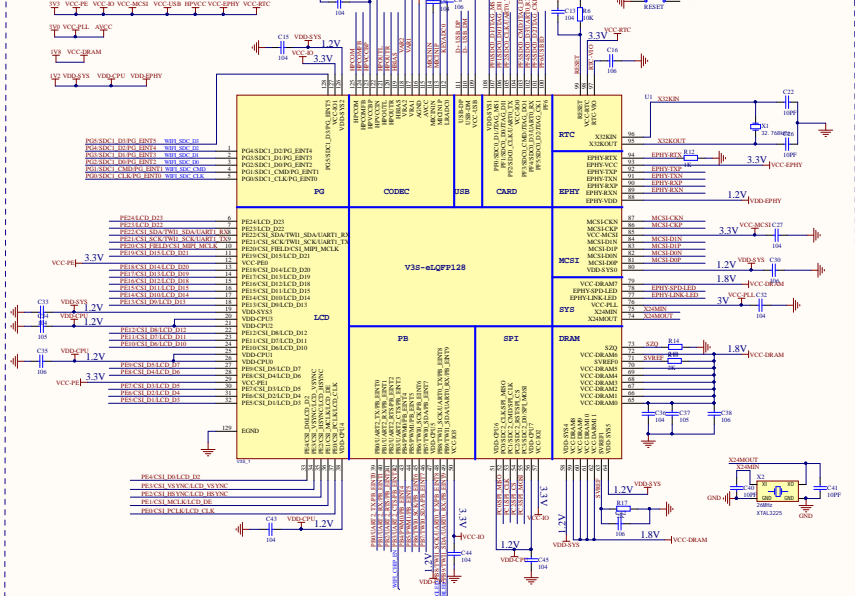
### LCD部分



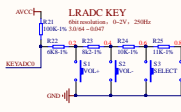
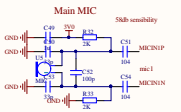
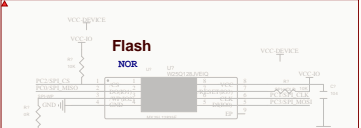
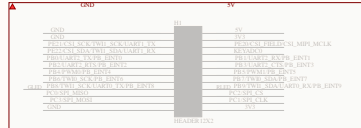
### TF卡部分



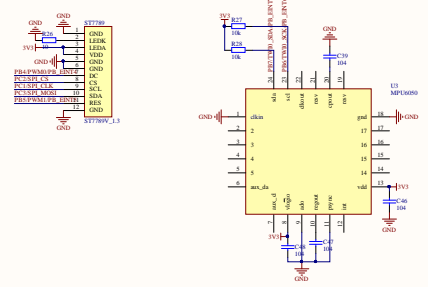
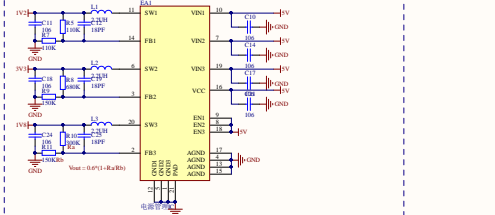
### CPU部分



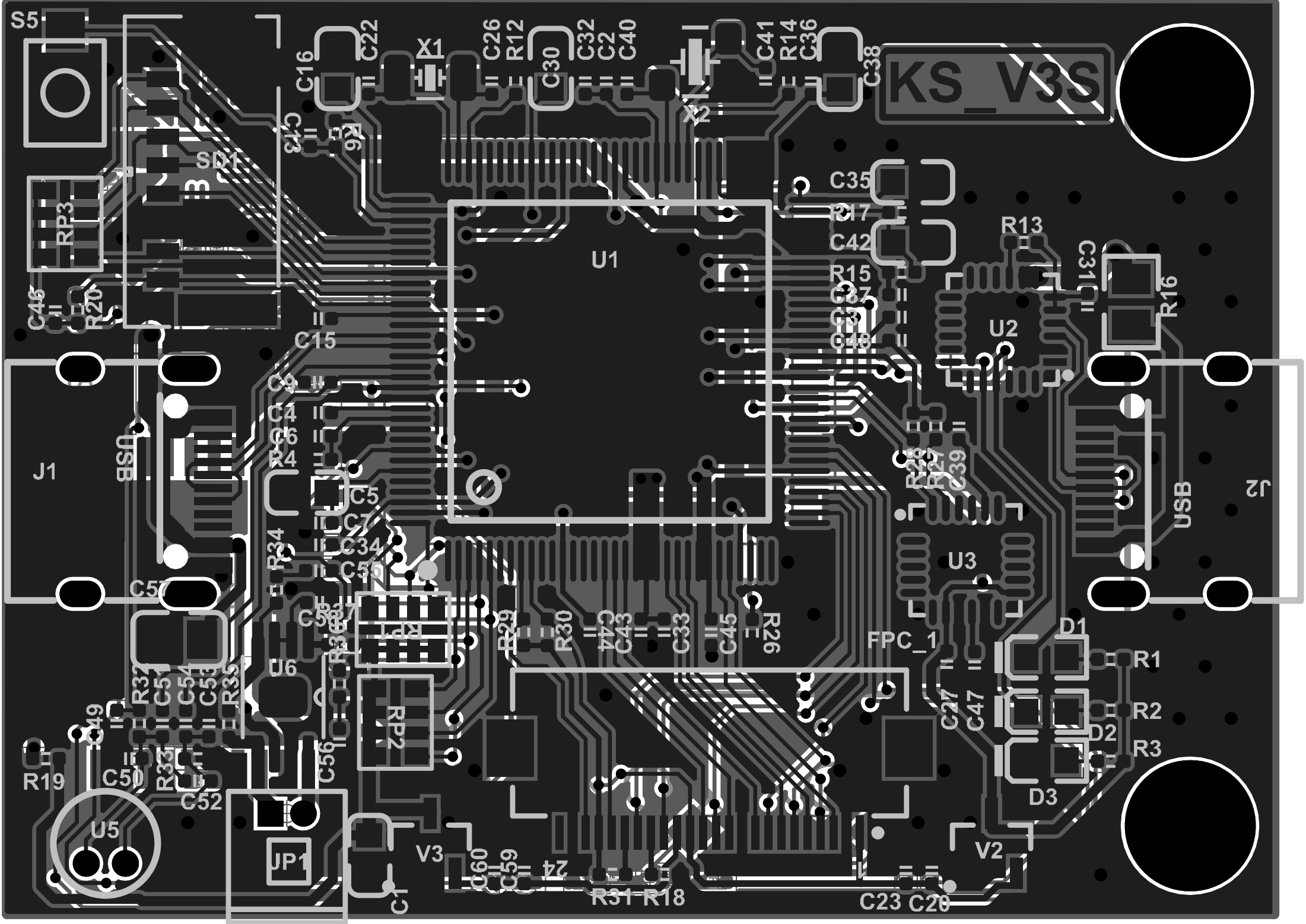
### 插针部分



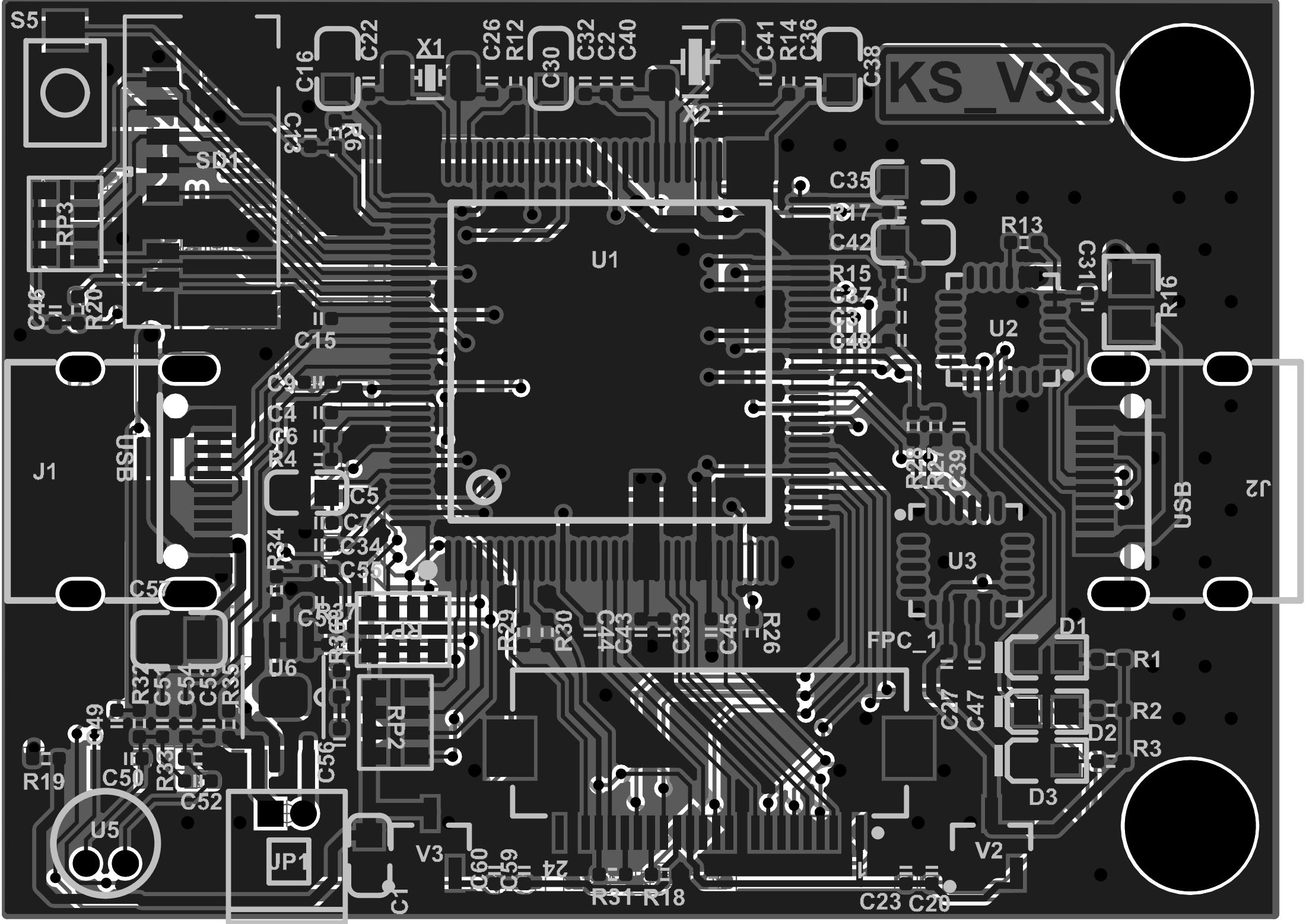
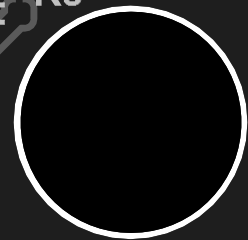
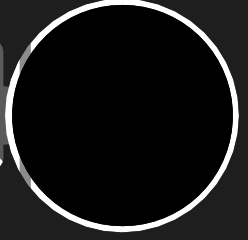
### 电源部分



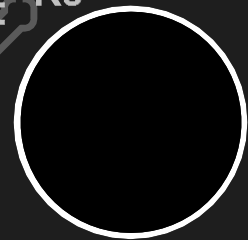
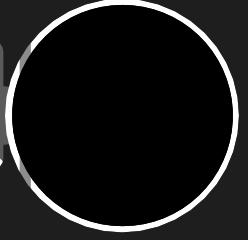
Rev	Number	Revision
1.0	2024-12-11	1.0
1.1	2024-12-11	1.1



KS\_V3S



KS\_V3S



Comment	Description	Designator	Footprint	LibRef	Quantity
IPX_SMA	IPX	A1	IPX_SMA	IPX_SMA	1
104	[NoValue], SMD-CAP	C1, C2, C7, C9, C13, C15, C20, C27, C28, C31, C32, C33, C36, C39, C43, C44, C45, C46, C47, C48, C51, C54, C59	CAP_0402	CAP	23
105		C3, C4, C34, C37	CAP_0402	CAP	4
106		C5, C30, C35, C38, C42	0603_C	CAP	5
106		C6, C8, C11, C14, C17, C18, C21, C23, C24, C29, C60	CAP_0402	CAP	11
106		C10, C16	0805_C	CAP	2
18PF		C12, C19, C25	CAP_0402	CAP	3
10PF		C22, C26, C40, C41	CAP_0402	CAP	4
1u	SMD-CAP	C49	CAP_0402	CAP	1
33p	SMD-CAP	C50, C53	CAP_0402	CAP	2
100p	SMD-CAP	C52	CAP_0402	CAP	1
330nF	Capacitor	C55	CAP_0402	电容-0603	1
0.1uF	Capacitor	C56	CAP_0402	电容-0402	1
10uF	Capacitor	C57	0805_C	电容-0402	1
1uF	Capacitor	C58	CAP_0402	电容-0402	1
白灯 0603	发光二极管	D1, D2, D3	0603_LED_S1	0603 白灯	3
电源管理IC		EA1	QFN20 3x3_M	EA3036	1
FPC_24		FPC_1	FPC_24	FPC_24	1
USB type C		J1, J2	USB Type-C-16Pin_A	USB_C	2
HDR-1X2	2P接插件	JP1	MX 1.25-WI-2P	Header 2	1
2.2UH	电感	L1, L2, L3	2520-L	L1	3
Res2	Resistor	R1, R2, R3, R4, R5, R6, R7, R8, R9, R10, R11, R12, R14, R15, R17, R18, R19, R20, R26, R27, R28, R29, R30, R31, R32, R33	RES_0402	Res2	26
10K	普通电阻	R13	RES_0402	RES	1
1A保险丝	Resistor	R16	LC-0805_R	Res2	1
100K-1%		R21	RES_0402	R	1
6K8-1%		R22	RES_0402	R	1
8K2-1%		R23	RES_0402	R	1
10K-1%		R24	RES_0402	R	1
11K-1%		R25	RES_0402	R	1
20K	Resistor	R34	RES_0402	电阻-0402	1
75K	Resistor	R35	RES_0402	电阻-0402	1
22R	Resistor	R36	RES_0402	电阻-0402	1
10K		RP1, RP2, RP3	RCA-8P4R-0603	224	3
VOL+	Switch	S1	KEY_1	SW-PB	1
VOL-	Switch	S2	KEY_1	SW-PB	1
SELECT	Switch	S3	KEY_1	SW-PB	1
START	Switch	S4	KEY_1	SW-PB	1
RESET	Switch	S5	KEY_1	SW-PB	1
micro SD		SD1	TF卡座 短体 molex47309-2851_MOL	micro SD	1
ST7789V_1.3		ST7789	ST7789V_12Pin	ST7789V_1.3	1
V3S_1		U1	LQFP129 14x14_N	V3S_1	1
CP2102N		U2	QFN24 4x4_N	CP2104	1
MPU6050		U3	QFN24 4x4_M	MPU6050	1
RTL8723BS_Module		U4	R8723BS	RTL8723BS_Module	1
MIC		U5	MIC-0416	MIC	1
LM4871		U6	MSOP-8	LM4871	1
XC6206 3V0	低压差线性稳压芯片	V1	SOT23-3N	XC6206P332MR	1
XC6206 2V8	低压差线性稳压芯片	V2	SOT23-3N	XC6206P332MR	1
XC6206 1V5	低压差线性稳压芯片	V3	SOT23-3N	XC6206P332MR	1
32.768KHz	Crystal Oscillator	X1	XT_3215_2	XTAL_32.768k	1
26MHz	Crystal Oscillator	X2	XT_3225_4	XTAL_3225_4P	1